

The hamster, defined.

hamster (hām'stēr), *n.* (Stand back Funk & Wagnalls, from here on it's a whole new word-game.) **1.** This hamster is clean, the cleanest available anywhere. Thanks to our employment of innovative techniques and use of isolator systems, *he's free of all hamsterviruses.*

2. Consider what went into this exceptional animal: **(a)** After testing provided by our parent company Charles River Breeding Laboratories and reaffirmed by an outside microbiological laboratory, we established a colony free of all known hamster viruses.

(b) Prior to their introduction into isolators, chemotherapeutic and germicidal agents further reduced the risk of contaminants. **(c)** Then the animals were associated with beneficial flora. **3.** Our colony now lives in total isolation. A broad gene pool is assured through caesarean-derived litters foster suckled on this isolator nucleus. Barrier conditions are maintained through a controlled environment, sterile bedding and pasteurized feed. Clinical signs consistent with wet-tail or other problems are gone.

We could go on. And we will with our possible dream of breeding a germfree hamster. Meanwhile, without question, our definition is improving. Contact us for more information, we'd like a word with you on the subject.



Mesocricetus auratus — hamster

Lakeview Hamster Colony

P.O. Box 85, Newfield, New Jersey 08344 (609) 696-1000
A Charles River Company

Eliminate 90% of the manual effort in RIA. Our automated pipetting system does it.

**EXTRA! EXTRA!
THE APS NOW
HAS A SLURRY
DISPENSER...
WIDENS RIA
UTILITY—SEE
IT AT FASEB**



When you do radioimmunoassays, manual micro pipetting is 90% of the work. That's where our Micromedic Automated Pipetting Station comes in. This is a system designed to automate precision analytical work that requires repetitive dilutions and reagent additions, including work in the ultramicro range.

To get fast, reproducible pipetting—automatically—contact Micromedic Systems. We'll show you how.

Call (215) 592-2401.



**MICROMEDIC
SYSTEMS, INC.**

MICROMEDIC SYSTEMS, INC.,
Rohm and Haas Bldg., Phila., Pa. 19105

☐ Send descriptive literature.

☐ Have your representative call. Tel. _____

Name _____ Title _____

Organization _____

Street _____

City _____ State _____ Zip _____

New Phadebas[®] IgE Test

makes IgE testing simpler, faster and more
convenient than ever before possible

IgE

Radioimmunoassay

based on the solid phase Sephadex[®] principle

Complete reagents

sufficient for 50 determinations

Fast results

overnight incubation at room temperature

Wide range

measures serum levels 10 to 4000 U/ml

Pharmacia Laboratories Inc.

800 Centennial Avenue, Piscataway, New Jersey 08854

Please send me further information on the following Phadebas tests

☐ B₁₂ ☐ IgE ☐ Insulin ☐ Amylase

Name and Title

Affiliation

Address

City

State

Zip

PHARMACIA LABORATORIES INC.
800 Centennial Avenue,
Piscataway, N.J. 08854

Pharmacia (Canada) Ltd.,
110 Place Crémazie,
Suite 412, Montreal 351, P.Q.



Pharmacia

Our heart's
in the right place.

Behind our reputation.

When Cordis Corporation was founded in 1959, we began to build a well-respected professional reputation. As an integral part of the medical field, we realize that the quality of a Cordis product can often make the difference between life and death.

Cordis cardiac pacers, angiographic equipment, and artificial kidneys have been sustaining and improving the lives of scores of patients. Throughout the world.

And now, the Cordis principle of uncompromising quality is being applied to an exciting new line of immunological and biological products. Research aids like Cordis Complement Components and Hollow Fiber Devices. Specialized diagnostic reagents like the Hepatitis Associated Antigen Test System. Precision instruments like Cordis Diluters and Immunodiffusion Cameras. All produced under rigid quality control standards. To give you the reliability you've come to expect from Cordis.

Cordis 1973. A closely-knit organization of professionals. Dedicated to precision, quality, and perfection.

At Cordis, we're proud of our reputation. We think we have a right to be.

Absolute reliability.
It's the heart of our business.

cordis.



Cordis Complement Components.

Rely on Cordis to supply the reagents needed to measure complement activity in normal and disease processes by hemolytic assays.

Reagents include nine isolated, functionally-pure components from both human and guinea pig serum; stable cellular intermediates; preserved sheep blood; antibodies against sheep red cells; guinea pig complement; cobra venom factor; and all essential buffers.

Test sets, also available, include all reagents needed for hemolytic assays of individual components and whole complement. Instructional sets provide reagents for two tube or twenty microtiter plate assays. Clinical laboratory sets, enough for ten tube or 100 microtiter plate assays.

For more information or to place your order, write or call collect.

cordis.

Cordis Laboratories/P.O. Box 428 Dept. LA
Miami, Florida 33137/Tel. (305) 634-5411
Ext. 431 for information or Ext. 306 to place an order



HAVE YOU CONSIDERED THE SERVICES OF A SPECIALIST?

In the field of Immunology, Kalvert Personnel is the recognized specialist servicing both the company and the applicant. Through special screening and evaluation techniques, we have developed a leading reputation among the

immunologists... and the results are most gratifying to the companies we service and the applicants we recommend.

A sampling of our nationwide openings.

DIRECTOR OF RESEARCH IMMUNOLOGY—Develop methodology for automated immunological instruments. Major life science company, newly created position. Salary Open.

DIRECTOR RADIOIMMUNOASSAYS—Major diagnostic company. Newly created department. Ability to communicate with marketing, production and sales personnel. Salary \$25,000.

SR. RESEARCH SCIENTIST—Plan/initiate/develop radioimmunoassays, to hormones, peptides, steroids and etc. Salary \$20,000.

RESEARCH SCIENTISTS—Recent Ph.D. Nationwide positions in the following areas. Tumor immunology/cellular immunology/serology/viral immunology/transplantation immunology/hepatitis studies/immunosuppressant studies, etc. Salary Open.

MANAGER OF TECHNICAL SERVICES—Ph.D. immunology or microbiology. Preparation and dissemination of product and technical information and literature. Process and monitor all product complaints. Salary \$18,000.

GROUP LEADER—Immunopathology. Salary \$20,000.

All fees and expenses paid by company.

Call Leonard Kalvert • (212) 564-2244

Or send resume, in confidence, to:



KALVERT
PERSONNEL SERVICE Inc.

147 West 42nd Street, New York, N.Y. 10036
(212) 564-2244

THE COMPUTERIZED DICTIONARY

It's the best
because it best defines
the medicine that you practice

The new edition contains:

- 7,199 significant new vocabulary entries
- 24,877 important editorial revisions
- excellent color plates and illustrations
- an alphabetical index to subentries
- appendices, tables, eponyms, and synonyms
- a special section to help you get the most from your dictionary

Beautifully bound and thumb-indexed for easy use, the new *Stedman's* will be the most valuable addition to your library in years.

1972/1,620 pages/\$18.50



THE WILLIAMS AND WILKINS COMPANY

428 E. Preston Street

Baltimore, Maryland 21202

From test tubes to answers! Nuclear-Chicago offers you the only complete on-line radioimmunoassay systems.

Only our automatic-instrument systems will take your RIA/CPB tests from samples to final data.

Nuclear-Chicago Liquid Scintillation and Automatic Gamma Counters offer unprecedented speed and convenience in data-reduction. Both our beta and gamma spectrometer systems are linked with our RIA/CPB Data Processor. These systems analyze samples and print out the results immediately. Complete data (including count rate, normalized percent bound, standard deviation, dose, corrected dose, and confidence range) are printed for each sample group, giving you meaningful and useful results. All you do is load your standards and samples, establish assay protocol with the processor, start the system, and retrieve the final, printed readout. Our systems do all the rest!

Right now, some 20 RIA tests are routinely performed in clinical medicine. Many more tests have

been developed in the research lab, and before long many of these will also become common clinical procedures. Can you read the handwriting on the wall?

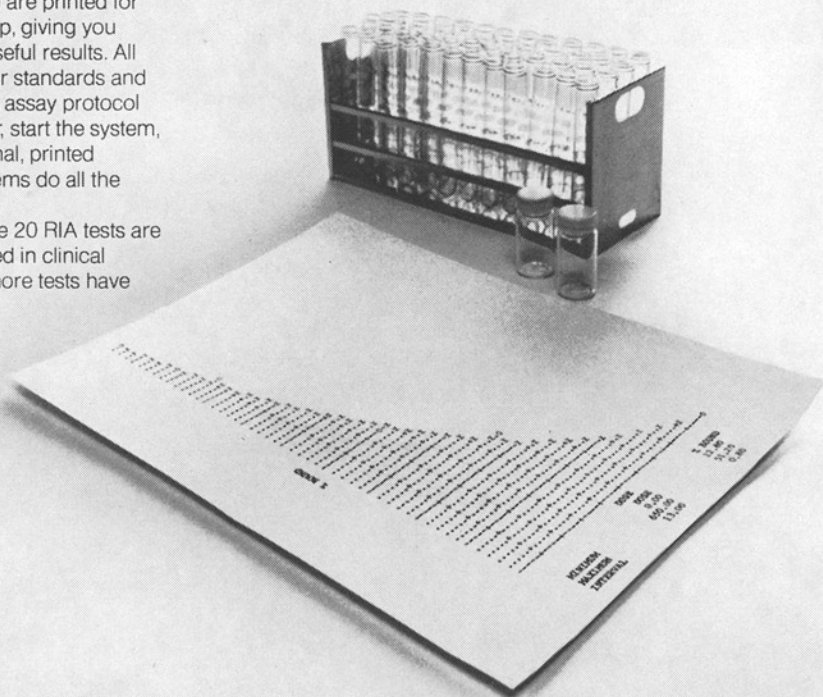
It plainly spells "Nuclear-Chicago" to people who plan ahead. Write for our free brochure, RIA/CPB Data Systems.



NUCLEAR-CHICAGO

A SUBSIDIARY OF G. D. SEARLE & CO.

2000 Nuclear Drive, Des Plaines, Illinois 60018
Wiegerbruinlaan 75, Uithoorn, The Netherlands



FULL STRENGTH

FLUORESCEIN CONJUGATES

Prepared from IgG Fractions (Isolated by Chromatography)

Product Chromatographed After Conjugation

Low Fluorescein/Protein Ratio

Fluorescein Conjugated Anti-Human Albumin
Fluorescein Conjugated Anti-Human Alpha₂ Macroglobulin
Fluorescein Conjugated Anti-Human Bence Jones Kappa
Fluorescein Conjugated Anti-Human Bence Jones Lambda
Fluorescein Conjugated Anti-Human Beta Lipoprotein
Fluorescein Conjugated Anti-Human B1C (C3)
Fluorescein Conjugated Anti-Human Fibrinogen
Fluorescein Conjugated Anti-Human IgA (Heavy Chain Specific)
Fluorescein Conjugated Anti-Human IgD
Fluorescein Conjugated Anti-Human IgE
Fluorescein Conjugated Anti-Human IgG (Heavy Chain Specific)
Fluorescein Conjugated Anti-Human IgM (Heavy Chain Specific)
Fluorescein Conjugated Anti-Human Immunoglobulins
(IgA + IgG + IgM) (Heavy & Light Chain)
Fluorescein Conjugated Anti-Human Myoglobin
Fluorescein Conjugated Anti-Human Serum
Fluorescein Conjugated Anti-Human Transferrin

Fluorescein Conjugated Anti-Dog Gamma Globulin
Fluorescein Conjugated Anti-Goat Gamma Globulin
Fluorescein Conjugated Anti-Guinea Pig Gamma Globulin
Fluorescein Conjugated Anti-Mouse Gamma Globulin
Fluorescein Conjugated Anti-Rabbit Gamma Globulin
Fluorescein Conjugated Anti-Rat Gamma Globulin

Specialists in Fluorescein, Rhodamine, Ferritin and Peroxidase Conjugations.



cappel laboratories, inc.

DOWNINGTOWN, PA. 19335, U.S.A.

phone: (215) 269-0275 (215) 269-0500

TLG-a new technique!



Thin-layer gel filtration with the Pharmacia TLG-apparatus for rapid separations with microquantities.

TLG is an analytical technique for separation of proteins, peptides, carbohydrates, hormones, etc. It is especially suitable for molecular weight determination, clinical analysis of serum, cerebrospinal fluid, etc. and for choosing gel type prior to column experiments.

The TLG-apparatus has been specially designed with flexibility of operation in mind.

- **TWO PLATE SIZES**
Two chromatographic plates 20x20 cm, with one or different gel types, or one 20x40 cm can be run.
- **SAMPLE MULTIPLICITY**
Up to 30 samples (on two plates) can be run simultaneously.
- **VARIABLE LAYER THICKNESS**
TLG-spreader, included with each TLG-apparatus, enables layers 0.4, 0.6, 0.8, 1.0 mm to be made simply and quickly.
- **NEW CHAMBER DESIGN**
Special TLG-chamber keeps conditions constant during equilibration, sample application and development.
- **EASY SAMPLE APPLICATION**
TLG-chamber design allows sample application without disruption of chamber equilibrium.
- **SEPHADEX SUPERFINE**
Special Superfine grades of Sephadex G-50 to G-200 available.
- **SMALL SAMPLES**
Sample volumes in 1–10 μ l range may contain as little as 10 μ g substance.
- **VARIABLE DEVELOPMENT ANGLE**
Angles from 10°–45° with 5° intervals for descending development at different speeds.
- **PERMANENT RECORDS**
Permanent records of results obtained simply by paper replica technique.

TLG-apparatus, Sephadex® G-types and detailed handbook of TLG technique are available from:

Pharmacia Fine Chemicals
800 Centennial Avenue
PISCATAWAY, New Jersey 08854
Phone (201) 469-1222



Pharmacia (Canada) Ltd. 110 Place Crémazie, Suite 412, Montreal 11, P. Q.
(Inquiries outside U.S.A. and Canada should be directed to PHARMACIA FINE CHEMICALS, Uppsala, Sweden.)

PROGRESS IN CLINICAL IMMUNOLOGY

Volume I

Edited by Robert S. Schwartz, M.D.

Stressing both the practical and conceptual advances in the field of immunology, this first volume in a new series gathers the work of international authorities, focusing on the root mechanisms of immunological diseases.

The most recent and important advances in the field—etiologic agents of immunologic diseases; recent advances in immunoglobulins, including monoclonal gammopathies, subgroups of immunoglobulins, and the clinical significance of IgE; immunologic aspects of liver disease, histocompatibility antigens as a factor in susceptibility to certain diseases—are covered.

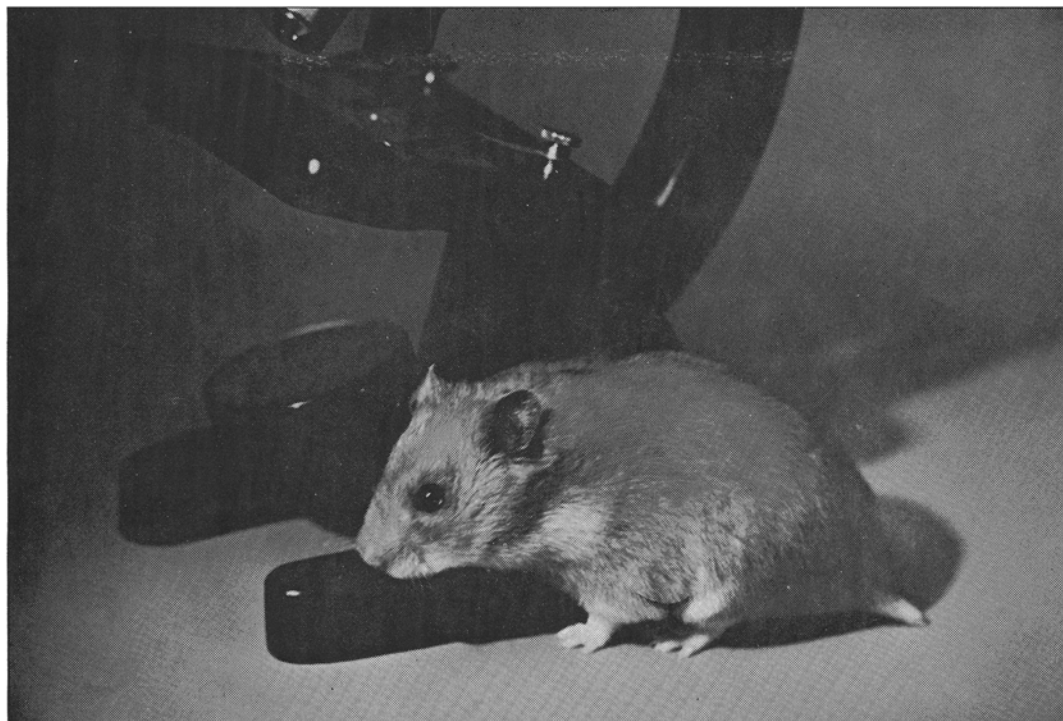
Designed as an up-to-date, in-depth review of progress, this volume will be indispensable to internists, students, allergists, pathologists, immunologists, and hematologists.

August 1972 about 250 pp. 42 illus.
about \$14.00



Grune & Stratton

111 Fifth Avenue, New York, N.Y. 10003



**The first commercially available
isolator-derived
HAMSTER**

**is proudly announced by the leader in white rats
and other gnotobiotic laboratory animals.**

Through a process of treatment, caesarean section, foster suckling and isolator rearing a clean hamster has been produced. The unique characteristics of the golden hamster make this animal exceptionally well suited and valuable for certain types of biomedical research. Among such uses are: tumor growth in the cheek pouch, both homografts

and heterografts; tissue transplantation, dental caries, studies in virology and bacteriology, aging, hibernation, cardiovascular research, pharmacology and nutritional studies.

Call or write for more details on availability and prices of this important addition to the ARS/Sprague-Dawley line of top quality laboratory animals.

**ARS SPRAGUE
DAWLEY**

laboratory animal division of the Mogul Corp.

P. O. Box 4220, Madison, Wisconsin 53711 • Telephone: (608) 221-2211



NEW CONVENIENCE . . . NEW FLEXIBILITY . . . IN IMMUNODIFFUSION TESTING

Mix or match any combination of tests with the new Hyland Immuno-Plate Multi-Test Tray

With this new Multi-Test tray you can convert any four Immuno-Plates, six- or twelve-well, into one easily handled combination plate. It not only makes managing tests easier, but gives you a far freer hand in fitting the test system to your exact needs.

With the addition of the new plate for quantitation of IgG and albumin in cerebrospinal fluid, there are now thirteen tests available. This gives you greater flexibility with hundreds of ways to combine tests on a single tray.

Or you can combine four of the same Immuno-Plates to make one large 48-well plate.

Hyland gives you all these advantages, plus precision production controls. Wide-spaced wells, raised plate bottoms and color coding pro-

vide accurate readings. Numbered wells allow for positive identification. Short incubation periods and long expiration dates are an added plus.

You have a headstart because Hyland was the pioneer developer of immunological reagents. Compare Hyland to any other system, old or new. It has to be the system of choice for convenience, flexibility and economy.

Let us give you a hand. Call Hyland or talk to our representative.

Full instructions for use are included with each package.

At Hyland we do more . . . so you have less to do.

HYLAND

DIVISION TRAVENOL LABORATORIES, INC.
Costa Mesa, California 92626