

Bionetics does it for you.

Anti-Mouse T-Cell Reagents

New
GUINEA PIG COMPLEMENT
Pre-tested for optimal
performance in anti-theta
cytolytic procedures

plus

Fluorescein Conjugates of
Rabbit Anti-Mouse Brain, Adsorbed
IgG Fraction of Anti-theta
Mouse AKR Anti-C3H Ascites
Mock Mouse Anti-theta Ascites (Control)
Mouse AKR Anti-C3H Serum
Mock Mouse Anti-theta Serum (Control)
Rabbit Anti-Mouse Brain (C3H)—
Adsorbed and Unadsorbed
Rabbit Anti-Mouse Brain (BALB/c)—
Adsorbed and Unadsorbed

USES

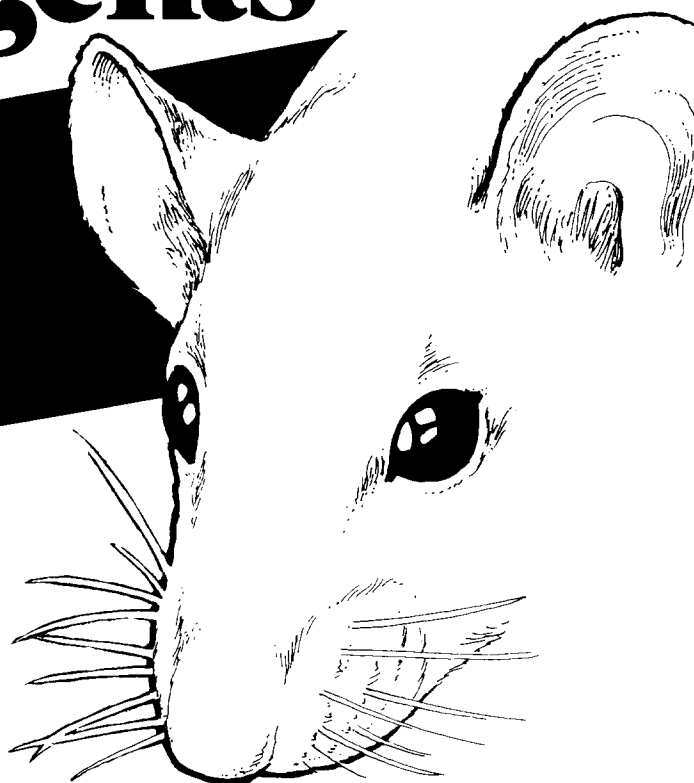
- Identification and quantitation of T-cells by Direct and/or Indirect FA methods.
- Investigations concerning the role of mouse T-cells in cellular immunity
- Studies of anti-tumor, anti-viral, or anti-bacterial immunity where identification or elimination of T-cells is required.

CHARACTERIZATION

Each lot of anti-theta is precisely characterized by:

- Specific cytolytic activity
- Effect on mitogenic response

These reagents are for research use only and are not for use in humans, nor for diagnostic or therapeutic purposes.



Write for Technical Data Sheet to:



BIONETICS
Laboratory Products

5516 Nicholson Lane, Kensington, Maryland 20795/Telephone (301) 881-1557

For the Mouse Immunologist

from CEDARLANE

LOW-TOX-M RABBIT COMPLEMENT

FOR USE WITH MOUSE LYMPHOCYTES

- Low toxicity to mouse lymphocytes
- High complement activity
- Designed for use with cytotoxic antisera to mouse lymphocytes

CL 3051 5 x 1 ml, lyophilized \$30.00

ANTI-MOUSE T-CELL SERUM

RABBIT ANTI-MOUSE BRAIN ASSOCIATED THY-1 ANTISERUM

- Strongly cytotoxic to thymocytes and peripheral T-lymphocytes
- Thoroughly absorbed to remove cross-reactivity to B-lymphocytes

CL 2001 1 ml, lyophilized \$ 25.00
CL 2005 5 ml, lyophilized \$100.00

LYMPHOLYTE-M

FOR THE ISOLATION OF VIABLE MOUSE LYMPHOCYTES

- Isolation of viable lymphocytes from all mouse lymphoid tissues
- Removal of dead cells in sequential cytotoxicity studies
- Removal of dead cells from lymphocyte cell cultures

CL 5030 5 x 30 ml, sterile \$50.00

CEDARLANE CYTOTOXICITY MEDIUM

FOR CYTOTOXICITY ASSAYS UTILIZING MOUSE LYMPHOCYTES

- Medium designed specifically for use with cytotoxic antisera to mouse lymphocytes
- Contains HEPES buffer to maintain pH
- Contains BSA to reduce background toxicity

CL 95100 5 x 100 ml, sterile \$25.00

HEMO-LO GUINEA PIG COMPLEMENT

FOR SENSITIVE SRBC PLAQUE ASSAYS

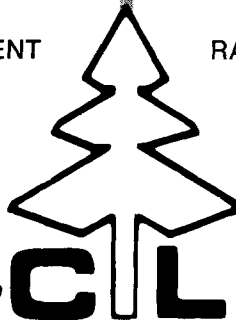
- Low background hemolysis, pre-absorbed with SRBC
- High complement activity
- For plaque assays utilizing free or haptenated SRBC

CL 4555 5 x 5 ml, lyophilized \$60.00

RABBIT ANTI-MOUSE IMMUNOGLOBULIN ANTISERUM

- Polyvalent, high titer, specific
- Uses: Developing serum for IgG-pfc
Second antibody for mouse alloantisera
B-cell studies
Immunodiffusion techniques

CL 6002 2 ml, lyophilized \$25.00



*For further details, request your copy of the
Cedarlane Mouse Immunology Brochure*

Direct orders or inquiries to:

UNITED STATES:



**ACCURATE CHEMICAL &
SCIENTIFIC CORPORATION**

28 TEC STREET, HICKSVILLE, N.Y. 11801

Telephone (516) 433-4900

WORLDWIDE EXCEPT U.S.



**CEDARLANE
LABORATORIES
LIMITED**

493A WELLINGTON ROAD SOUTH
LONDON, ONTARIO, CANADA N6C 4R3

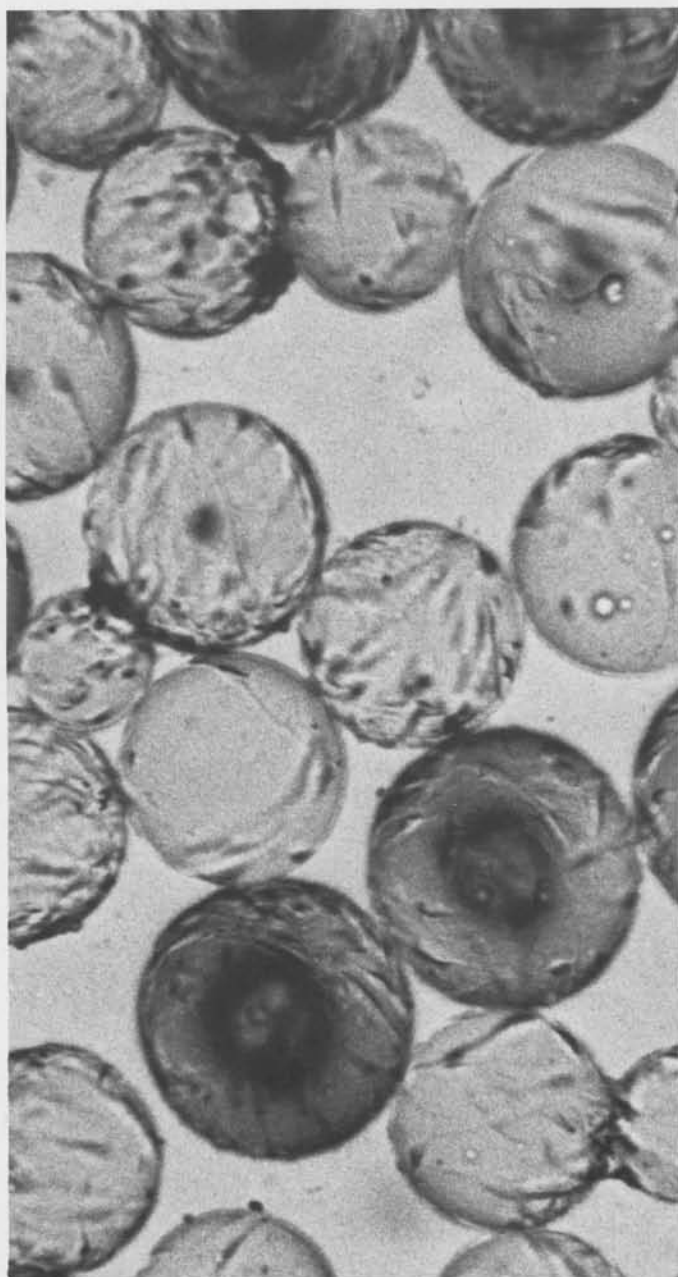
Telephone (519) 686-0415

For culture of anchorage-dependent cells

Sterile, Ready-to-use

Superbead™

Microcarriers...



Superbead, Cell Raisers and Flow Laboratories are trademarks of Flow Laboratories, Inc.

NOW! Available from the **Cell Raisers** at **Flow Laboratories** a **NEW** product for growing anchorage-dependent cells...

- sterile, ready-to-use hydrated beads in phosphate buffered saline without Ca or Mg
- provides LARGE surface area in relatively small space—(Levine (MIT) reports 6100 cm² per gram¹)
- composed of diethylaminoethyl (DEAE) anion exchange groups bound to a dextran matrix as described by Levine et. al.¹
- reduces media/sera requirements
- reduces incubator space needed
- developed at Massachusetts Institute of Technology (patent pending)
- Potential use in the production of ...
 - viruses²
 - viral vaccine^{3,4}
 - hormones^{3,4}
 - biological pesticides^{3,4}

References

1. Levine, D. W.; Wong, J. S.; Wang, D. I. C.; and Thilly, W. G., (1977) Somatic Cell Genetics, 3:149-155.
2. Giard, D. J.; Thilly, W. G.; Wang, D. I. C.; and Levine, D. W., (1977) Appl. Environ. Microbiol., 34:668-672.
3. ASM News (1977) 43:524.
4. Chemical Week (August 10, 1977) pp. 34-35.



For technical data and pricing information contact:

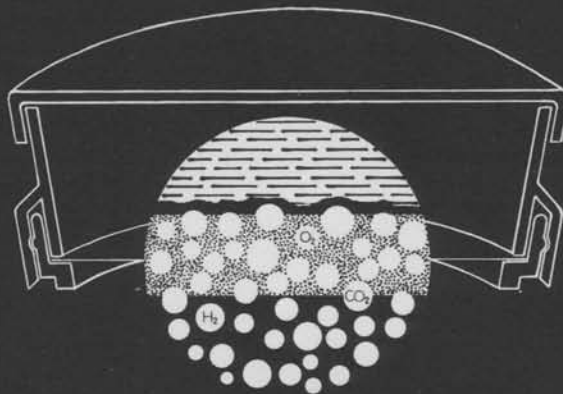
Flow Laboratories, Inc.

Subsidiary of Flow General Inc.

1710 Chapman Avenue
Rockville, Maryland 20852
(301) 881-2900

If it doesn't say Flow Laboratories, it's not a Cell Raisers product.

A new approach in tissue culture



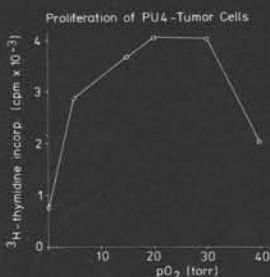
Petriperm

a novel culture dish
with gas permeable
membrane as cellular
support

Additional advantages of the PETRIPERM membrane are:

- UV permeable 200 nm
- Suitable for high power light and fluorescence microscopy
- The membrane can be cut for cell cloning, electron microscopy, staining and documentation.
- Chemically resistant to acids, bases and organic solvents

PETRIPERM is available either with a hydrophilic surface for optimal attachment, or with a hydrophobic surface for easy detachment of adherent cells.



In the intact animal, the pH, and the partial pressure of both oxygen and CO₂ of the cell environment are under total biochemical and physiological control. This state is not even approximated by available techniques of monolayer cell culture in conventional tissue culture ware. Continuously changing gradients of these parameters in the microenvironment of cultured cells will obscure the biological significance of culture dependent phenomena. PETRIPERM is the prerequisite for the precise control of pO₂, pCO₂ and pH in the cellular environment as gases reach the cultured cells directly through the highly gas permeable, 25 µm thick membrane.

Heraeus
CO₂-Incubator
B 5060 EK/CO₂

Heraeus builds the
incubator with
appropriate
pCO₂, pH and pO₂
control units.



W. C. HERAEUS GMBH
Produktbereich
Elektrowärme
D-6450 HANAU

Heraeus

THE JOURNAL OF IMMUNOLOGY

NOW AVAILABLE FOR

IMMEDIATE DELIVERY

Sprague-Dawley
Osborne / Mendel
Wistar
RATS

Certified Pathogen Free

WITH DEFINED ASSOCIATED FLORA
Caesarean derived · Barrier reared

Superlative is the word that best describes the new **CAMM Certified Pathogen Free Rats** and you can now get them in Sprague-Dawley, Osborne/Mendel or Wistar strains.

Researchers and scientists from facilities all around the country have been writing to us telling us how pleased they are with these new CAMM rats. They are available now. Ready for shipment today by company trucks or Direct Route Air Express. Please contact us with your requirements. Ask for our price list.

WE SHIP EVERYWHERE
By Company Truck and
Direct Route Air Express

cammm
RESEARCH LAB ANIMALS

414 Black Oak Ridge Road, Wayne, New Jersey 07470
201 / 694 - 0703



...consistent quality at
a reasonable price!

ANTISERUM TO —

**C-3 PROACTIVATOR
PROPERDIN**

C-4 (BIE)

C-5 (BIF)

C-Iq

C-3 (BIC only)

**C-3_b INACTIVATOR
(KAF)**

**FAB FRAGMENT
LAMBDA**

New low cost R.I.D. Plates
for IgG, IgA, IgM, etc.
Fluorescein and Rhodamine Coagulates

Call or write for complete listing and special pricing

KENT LABORATORIES
23404 N.E. 8th
REDMOND, WASH. 98052
(206) 885-9005

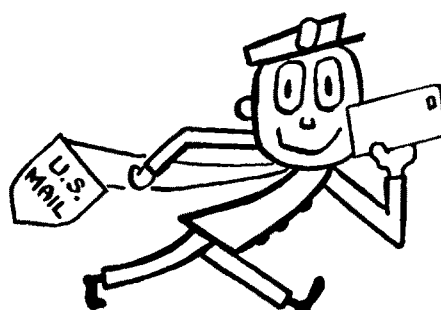
FLOW LABS GMBH
53 Bonn 3
Diezstrasse 10, W. Germany
(02221) 220041

HUCOA ERLOSS
Avda. Del Generalísimo, 161
Madrid 16, Spain
91-215 69 41

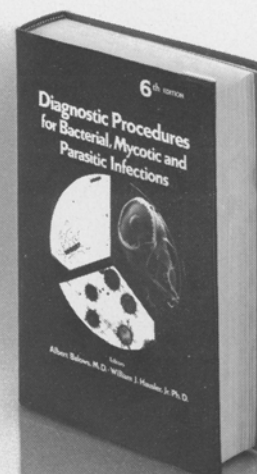
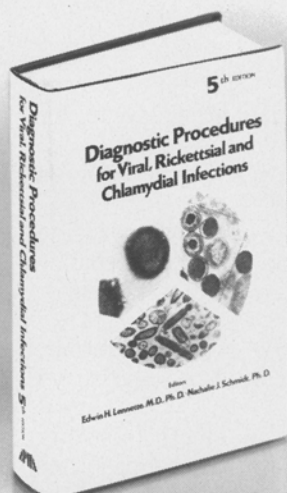
**Help us to
serve you
better.....**

If your mailing label does
not contain your zip code,
note it on the label and re-
turn it to us for correction.

Remember, your Zip Code
provides faster, more direct
delivery of your journals. Use
it on all correspondence, too.



Pushing back the frontiers of medicine



The new editions of these two highly respected books reveal the dramatic strides taken in the last few years in laboratory diagnosis of infectious disease. Both books include a vast amount of detailed, up-to-date information and reflect current laboratory practices, legal requirements, and the increased demands placed on health laboratories.

Two-volume set \$49.00

Diagnostic Procedures for Viral, Rickettsial and Chlamydial Infections

Fifth Edition

Edwin H. Lennette and Nathalie J. Schmidt, eds.

Recent breakthroughs in knowledge of the herpes viruses, followed by an explosion of research, have brought a new understanding of viral hepatitis, viral gastroenteritis, and Epstein-Barr viral disease. The book contains the latest information in these areas and also on viral immunology – cell mediated immunity, immune complexes, and the relation of immunoglobulin classes to laboratory diagnosis. New chapters on radioimmunoassay and immunoenzymatic techniques have been added and the chapter on fluorescent antibodies expanded. Finally, the new title reflects the increasing recognition of the *chlamydiae* as important disease agents.

Approx. 1000 pages. Pub. date, November 15. \$28.00

Diagnostic Procedures for Bacterial, Mycotic and Parasitic Infections

Sixth Edition

Albert Balows and William J. Hausler, Jr., eds.

The discussion of operation and management of laboratories includes a new chapter on the role of the laboratory in epidemiology, nosocomial infections, opportunistic infections, and infection control. New material on bacterial diseases includes cell wall defective organisms and their relation to infection, mycoplasma infections, antibiotic susceptibility testing and immunodiagnostic techniques. The mycotic diseases section now covers opportunistic mycotic infections and antifungal susceptibility tests. The section on parasitic diseases has new chapters on malaria, protozoan and helminth infections. The book gives an authoritative discussion of the agent involved in "Legionnaires' disease." Approx. 1000 pages. Pub. date, early 1979. \$28.00

Also – an important new book

Quality Assurance Practices for Health Laboratories

Five management and 15 discipline-specific chapters provide guidelines for improving performance of health and environmental laboratories. (1978) 1264 pages. \$40.00

American Public Health Association/1015 18th St. N.W./Washington, D.C. 20036

SPECIAL PREPUBLICATION OFFER (No Dealers!)

Order all three of the above books before December 31, 1978, and you will receive a free bonus copy of *Control of Communicable Diseases in Man*, 12th ed., containing comprehensive diagnostic and control information on 118 diseases. **Act now! \$69.00 for all four books (a \$100 value).** Books will be delivered as available by UPS, so be sure to give your street address.

No. ordered _____ *Diagnostic Procedures for Viral, Rickettsial and Chlamydial Infections* @ \$28.00

_____ *Diagnostic Procedures for Bacterial, Mycotic and Parasitic Infections* @ \$28.00

_____ Two-volume set of the above @ \$49.00

_____ *Quality Assurance Practices for Health Laboratories* @ \$40.00

_____ *Control of Communicable Diseases in Man* @ \$4.00

_____ SPECIAL PREPUBLICATION OFFER – Four books @ \$69.00 (\$100 value!)

ORDER FORM

Name _____

Address _____

City _____

State _____ Zip _____

☐ Check for \$_____ enclosed ☐ Bill me

Send to: **American Public Health Association**

1015 18th St. N.W./Washington, D.C. 20036

LKB Ampholine®

Your standard in electrofocusing.

LKB Ampholine® carrier ampholytes form superior linear and reproducible pH gradients, for optimal separations and accurate pI determinations.

They have very high buffering capacity and conductivity. UV absorbance at 280 nm is so low that you can detect proteins without removing them from the pH gradient.



Ampholine has only amino and carboxyl functional groups, to limit binding possibilities with proteins; you can easily separate Ampholine and proteins, but this is not always necessary even for enzyme assays.

Besides the large selection of Ampholine pH ranges available, you can make other ranges simply by mixing one Ampholine carrier ampholyte with another.

LKB offers the complete system for electrofocusing: Multiphor, LKB 2103 Power Supply, Ampholine® and Ampholine® PAGplates — your standards in electrofocusing. All supported by LKB Application Notes and *Acta Ampholinae* Literature Reference List.

For more information write to LKB: the only complete source of experience, knowledge and equipment for electrofocusing. LKB Instruments Inc., 12221 Parklawn Dr. Rockville, MD 20852; (301) 881-2510; Telex 89-682.

LKB

Behringwerke

Wir sind ein namhaftes Unternehmen der pharmazeutischen Industrie mit Sitz in der Universitätsstadt Marburg und gehören zur Hoechst-Gruppe. Im Rahmen unserer virologischen Forschung entwickeln wir neue Präparate für Therapie und Prophylaxe und suchen deshalb einen jüngeren

Naturwissenschaftler/ Virologen (Mediziner, Biochemiker, Biologe oder Chemiker)

der über ein virologisches oder immunologisches Thema promoviert hat bzw. bereits seit mehreren Jahren in einem virologischen Institut tätig ist und über entsprechende Erfahrungen verfügt.

Er sollte etwa 30 Jahre alt sein, gute Englischkenntnisse besitzen und zur Teamarbeit in der Lage sein.

Unsere finanziellen und sozialen Leistungen entsprechen der Bedeutung dieser Position. Die näheren Einzelheiten möchten wir dann ggf. in einem persönlichen Gespräch erörtern.

Bitte richten Sie Ihre Bewerbung zunächst mit ausführlichen Unterlagen an die

Personalabteilung der Behringwerke AG
Postfach 1140 · 3550 Marburg 1

BEHRING INSTITUT

S. Behring

THE JOURNAL OF IMMUNOLOGY

PROTEINS

(From Many Species)

Chromatographically Isolated

Albumin
IgG
Transferrin

Fluorescein Conjugated Albumin

Rhodamine Conjugated Albumin

Ferritin Conjugated IgG

Fluorescein Conjugated IgG

Peroxidase Conjugated IgG

Rhodamine Conjugated IgG

Human IgG

Human IgG (Fab Fragment)

Human IgG (F(ab')₂ Fragment)

Human IgM

Human Lactoferrin

Human Myoglobin

Human Transferrin

Human Whey (Milk)

Rabbit IgG

Rabbit IgG (Fab Fragment)

Rabbit IgG (F(ab')₂ Fragment)

(Also available: Bovine, Goat and
Sheep IgG Fab and F(ab')₂ Fragments)



Specialists in Fluorescein, Rhodamine,
Ferritin, Peroxidase and Custom Conjugations
and of Conjugated F(ab')₂ Fragments or
Fab Fragments of Antiserums.

Cappel Laboratories, Inc.

COCHRANVILLE, PA. 19330 • (215) 593-6914

We're all using it!



PharmalyteTM, the new ampholyte

Pharmalyte is part of a new integrated system for flat bed isoelectric focusing, electrophoresis and immunoelectrophoresis. Find out more about Pharmalyte and the Pharmacia Flat Bed System – today!

Pharmalyte gives you:

- Convenient and stable gradient intervals without mixing
- More resolution. Over 1000 high buffering capacity ampholytes per pH interval
- Less risk of local "hot-spots" and overheating because the conductivity is even across the whole gradient
- Easier recovery of proteins. Pharmalyte doesn't contain high molecular weight contaminants.

Pharmalyte is a series of new and unique carrier ampholytes developed entirely within the research laboratories of Pharmacia Fine Chemicals to give you superior resolution in isoelectric focusing.

Pharmacia Fine Chemicals
Division of Pharmacia, Inc.
Piscataway, New Jersey 08854
Phone (201) 469-1222

