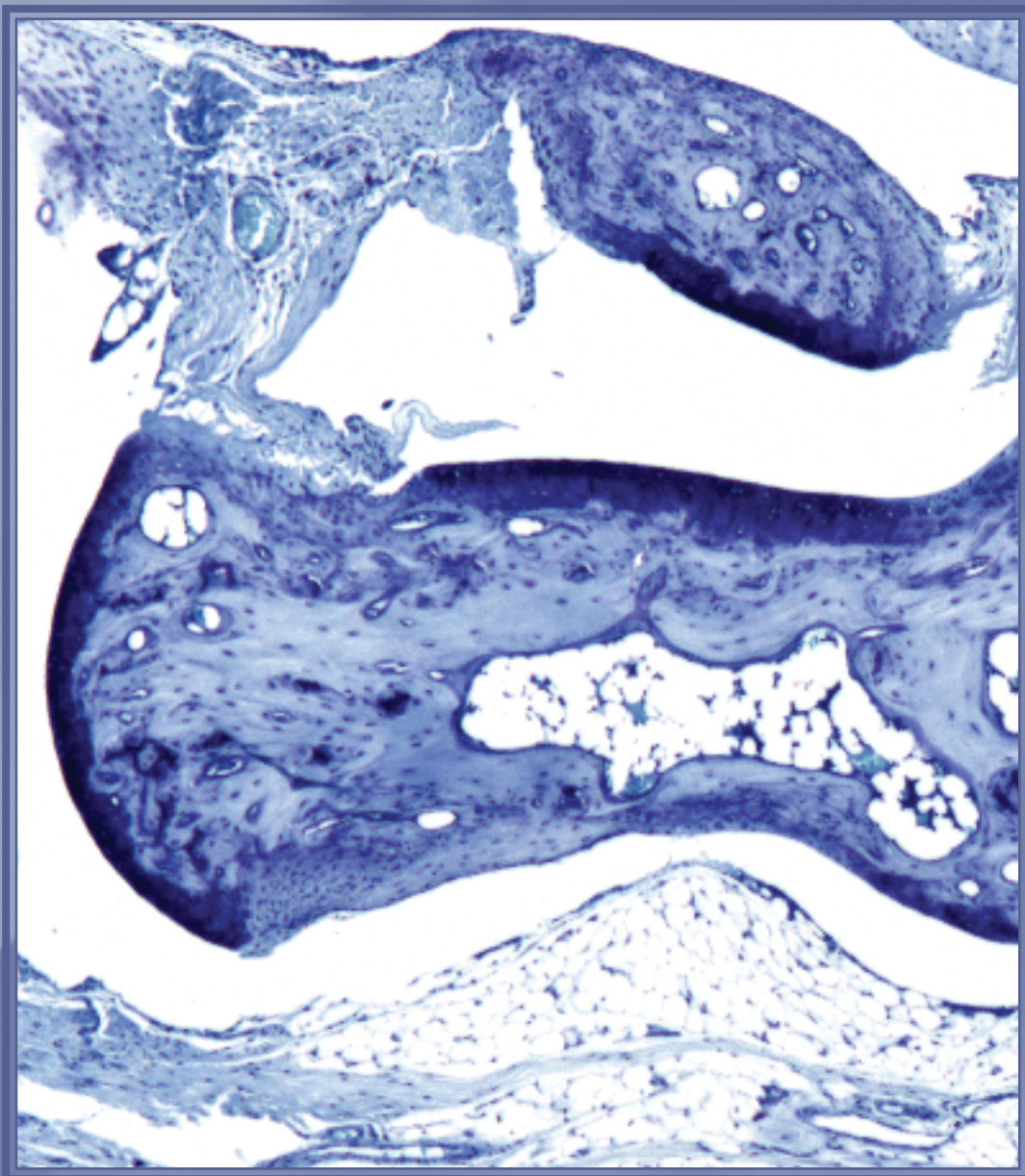


www.jimmunol.org

Volume 177 / No. 4 / August 15, 2006

# IMMUNOLOGY

THE JOURNAL OF



# The Journal of Immunology

Does your organization have  
an active subscription to the  
foremost global scholarly immunology  
journal in the field?

Do you know that this peer-reviewed  
journal is highly affordable and  
prints 15,000 pages a year?

Do you know what you are missing  
if you don't subscribe to *The JI*?

**If you don't know what's in *The JI*,  
you don't know what's going on  
in immunology.**

**Editor-in-Chief** Robert R. Rich, M.D.  
**Executive Director/Managing Editor, AAI** M. Michele Hogan, Ph.D.



Here are some reasons to read and  
publish in *The JI*:

- 15th most cited biomedical  
journal (out of 6,089 ISI ranked  
scientific journals)
- New online features and upgrades:
  - Online manuscript submission  
program
  - Full text searching with  
full text display options
  - Advanced web searching  
including citation mapping
  - Table of Contents delivered  
via e-mail
  - Searchable online print archives  
back to 1980

We invite you to visit our Web site at  
**[www.jimmunol.org](http://www.jimmunol.org)**  
for more information or contact  
Claire Sinks, Manager of Content  
Licensing and Subscriptions for  
*The Journal of Immunology*  
at 301-634-7805.

# IMMUNOLOGY

THE JOURNAL OF



## *The JI Online!*

*The Journal of Immunology is available online at:*

**[www.jimmunol.org](http://www.jimmunol.org)**

All Table of Contents, abstracts, and full-text of articles published 1998 to one year ago are available free to all viewers. Subscribers may also access the full text of articles from 1980 to the present time.

To activate your subscription and gain access, follow the complete instructions on the website by clicking on **Subscriptions**. Additional information including Editorial Policies of *The JI*, how to become a reviewer, information for authors, and purchasing a subscription can also be accessed on the website.



## **Notice to Authors Submitting Manuscripts to *The Journal of Immunology***

### **“Rapid Inspector” Tool is Integral Component of *The JI’s* Electronic Manuscript Submission Process**

As of October 1, 2004, *The Journal of Immunology* (*The JI*) began accepting new manuscript submissions exclusively via online submission, using eMTS, *The JI’s* manuscript submission and tracking system.

Authors of revised and accepted manuscripts must test the quality of their digital images using the preflight software **Rapid Inspector**. This step is a requirement of *The JI’s* all-electronic production process. Preflight software is available as a downloadable Java applet by visiting: **<http://rapidinspector.cadmus.com/zim>**.

The above-referenced website includes detailed instructions on the installation of this application as well as guidelines for solving common problems with digital images. For assistance in using this tool, or in resolving problems that are reported with your images, contact *The JI’s* digital art support team. This is a dedicated helpline for *The JI’s* authors from which you can expect a response within 24 hours. It is available through e-mail and telephone:

E-mail: [jidart@cadmus.com](mailto:jidart@cadmus.com)

Telephone: 410-691-6211

The helpdesk will guide you through solving your problems with digital art and support you in preparing images for publication.

## Special Discounts for AAI Member Authors



### Waiver of Manuscript Submission Fee for AAI Members

Corresponding authors who are regular, emeritus, or honorary AAI members in good standing on the date of manuscript submission to *The Journal of Immunology* (*The JI*) receive a waiver of the regular \$50 submission fee.

### Reduced Charges for Color Figures

Corresponding authors who are regular, emeritus, or honorary AAI members in good standing on the date their manuscript is accepted for publication in *The JI* are entitled to reduced charges for submitted color figures. AAI members receive a \$200 reduction for the first color figure on each page.

---

For complete details on AAI member privileges and benefits, eligibility requirements, and application forms, please visit [www.aai.org/membership](http://www.aai.org/membership) or contact the AAI membership office at 301-634-7195 or by e-mail to [members@aai.org](mailto:members@aai.org).

For complete details on manuscript submission to *The JI*, please visit [www.jimmunol.org](http://www.jimmunol.org) or contact *The JI* office at 301-634-7197 or by e-mail to [infoji@aai.org](mailto:infoji@aai.org).