

cell signaling research antibodies and siRNA gene silencers

Shc/IRS and Related Proteins
SOCS Family
Heat Shock Proteins
Annexin Family
Heterotrimeric G Proteins
TRAF/CRAF

Cyclooxygenases
EGFR and PDGFR
Protein Kinase C Family
14-3-3 Proteins
SH2/SH3 Domain Proteins
Src Family Proteins

Metalloproteinases
Ubiquitin and SUMO-1
Phospholipases
Nitric Oxide Synthase
Nuclear Transport Family
ERK and JNK

santa cruz biotechnology, inc.



The Power to Question

Headquarters

Santa Cruz Biotechnology, Inc.

2145 Delaware Avenue

Santa Cruz, California 95060

Tel: 831.457.3800

Toll Free: 800.457.3801

European Support Office

Santa Cruz Biotechnology, Inc.

Bergheimer Str. 89-2

69115 Heidelberg, Germany

Tel: +49 6221 4503 0

Toll Free: +00800 4573 8000



www.scbt.com

Growing excellence...

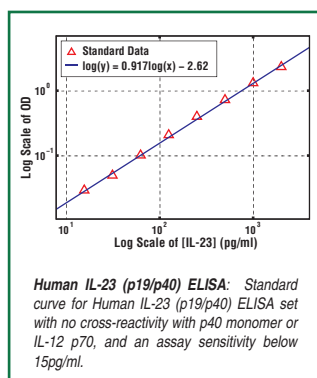
eBioscience presents

IL-17 & IL-23

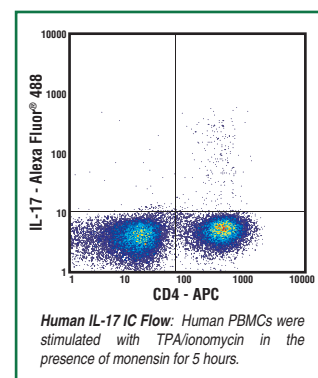
ELISA, ELISPOT & Flow Cytometry



eBioscience offers a growing panel of cytokine antibodies validated for key applications:



- Recombinant proteins (lowest endotoxin in the industry, tagless, authentic, non-linked, carrier-free, bulk & small sizes)
- ELISA (matched pairs, sets, kits with pre-coated plates)
- Neutralization (Functional Grade antibodies are sterility & endotoxin tested; lowest endotoxin in the industry)
- ELISPOT (stand alone antibody pairs and sets)
- Intracellular staining for flow cytometric analysis (FITC, PE, PE-Cy5, APC, Alexa Fluor® 488, Alexa Fluor® 647, Alexa Fluor® 700, Pacific Blue®)

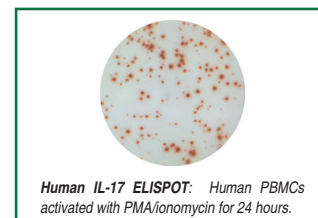


New additions to the eBioscience cytokine product portfolio include Granzyme B & TGF- β 1 ELISAs, as well as reagents for IL-1 β , IL-13, IL-23, IL-28, IL-29, HGF, TGF- β /LAP and VEGF.

Use code **J196** to receive a free sports bottle & t-shirt with your next \$500+ purchase.*

*Expires 10/31/06. For end users only.

Alexa Fluor® and Pacific Blue® are registered trademarks of and licensed under patents assigned to Molecular Probes, Inc. for research use only.

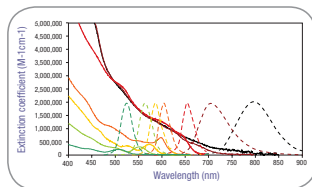


eBioscience
the new standard of excellence™

LESS
SOLO.



MORE
ENSEMBLE.



We're bringing together the best names in flow cytometry. Molecular Probes™, Caltag™, Dynal®, Qdot®, Zymed®, and BioSource™ brands are part of Invitrogen. So now you can find the most reliable and effective innovations in flow cytometry in one place. See what's possible when we all work together at www.invitrogen.com/flowcytometry.

 **invitrogen™**



MACS® Products for separation, analysis, and *ex vivo* generation of dendritic cells

Isolation

- Unique cell isolation kits for DCs and DC subsets from human, mouse, rat, and non-human primate

Enumeration

- Ready-to-use antibody cocktails for whole blood DC counting

Identification

- Broad panel of antibodies specific for different DC subsets

Ex vivo generation

- Reliable monocyte isolation for reproducible generation of Mo-DCs

Depletion

- *In vivo* depletion of mouse PDCs

Miltenyi Biotec

www.miltenyibiotec.com

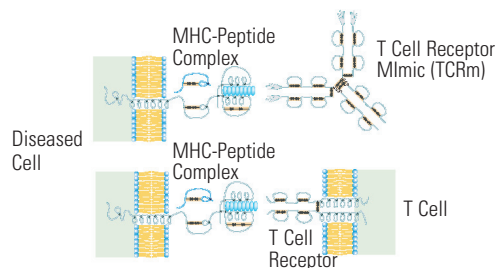
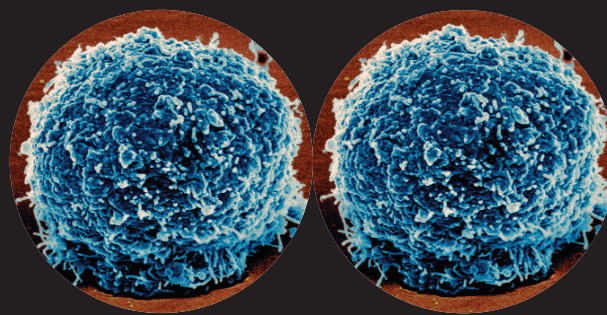


Germany
USA

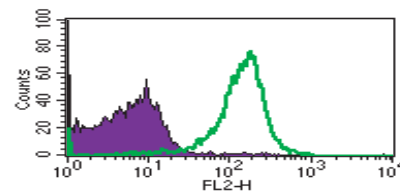
Phone +49 2204 8306-0
Phone 800 FOR MACS

Fax +49 2204 85197
Fax 530 888 925

We see proteomics through the eyes of a T Cell.



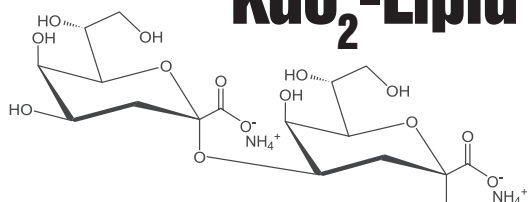
*Receptor Logic's antibodies interact with the MHC-peptide complex with the same specificity as a T cell receptor. MDA-231 Breast Carcinoma Cells (green line in chart below) stained with TCRm antibody to Her2/neu presented by HLA*A2 are easily distinguished from isotype control.*



**RECEPTOR
LOGIC**

To find out more about our high-quality antibodies for MHC peptides, visit www.receptorlogic.com/jia

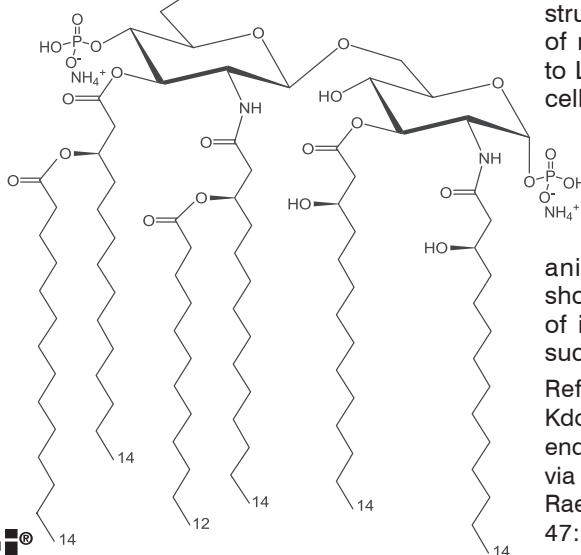
Kdo₂-Lipid A – an Endotoxin to replace LPS. Only from Avanti®



Kdo₂-Lipid A
Avanti Number
699500



Avanti®
POLAR LIPIDS, INC.



A new preparation of the saccharolipid glycan, Kdo₂-Lipid A, is a nearly homogeneous Re lipopolysaccharide (LPS) substructure with endotoxin activity equal to that of native LPS. Kdo₂-Lipid A is comparable to LPS and its activity is reduced by >10³ in cells from TLR-4 deficient mice.

The advantage of Kdo₂-Lipid A over LPS is that it is a reproducible, defined natural product, and it can be detected by ESI/MS at the low concentrations used to stimulate animal cells. The purity of Kdo₂-Lipid A should also facilitate the structural analysis of its complexes with signaling receptors, such as TLR-4/MD2.

Reference

Kdo₂-Lipid A of *Escherichia coli*, a defined endotoxin that activates macrophages via TLR-4.

Raetz, C.R.H. *et al.* (2006) *J. of Lipid Res.* 47:1097-111.

Phone 800-227-0651 (205-663-2494 International) or Email info@avantilipids.com
for details of Avanti's selection of lipids of unparalleled purity visit www.avantilipids.com

WE SELL THE GOOD STUFF AT AVANTILIPIDS.COM

IMMUNOLOGY

THE JOURNAL OF



The JI Online!

The Journal of Immunology is available online at:

www.jimmunol.org

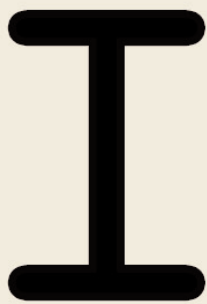
All Table of Contents, abstracts, and full-text of articles published 1998 to one year ago are available free to all viewers. Subscribers may also access the full text of articles from 1980 to the present time.

To activate your subscription and gain access, follow the complete instructions on the website by clicking on **Subscriptions**. Additional information including Editorial Policies of *The JI*, how to become a reviewer, information for authors, and purchasing a subscription can also be accessed on the website.

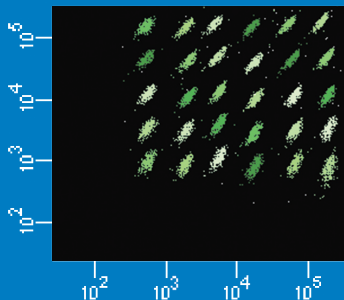


BD™ Cytometric Bead Array System

For Bead-based Multiplexing



Compatibility at first sight.



Human cytokine 30-plex acquired on the BD FACSArray bioanalyzer

BD Biosciences provides a complete solution for multiplex bead applications by creating the perfect partnership between assays and instrumentation. In combination, the BD FACSArray™ bioanalyzer and BD™ CBA Flex Set assays deliver powerful multiplex bead capability in an easy-to-use platform.



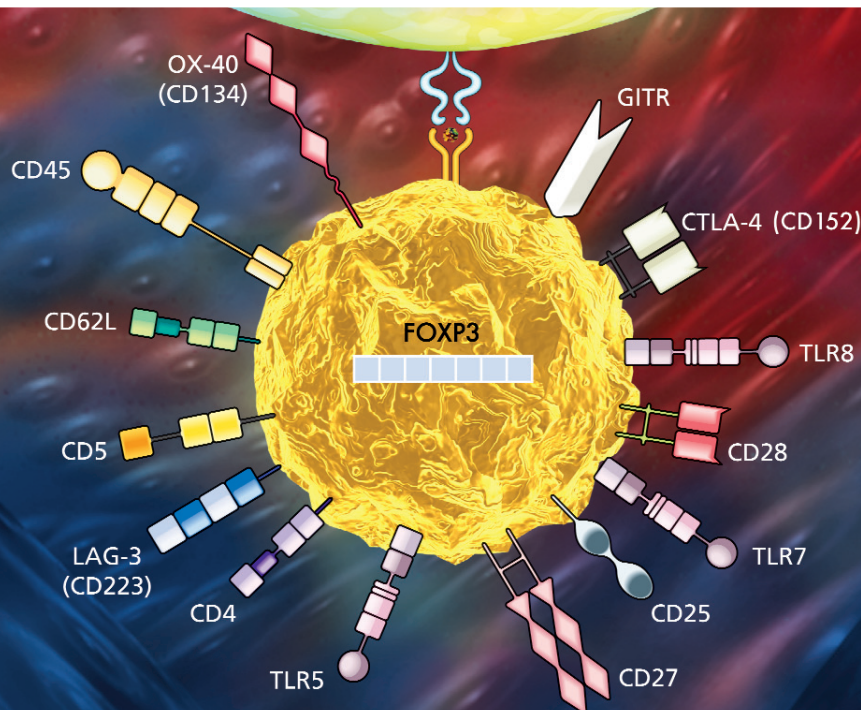
Helping all people live healthy lives

This beautiful union of instrument and assay is dedicated to advancing your scientific research and discovery.

Visit us at bdbiosciences.com/flexset to learn more.

Shop online at shop.bdbiosciences.com

With our antibodies you too can follow the regulations!



AbD Serotec has dozens of antibodies to human, mouse and rat regulatory T cell markers including the following key specificities:

Specificity	Target	Host	Clone	Applications	Product Code	Formats Available
CD4	Human	Mouse	RPA-T4	C, F	MCA1267	Purified, Alexa Fluor® 405, Alexa Fluor® 488, Alexa Fluor® 647, APC, Azide Free, Biotin, FITC, Low Endotoxin, Pacific Blue™, RPE, RPE-Alexa Fluor® 647, RPE-Alexa Fluor® 750
CD8 alpha	Rat	Mouse	OX-8	C, F, P	MCA48R	Purified, Alexa Fluor® 488, Alexa Fluor® 647, Azide Free, Biotin, FITC, RPE, RPE-Cy5
CD25	Human	Mouse	MEM-181	F	MCA2127	Purified, Alexa Fluor® 488, Alexa Fluor® 647, Biotin, FITC, RPE
CD28	Human	Rat	YTH 913.12	C, F	MCA709	Purified, Alexa Fluor® 647, Biotin, FITC, Low Endotoxin, RPE
CD152 (CTLA-4)	Rat	Mouse	WKH203	E, F, WB	MCA2092	Purified, Azide Free, Biotin, FITC, RPE
CD223 (LAG-3)	Mouse	Rat	C9B7W	F	MCA2386	Purified, Alexa Fluor® 488, Alexa Fluor® 647, Low Endotoxin, RPE
FOXP3	Human	Mouse	236A/E7	C, P	MCA2376	Purified, Alexa Fluor® 488, Alexa Fluor® 647
GITR	Mouse	Rat	YGITR765	F	MCA2416	Purified, Alexa Fluor® 488, Alexa Fluor® 647, Low Endotoxin

C = Cryostat sections, E = ELISA, F = Flow cytometry, P = Paraffin sections, WB = Western blots

Visit us at www.ab-direct.com/JI to see our full Treg marker range.

North America: +1 800 265 7376
 UK & Ireland: +44 1865 852 700
 Germany: +49 211 93 503 10
 France: +33 1 34 25 83 34
 Email: sales@ab-direct.com

www.ab-direct.com
Your first choice for antibodies!

AbD
serotec
 A Division of MorphoSys

**Department of Health and Human Services
National Institutes of Health
National Institute of Neurological Disorders and Stroke**



**Tenured/Tenure-Track Position
Neuroimmunology (Clinical)
Division of Intramural Research**

The Division of Intramural Research of the National Institute of Neurological Disorders and Stroke is recruiting an individual for a tenured or tenure-track position in the area of neuroimmunology with a focus on clinical research. The applicant should have a special interest and experience in translational clinical research relating to multiple sclerosis or other immune mediated disease of the central nervous system. The individual would direct an independent research program on immune mediated diseases of the nervous system and especially multiple sclerosis. The program would conduct its work in conjunction with the Neuroimmunology Branch (NIB) which was established to study the cause and treatment of immunological mediated diseases of the central nervous system. The individual should have a demonstrated background and knowledge in research focused on immune mediated disease of the nervous system and with expertise in human immunology and/or the application of clinical trial methodology to the study of disease mechanisms and testing new therapies. The candidate will have earned a M.D. degree and will have excellent scientific skills in structuring an original and productive research program using outstanding communication and collaborative abilities. The candidate will have a medical license in the United States and preference will be given to a candidate who has completed training in an accredited training program in neurology and is either board eligible or board certified in Neurology. Candidates for a tenured position must have an international reputation and well-documented evidence of ongoing independent accomplishments. An individual selected for a tenure-track position is expected to build a dynamic and productive research group. Laboratory facilities, start-up and sustained research funds and salary will be competitive with premier academic institutions. Applicants should send curriculum vitae, bibliography, statement of research interests, and names of references to: Dr. Story Landis, Director, National Institute of Neurological Disorders and Stroke, c/o Peggy Rollins, Office of the Scientific Director, Division of Intramural Research, Building 35 Room GA908, NIH, Bethesda, MD 20892. Applications will be reviewed upon receipt.



HHS and NIH are Equal Opportunity Employers





Need to Recruit?

Recruiting through *The Journal of Immunology* is the most economical way to reach the immunologic community without wasting money. Why pay more to reach geologists and physicists when you are seeking immunologists?

A quarter-page advertisement costs \$760.00.

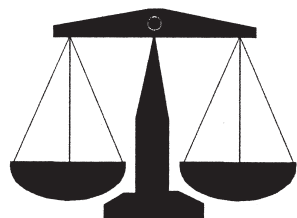
For further information, contact:

Steve West

Professional Media Group (PMG)

Tel: (856) 589-5454 ext. 14

steve@promedgroup.net



EASY ONLINE COPYRIGHT REQUEST FORM!

Do You Need Copyright Permission?

Submit copyright requests online at
www.aai.org/ji/copyright.html.

Enter the name and institution contact information. Provide the citation of the original journal article. When adapting a figure or table, submit the request online and FAX the modified figure to 301-634-7829. State where the article will be reproduced and indicate the anticipated date of publication.

FACULTY POSITIONS IN CELLULAR AND MOLECULAR IMMUNOLOGY

The Immunology Program at the H. Lee Moffitt Cancer Center & Research Institute and the University of South Florida's College of Medicine, Department of Interdisciplinary Oncology, are seeking highly qualified (Ph.D. or M.D.) applicants for tenure track positions in Cellular and Molecular Immunology at Assistant, Associate and Full Professor levels. While applicants in all areas of Cellular and Molecular Immunology may apply, we are especially interested in individuals with expertise in T cell and dendritic cell biology, innate immunity, and tumor immunology. Applicants with a strong interest in bridging basic and translational research in the area of cancer immunology and immunotherapy are especially encouraged to apply. Successful applicants will be expected to develop an outstanding research program in their area of interest.

The Assistant Professor must have at least four years of postdoctoral experience in tumor immunology and high quality publications in peer-reviewed journals. The Associate/Full Professor must have a proven track record of independent research and demonstrated sustained extramural funding. In addition, the Associate Professor rank requires at least five years of experience with continuing and productive service as an Assistant Professor. The Professor rank requires documentation of national recognition, leadership ability and at least five years of experience with continuing and productive service as an Associate Professor. Salary is negotiable.

The Moffitt Cancer Center and Research Institute provides an exceptional environment for basic and translational research in Immunology, Molecular Oncology and Drug Discoveries. Extensive state-of-the-art core facilities are available for flow cytometry, gene profiling, proteomics, mouse model development and drug discovery. Successful applicants will be provided generous laboratory and office space in the new Vincent A. Stabile Research Building.

Please reference position DIO0526. Send curriculum vitae and a brief statement of major academic interests in one single pdf document to The Immunology Search Committee at koransky@moffitt.usf.edu. Application review begins September 1, 2006. Applications will be accepted and continuously reviewed until the position is filled.

USF Health is committed to increasing its diversity and will give individual consideration to qualified applicants for this position with experience in ethnically diverse settings, who possess varied language skills, or who have a record of research that supports/benefits diverse communities or teaching a diverse student population.

H. LEE
MOFFITT
Cancer Center & Research Institute

The End Of Cancer Begins Here.

A National Cancer Institute
Comprehensive Cancer Center
At the University of South Florida

USF University of
South Florida
College of Medicine

The University of South Florida is an EO/AA/EA institution. For disability accommodations, contact Kathy Jordan (813-632-1451) a minimum of five working days in advance. According to Florida law, search records, including applications and search committee meetings, are open to the public.

www.moffitt.usf.edu

MICHIGAN STATE UNIVERSITY

Cardiovascular Scientist in Inflammation

Inflammation and the role of the immune system in cardiovascular function and disease has been identified as an area of need for the biological/medical sciences at Michigan State University. The Biomedical Departments of Michigan State University have jointly opened a search for immediate applications for a **tenure-track assistant professor position in the cardiovascular sciences**. This is one of four positions to be filled in cross-disciplinary aspects of inflammation and immunology. For the cardiovascular position, specific areas of interest include but are **not limited to**: inflammatory cell recruitment to the cardiovascular system, role of cytokines in cardiovascular function, role of the immune system in metabolic syndromes, relationship of oxidative state to immunological status, and cerebral vascular inflammation and stroke. A doctoral degree (PhD, DO, DVM or MD), and experience in a postdoctoral position are required.

The successful applicant will have the opportunity to join a biomedical department best-suited to their research, potential for collaboration, and ability to lead

cardiovascular inflammation research on the MSU campus. MSU cardiovascular research encompasses significant strength in different scientific areas and diseases that include hypertension, stroke, and obesity. Information on cardiovascular research at MSU, as well as current faculty and collaborations can be found at <http://cardiovascular.msu.edu>.

The applicant should submit a letter of application, curriculum vitae, statement of research goals, up to five relevant reprints and full contact information (address, e-mail and phone) for three personal references to: **Stephanie W. Watts, Ph.D., Cardiovascular Inflammation Committee Chairperson, Department of Pharmacology & Toxicology, B445 Life Sciences Building, Michigan State University, East Lansing, MI 48824-1317. Fax: (517) 353-8915; Tel: (517) 353-3724; E-mail: wattss@msu.edu.**

All application materials should be submitted electronically to wattss@msu.edu.

Applications should be received by **October 30, 2006.**

MSU IS AN AFFIRMATIVE ACTION, EQUAL OPPORTUNITY INSTITUTION.

MICROBIOLOGY

Kansas City University of Medicine and Biosciences seeks applicants for a Microbiology faculty position, **which is open immediately**, and offers an opportunity to join in an exciting institutional and regional effort to enhance life sciences research.

The successful candidate must have a Ph.D. in Microbiology, Virology or Immunology, or related discipline, and demonstrated record of teaching and scholarly activities. Experience in teaching fully integrated systems-based curriculum is a plus. Responsibilities will include teaching virology and immunology to medical students and effectively contributing to an innovative curriculum.

We are looking for an outstanding educator with exemplary professional characteristics. For additional information, contact Larry W. Segars, PharmD, DrPH, FCCP, BCPS, Associate Professor and Chair, Dept. of Pharmacology and Microbiology, 1-800-234-4847, ext. 2224, or 816-283-2224. Please visit www.kcumb.edu and click on employment to view complete ad. EOE



Immunologist

Simon Fraser University is developing an integrated graduate program in infectious diseases (ID), to be mounted jointly by the Faculty of Science (FS) and the new Faculty of Health Sciences. A tenure-track faculty position is available in the Department of Molecular Biology and Biochemistry, FS, at the Assistant Professor level; under exceptional circumstances appointment might be at a higher rank. Research expertise is preferred in protective humoral immunity against infectious disease. Laboratory space, including a BCL-2/P2 biocontainment facility, will be available. Applicants should have postdoctoral research experience; teaching experience is a plus. The successful applicant will be expected to establish a funded research program, teach at the undergraduate and graduate levels, and contribute to development of the ID program.

Applicants should submit a CV, three letters of reference, up to four representative publications, and statements of research interests/plans and teaching philosophy to:

**Immunology Search Committee
MBB, Simon Fraser University
Burnaby, British Columbia, V5A 1S6 Canada
Email: mbbchair@sfu.ca**

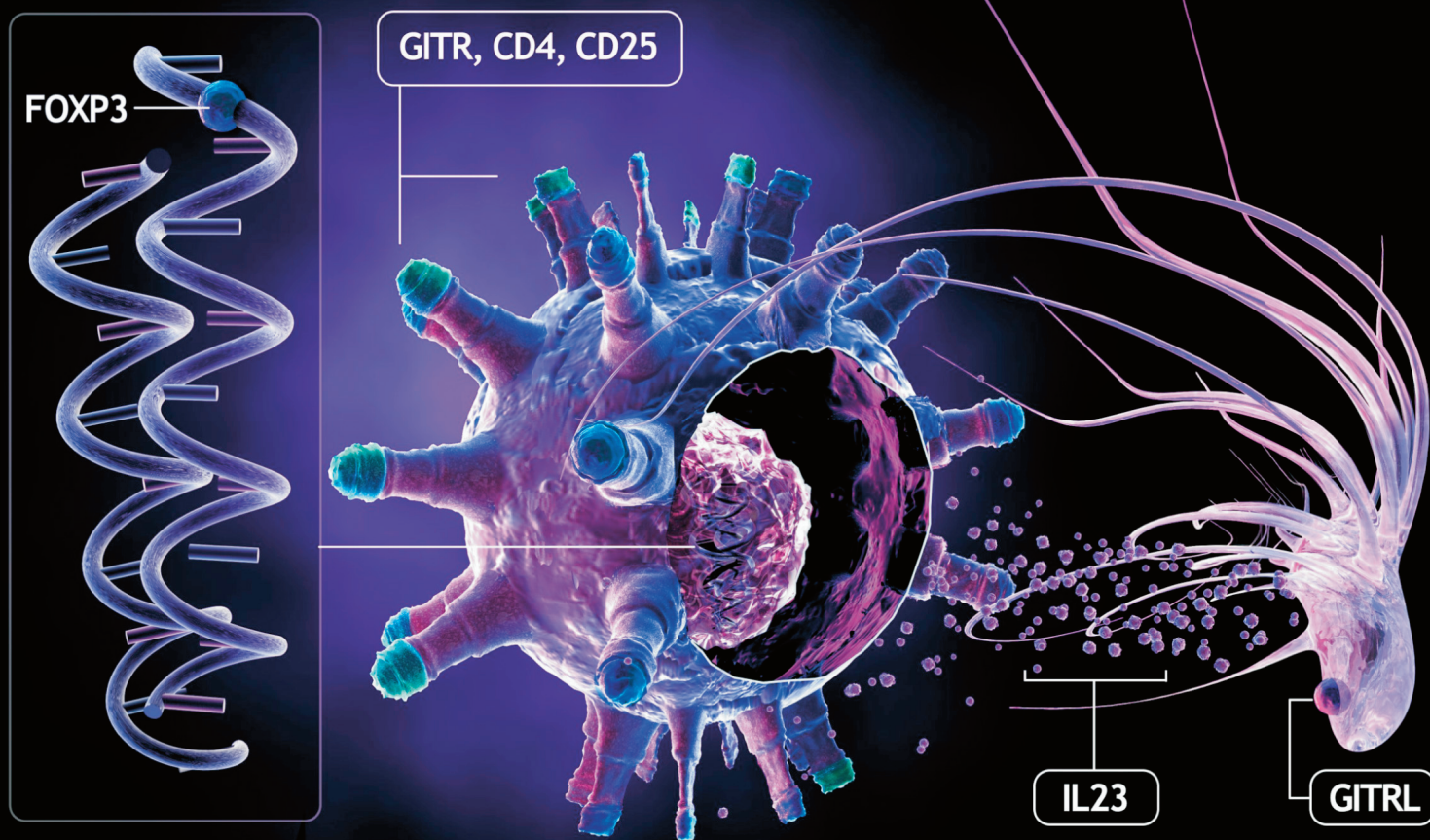
Review of applications will begin on Nov. 1, 2006, and will continue until the position is filled. See the employment section of <http://www.sfu.ca/mbb/> for more information.

All qualified candidates are encouraged to apply; however, Canadians and permanent residents will be given priority. Simon Fraser University is committed to an equity employment program that includes special measures to achieve diversity among its faculty and staff. We therefore particularly encourage applications from qualified women, First Nations people, persons with disabilities, and members of visible minorities.

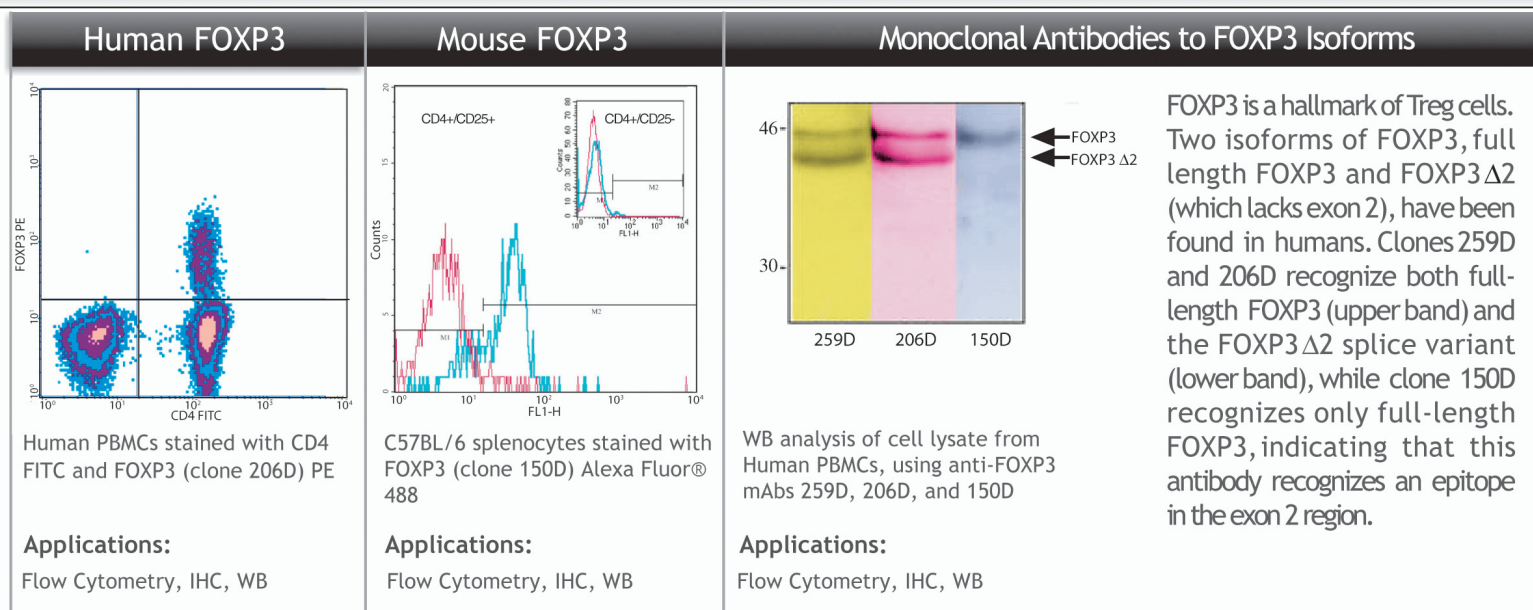
Under the authority of the University Act personal information that is required by the University for academic appointment competitions will be collected. For details see:

http://www.sfu.ca/vpacademic/Faculty_Openings/Collection_Notice.html

Accelerating T Regulatory Research



Differentiation of Full-Length vs. FOXP3 $\Delta 2$



FOXP3 is a hallmark of Treg cells. Two isoforms of FOXP3, full length FOXP3 and FOXP3 $\Delta 2$ (which lacks exon 2), have been found in humans. Clones 259D and 206D recognize both full-length FOXP3 (upper band) and the FOXP3 $\Delta 2$ splice variant (lower band), while clone 150D recognizes only full-length FOXP3, indicating that this antibody recognizes an epitope in the exon 2 region.



Toll Free Phone: 1-877-Bio-Legend (1-877-246-5343)

PH: 858-455-9588 FX: 858-455-9587

www.biolegend.com

For research use only. Not for resale. BioLegend logo and all trademarks are property of BioLegend, Inc. ©2004

World-Class Quality. Superior Customer Support. Outstanding Value.