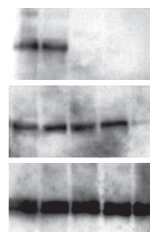


LESS  
SAMPLE.



MORE  
STORY.



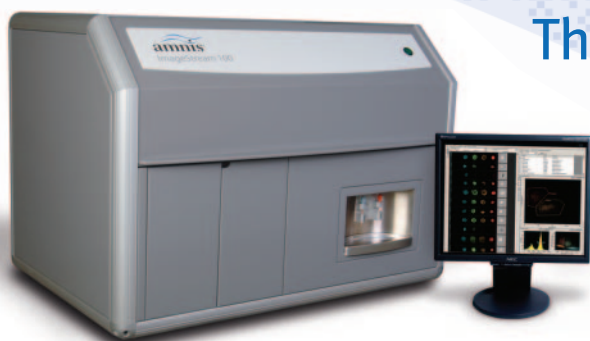
**Sensitive and sensible, BioSource™ ELISA Kits deliver relevant data from as little as 50  $\mu$ l.**

Or fewer than 10,000 cells if you're working with phosphoELISA™ Kits. We offer a wide range of ELISA and phosphoELISA™ Kits for measuring cytokines and phosphorylated proteins—with the exacting sensitivity and reproducibility you need. And faster incubation times. What are you waiting for? See how far your sample can go with BioSource™ ELISA Kits at [www.invitrogen.com/elisa](http://www.invitrogen.com/elisa).



# See more. Know more. (publish more)

## The ImageStream<sup>®</sup> system

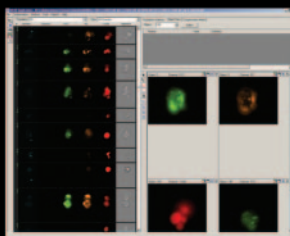


We won't guarantee that every experiment you do with the ImageStream system will turn into a publication, but we will guarantee that when you analyze your cell sample on the ImageStream you will see more -- and know more -- than you ever thought possible. High resolution imaging of tens of thousands of cells gives you the ability to quantitate the amount, location and movement of multiple target molecules in any cell and for entire populations.

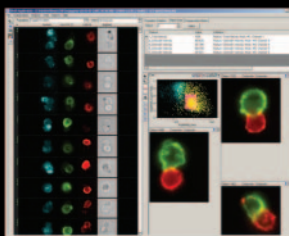
Combining the visual power of microscopy with the statistical power of flow cytometry, the ImageStream system generates six images of every cell -- brightfield, darkfield and up to four fluorescent colors. The cells are imaged directly in flow at up to 15,000 cells per minute.

The variety of applications is enormous: apoptosis, nuclear translocation, co-localization, cell classification, quantitative morphology, phagocytosis, viral infection, FISH in suspension and many more. Measure a wide range of critical cellular events, accurately and reliably, even in rare subpopulations.

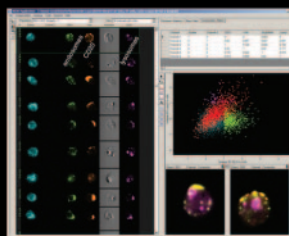
To learn more, visit [www.amnis.com](http://www.amnis.com) or call 800-730-7147 toll-free in the US or 206-374-7000 outside the US.



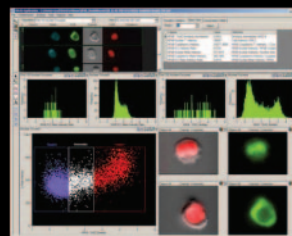
Analyze patterns and locations of gene expression, quantitatively, across entire cell populations



Study the interactions between cells and the molecular activities occurring at cell junctions



Quantitatively characterize intracellular molecular processing including specific organelle involvement



Measure the nuclear translocation of NF-κB and a wide range of similar nuclear factors

The ImageStream System can be applied to many different research problems. Each of the images above shows a screenshot of data generated by the powerful IDEAS<sup>®</sup> image analysis software package, an integral part of the ImageStream system. A more complete introduction to the range of ImageStream applications may be found on the Amnis web site at [www.amnis.com](http://www.amnis.com)

**ImageStream. Think outside the dot.**

  
**amnis**

Amnis<sup>®</sup>, ImageStream<sup>®</sup> and IDEAS<sup>®</sup> are registered trademarks of Amnis Corporation.

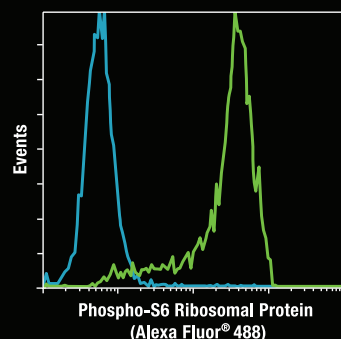
# Alexa Fluor® Conjugated Antibodies for the Study of Intracellular Signaling

...from Cell Signaling Technology

## S6 and Translation

Phospho-S6 Ribosomal Protein (Ser235/236) (2F9)

Rabbit mAb (Alexa Fluor® 488 Conjugate) #4854

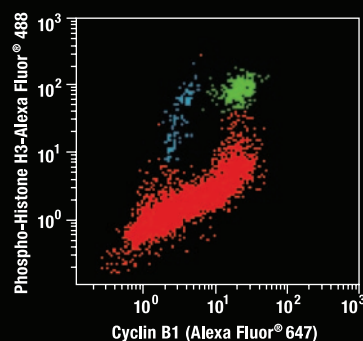


Flow cytometric analysis of Jurkat cells, untreated (green), or LY294002, wortmannin and U0126-treated (blue), using #4854.

## Mitotic Marker: Phospho-Histone H3

Phospho-Histone H3 (Ser10) (Alexa Fluor® 488 Conjugate) #9708

Cyclin B1 (V152) Mouse mAb (Alexa Fluor® 647 Conjugate) #4118

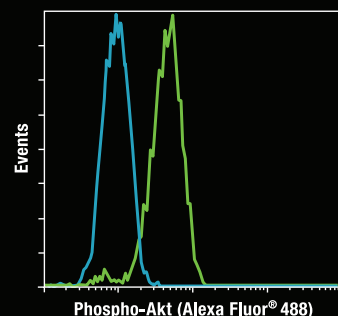


Two-color flow cytometric analysis of asynchronous Jurkat cells, using #9708 and #4118. Cells represented in green are positive for cyclin B1 and phospho-histone H3, while cells represented in blue are positive for phospho-histone H3 and negative for cyclin B1. Both cell populations (green and blue) correspond to cells undergoing mitosis.

## Akt and Survival

Phospho-Akt (Ser473) (193H12) Rabbit mAb

(Alexa Fluor® 488 Conjugate) #2336



Flow cytometric analysis of Jurkat cells, untreated (green) or LY294002 and wortmannin treated (blue), using #2336.



Cell Signaling

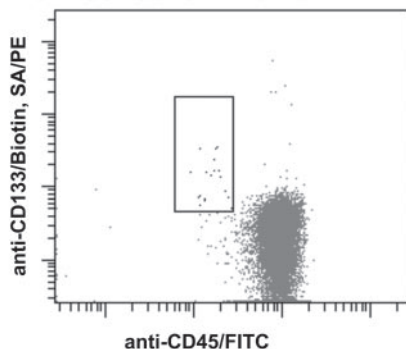
TECHNOLOGY®

[www.cellsignal.com](http://www.cellsignal.com)

# Help Your Stem Cell Research Bloom

anti-CD133

CD133<sup>+</sup> Cells in Human PBL



Stem Cell mAbs

CD34	CD38	CD44	CD45
CD56	CD117	CD122	CD133

Check out our full line of Antibodies and Recombinant Proteins for Human Immunology Research at [www.ancell.com](http://www.ancell.com).



Human Immunology Research Products

## Ancell Corporation

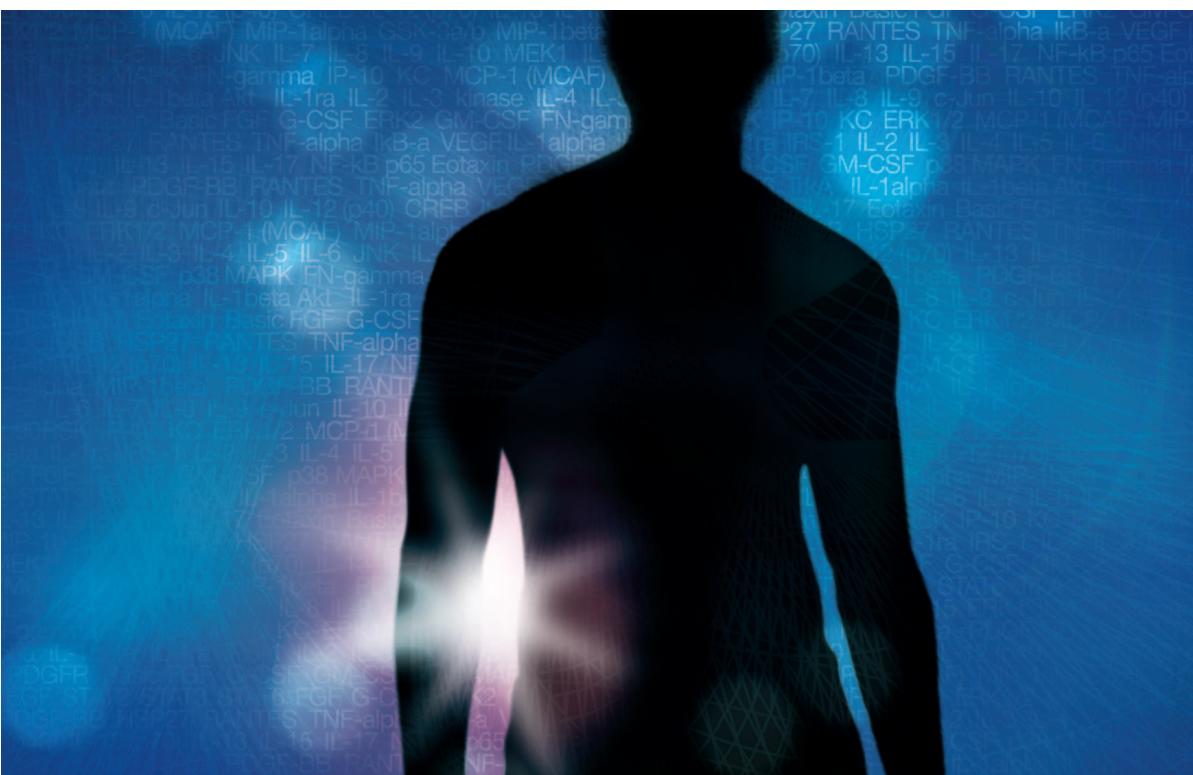
243 Third Street North ■ P.O. Box 87 ■ Bayport, MN 55003 USA  
Toll-Free: 800-374-9523 Tel: 651-439-0835 Fax: 651-439-1940  
[ancell@ancell.com](mailto:ancell@ancell.com) ■ [www.ancell.com](http://www.ancell.com)

**Europe:** Ansell Europe c/o Alexis Corporation  
Industriestrasse ■ 17 Postfach ■ CH-4415 Lausen, Switzerland  
Tel: +41 61 926 89 70 Fax: +41 61 926 89 79  
[alexis-ch@alexis-corp.com](mailto:alexis-ch@alexis-corp.com) ■ [www.alexis-corp.com](http://www.alexis-corp.com)

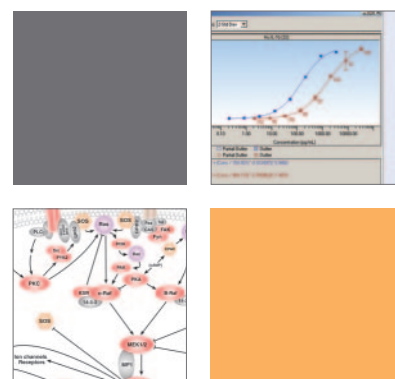
**Japan:** Cosmo Bio Co., Ltd ■ Tokyo  
Tel: (81) 03-5632-9605 Fax: (81) 03-5632-9614  
[www.globe.or.jp/cosmobio/](http://www.globe.or.jp/cosmobio/)

**International Distributors:** **Austria:** EUBIO (01) 895 0145 **Australia:** Immuno Diagnostics 612 9519 9300 **Bangladesh:** FUTURE BUSINESS VISION (012) 863 1173  
**Belgium:** 10 P's BVBA 03 466 04 20 **Canada:** ID LABS inc. 800-463-4782 or Fax (519) 434-2639 **MEDICORP INC.** 514-733-1900 or Fax 514-733-1212  
**Czech Republic:** GENETICA S.R.O. (02) 7270 1055 **Denmark:** MEDINOVA SCIENTIFIC AS 039 56 2000 **Europe:** ANCELL EUROPE c/o ALEXIS CORPORATION +41 61 926 89 70  
**Finland:** NUPPULINNAN LABORATORIOPALVELU OY (09) 27940200 **France:** COVALAB +33 437 654 2300/ COGER S.A. (01) 45 33 67 17  
**Germany:** AXXORA DEUTSCHLAND GmbH +49 6401 90077 **Greece:** BALCAN-MED (1) 8641714 **SB BIOTECHNOLOGY SUPPLIERS A.E.** (210) 823 3373  
**Hong Kong:** BOPPARD (H.K.) CO., LTD 2799 9019 **Hungary:** BIOMARKER LTD 28 419 986 **India:** HYSSEL INDIA Pvt. Ltd. 11 2622 78 01 **Indonesia:** ITS INDONESIA (021) 451 6222  
**Ireland:** ALPHA TECHNOLOGIES LTD. 045 865 440 **Israel:** ALMOG DIAGNOSTIC & MEDICAL EQUIPMENT LTD. (03) 977 3390 **Italy:** VINCI-BIOCHEM 0571 568147  
**Japan:** COSMO BIO CO., LTD (81) 03-5632-9605 **IWAI Chemicals Co., Ltd.,** (81) 03-3255-2781 **Malaysia:** INTERSCIENCE SDN BHD (03) 5740 9888  
**New Zealand:** SAPPHIRE BIOSCIENCE PTY LTD 02 9698 2022 **Norway:** AH DIAGNOSTICS AS (23) 23 32 60 **Pakistan:** THE WORLDWIDE SCIENTIFIC (0)42 755 2355  
**Poland:** BIOMIBO (022) 872 07 97 **Portugal:** BAPTISTA MARQUES, LDA (21) 722 06 60 **PR China:** Dakewe Biotech Co. +86 755 26412280 **Romania:** MEDIST SA (21) 411 5003  
**Russia:** CHIMMED INC. (095) 728 4192 **Singapore:** ITS SCIENCE & MEDICAL PTE. LTD. (06) 273 0898 **South Korea:** CORNEL BIOTECH CORP. 82 2 555 0094  
**ResearchNET Inc.** 82-2-572-5430 **Spain:** GRUPO TAPER S.A. (91) 484 1960 **Sweden:** KELAB 031 125160 **Switzerland:** ALEXIS CORPORATION +41 61 926 89 89  
**Taiwan:** GenHot Laboratories Inc. 886-2-7927398 **Thailand:** ITS THAILAND CO. LTD. (02) 308 0611 **The Netherlands:** 10 P's 076 542 51 84  
**Turkey:** BioGen 90 212 588 23 55 **TOKRA MEDICAL LTD.** (312) 395 60 09 **UK and Republic of Ireland:** AXXORA (UK) LTD. +44 (0) 1949 836111





IL-1β, IL-1ra, IL-2, IL-3, IL-4, IL-5, IL-6, IL-7, IL-8, IL-9, IL-10, IL-11, IL-12 (p70), IL-13, IL-15, IL-17, IL-18, IL-19, IL-20, IL-21, IL-22, IL-23, IL-24, IL-25, IL-26, IL-27, IL-28, IL-29, IL-30, IL-31, IL-32, IL-33, IL-34, IL-35, IL-36, IL-37, IL-38, IL-39, IL-40, IL-41, IL-42, IL-43, IL-44, IL-45, IL-46, IL-47, IL-48, IL-49, IL-50, IL-51, IL-52, IL-53, IL-54, IL-55, IL-56, IL-57, IL-58, IL-59, IL-60, IL-61, IL-62, IL-63, IL-64, IL-65, IL-66, IL-67, IL-68, IL-69, IL-70, IL-71, IL-72, IL-73, IL-74, IL-75, IL-76, IL-77, IL-78, IL-79, IL-80, IL-81, IL-82, IL-83, IL-84, IL-85, IL-86, IL-87, IL-88, IL-89, IL-90, IL-91, IL-92, IL-93, IL-94, IL-95, IL-96, IL-97, IL-98, IL-99, IL-100, IL-101, IL-102, IL-103, IL-104, IL-105, IL-106, IL-107, IL-108, IL-109, IL-110, IL-111, IL-112, IL-113, IL-114, IL-115, IL-116, IL-117, IL-118, IL-119, IL-120, IL-121, IL-122, IL-123, IL-124, IL-125, IL-126, IL-127, IL-128, IL-129, IL-130, IL-131, IL-132, IL-133, IL-134, IL-135, IL-136, IL-137, IL-138, IL-139, IL-140, IL-141, IL-142, IL-143, IL-144, IL-145, IL-146, IL-147, IL-148, IL-149, IL-150, IL-151, IL-152, IL-153, IL-154, IL-155, IL-156, IL-157, IL-158, IL-159, IL-160, IL-161, IL-162, IL-163, IL-164, IL-165, IL-166, IL-167, IL-168, IL-169, IL-170, IL-171, IL-172, IL-173, IL-174, IL-175, IL-176, IL-177, IL-178, IL-179, IL-180, IL-181, IL-182, IL-183, IL-184, IL-185, IL-186, IL-187, IL-188, IL-189, IL-190, IL-191, IL-192, IL-193, IL-194, IL-195, IL-196, IL-197, IL-198, IL-199, IL-200, IL-201, IL-202, IL-203, IL-204, IL-205, IL-206, IL-207, IL-208, IL-209, IL-210, IL-211, IL-212, IL-213, IL-214, IL-215, IL-216, IL-217, IL-218, IL-219, IL-220, IL-221, IL-222, IL-223, IL-224, IL-225, IL-226, IL-227, IL-228, IL-229, IL-230, IL-231, IL-232, IL-233, IL-234, IL-235, IL-236, IL-237, IL-238, IL-239, IL-240, IL-241, IL-242, IL-243, IL-244, IL-245, IL-246, IL-247, IL-248, IL-249, IL-250, IL-251, IL-252, IL-253, IL-254, IL-255, IL-256, IL-257, IL-258, IL-259, IL-260, IL-261, IL-262, IL-263, IL-264, IL-265, IL-266, IL-267, IL-268, IL-269, IL-270, IL-271, IL-272, IL-273, IL-274, IL-275, IL-276, IL-277, IL-278, IL-279, IL-280, IL-281, IL-282, IL-283, IL-284, IL-285, IL-286, IL-287, IL-288, IL-289, IL-290, IL-291, IL-292, IL-293, IL-294, IL-295, IL-296, IL-297, IL-298, IL-299, IL-300, IL-301, IL-302, IL-303, IL-304, IL-305, IL-306, IL-307, IL-308, IL-309, IL-310, IL-311, IL-312, IL-313, IL-314, IL-315, IL-316, IL-317, IL-318, IL-319, IL-320, IL-321, IL-322, IL-323, IL-324, IL-325, IL-326, IL-327, IL-328, IL-329, IL-330, IL-331, IL-332, IL-333, IL-334, IL-335, IL-336, IL-337, IL-338, IL-339, IL-340, IL-341, IL-342, IL-343, IL-344, IL-345, IL-346, IL-347, IL-348, IL-349, IL-350, IL-351, IL-352, IL-353, IL-354, IL-355, IL-356, IL-357, IL-358, IL-359, IL-360, IL-361, IL-362, IL-363, IL-364, IL-365, IL-366, IL-367, IL-368, IL-369, IL-370, IL-371, IL-372, IL-373, IL-374, IL-375, IL-376, IL-377, IL-378, IL-379, IL-380, IL-381, IL-382, IL-383, IL-384, IL-385, IL-386, IL-387, IL-388, IL-389, IL-390, IL-391, IL-392, IL-393, IL-394, IL-395, IL-396, IL-397, IL-398, IL-399, IL-400, IL-401, IL-402, IL-403, IL-404, IL-405, IL-406, IL-407, IL-408, IL-409, IL-410, IL-411, IL-412, IL-413, IL-414, IL-415, IL-416, IL-417, IL-418, IL-419, IL-420, IL-421, IL-422, IL-423, IL-424, IL-425, IL-426, IL-427, IL-428, IL-429, IL-430, IL-431, IL-432, IL-433, IL-434, IL-435, IL-436, IL-437, IL-438, IL-439, IL-440, IL-441, IL-442, IL-443, IL-444, IL-445, IL-446, IL-447, IL-448, IL-449, IL-450, IL-451, IL-452, IL-453, IL-454, IL-455, IL-456, IL-457, IL-458, IL-459, IL-460, IL-461, IL-462, IL-463, IL-464, IL-465, IL-466, IL-467, IL-468, IL-469, IL-470, IL-471, IL-472, IL-473, IL-474, IL-475, IL-476, IL-477, IL-478, IL-479, IL-480, IL-481, IL-482, IL-483, IL-484, IL-485, IL-486, IL-487, IL-488, IL-489, IL-490, IL-491, IL-492, IL-493, IL-494, IL-495, IL-496, IL-497, IL-498, IL-499, IL-500, IL-501, IL-502, IL-503, IL-504, IL-505, IL-506, IL-507, IL-508, IL-509, IL-510, IL-511, IL-512, IL-513, IL-514, IL-515, IL-516, IL-517, IL-518, IL-519, IL-520, IL-521, IL-522, IL-523, IL-524, IL-525, IL-526, IL-527, IL-528, IL-529, IL-530, IL-531, IL-532, IL-533, IL-534, IL-535, IL-536, IL-537, IL-538, IL-539, IL-540, IL-541, IL-542, IL-543, IL-544, IL-545, IL-546, IL-547, IL-548, IL-549, IL-550, IL-551, IL-552, IL-553, IL-554, IL-555, IL-556, IL-557, IL-558, IL-559, IL-560, IL-561, IL-562, IL-563, IL-564, IL-565, IL-566, IL-567, IL-568, IL-569, IL-570, IL-571, IL-572, IL-573, IL-574, IL-575, IL-576, IL-577, IL-578, IL-579, IL-580, IL-581, IL-582, IL-583, IL-584, IL-585, IL-586, IL-587, IL-588, IL-589, IL-590, IL-591, IL-592, IL-593, IL-594, IL-595, IL-596, IL-597, IL-598, IL-599, IL-600, IL-601, IL-602, IL-603, IL-604, IL-605, IL-606, IL-607, IL-608, IL-609, IL-610, IL-611, IL-612, IL-613, IL-614, IL-615, IL-616, IL-617, IL-618, IL-619, IL-620, IL-621, IL-622, IL-623, IL-624, IL-625, IL-626, IL-627, IL-628, IL-629, IL-630, IL-631, IL-632, IL-633, IL-634, IL-635, IL-636, IL-637, IL-638, IL-639, IL-640, IL-641, IL-642, IL-643, IL-644, IL-645, IL-646, IL-647, IL-648, IL-649, IL-650, IL-651, IL-652, IL-653, IL-654, IL-655, IL-656, IL-657, IL-658, IL-659, IL-660, IL-661, IL-662, IL-663, IL-664, IL-665, IL-666, IL-667, IL-668, IL-669, IL-670, IL-671, IL-672, IL-673, IL-674, IL-675, IL-676, IL-677, IL-678, IL-679, IL-680, IL-681, IL-682, IL-683, IL-684, IL-685, IL-686, IL-687, IL-688, IL-689, IL-690, IL-691, IL-692, IL-693, IL-694, IL-695, IL-696, IL-697, IL-698, IL-699, IL-700, IL-701, IL-702, IL-703, IL-704, IL-705, IL-706, IL-707, IL-708, IL-709, IL-710, IL-711, IL-712, IL-713, IL-714, IL-715, IL-716, IL-717, IL-718, IL-719, IL-720, IL-721, IL-722, IL-723, IL-724, IL-725, IL-726, IL-727, IL-728, IL-729, IL-730, IL-731, IL-732, IL-733, IL-734, IL-735, IL-736, IL-737, IL-738, IL-739, IL-740, IL-741, IL-742, IL-743, IL-744, IL-745, IL-746, IL-747, IL-748, IL-749, IL-750, IL-751, IL-752, IL-753, IL-754, IL-755, IL-756, IL-757, IL-758, IL-759, IL-760, IL-761, IL-762, IL-763, IL-764, IL-765, IL-766, IL-767, IL-768, IL-769, IL-770, IL-771, IL-772, IL-773, IL-774, IL-775, IL-776, IL-777, IL-778, IL-779, IL-780, IL-781, IL-782, IL-783, IL-784, IL-785, IL-786, IL-787, IL-788, IL-789, IL-790, IL-791, IL-792, IL-793, IL-794, IL-795, IL-796, IL-797, IL-798, IL-799, IL-800, IL-801, IL-802, IL-803, IL-804, IL-805, IL-806, IL-807, IL-808, IL-809, IL-810, IL-811, IL-812, IL-813, IL-814, IL-815, IL-816, IL-817, IL-818, IL-819, IL-820, IL-821, IL-822, IL-823, IL-824, IL-825, IL-826, IL-827, IL-828, IL-829, IL-830, IL-831, IL-832, IL-833, IL-834, IL-835, IL-836, IL-837, IL-838, IL-839, IL-840, IL-841, IL-842, IL-843, IL-844, IL-845, IL-846, IL-847, IL-848, IL-849, IL-850, IL-851, IL-852, IL-853, IL-854, IL-855, IL-856, IL-857, IL-858, IL-859, IL-860, IL-861, IL-862, IL-863, IL-864, IL-865, IL-866, IL-867, IL-868, IL-869, IL-870, IL-871, IL-872, IL-873, IL-874, IL-875, IL-876, IL-877, IL-878, IL-879, IL-880, IL-881, IL-882, IL-883, IL-884, IL-885, IL-886, IL-887, IL-888, IL-889, IL-890, IL-891, IL-892, IL-893, IL-894, IL-895, IL-896, IL-897, IL-898, IL-899, IL-900, IL-901, IL-902, IL-903, IL-904, IL-905, IL-906, IL-907, IL-908, IL-909, IL-910, IL-911, IL-912, IL-913, IL-914, IL-915, IL-916, IL-917, IL-918, IL-919, IL-920, IL-921, IL-922, IL-923, IL-924, IL-925, IL-926, IL-927, IL-928, IL-929, IL-930, IL-931, IL-932, IL-933, IL-934, IL-935, IL-936, IL-937, IL-938, IL-939, IL-940, IL-941, IL-942, IL-943, IL-944, IL-945, IL-946, IL-947, IL-948, IL-949, IL-950, IL-951, IL-952, IL-953, IL-954, IL-955, IL-956, IL-957, IL-958, IL-959, IL-960, IL-961, IL-962, IL-963, IL-964, IL-965, IL-966, IL-967, IL-968, IL-969, IL-970, IL-971, IL-972, IL-973, IL-974, IL-975, IL-976, IL-977, IL-978, IL-979, IL-980, IL-981, IL-982, IL-983, IL-984, IL-985, IL-986, IL-987, IL-988, IL-989, IL-990, IL-991, IL-992, IL-993, IL-994, IL-995, IL-996, IL-997, IL-998, IL-999, IL-1000.



## Bio-Plex, Leading Life Science Discovery

*Advance your understanding of cell biology and mechanisms of disease with the integrated Bio-Plex system*

Bio-Plex is the most widely cited multiplex assay platform with research applications in Alzheimer's and Parkinson's disease, diabetes, obesity, cancer, asthma, cystic fibrosis, autoimmune disease, viral infections, and vaccine development.

The Bio-Plex system enables you to quantitate up to 100 different analytes in one sample with unsurpassed sensitivity, precision, and accuracy, giving you the power to understand complex relationships between proteins in normal and disease states.

For more information, visit us on the Web at [www.bio-rad.com/bio-plex/](http://www.bio-rad.com/bio-plex/)



The objective of this Foundation is to encourage progress in allergy research through the recognition of an outstanding non-established investigator by means of an

## INTERNATIONAL AWARD of USD 50 000

This Award, characterized as a personal prize, is offered annually to a scientist, **less than 40 years of age**, who has made outstanding contributions to the field of allergy through creative and independent research efforts. The scientific achievements of the candidate should have contributed to a better understanding of allergic inflammation, as well as to improved diagnostic procedures and to improved treatment, resulting in optimal patient management.

### Subject for 2007 – “Impact of allergy – from mechanisms to treatment”

Selection of the Award recipient will be made by an International Scientific Committee, made up of internationally recognized senior scientists, today chaired by Prof Paul O’Byrne, Firestone Institute for Respiratory Health, St. Joseph’s Healthcare and McMaster University, Hamilton, Ontario, Canada. The judgement of the International Scientific Committee will be based on the submission of an unpublished review article, describing the research achievements and research goals of the candidate. The contribution of the recipient of the International Award and Honorable Mention will be published.

For further information and to obtain **application forms**, please, visit PhARF at [www.phadia.com](http://www.phadia.com) or contact the: *PhARF Office*, attn: Marie Lantz, c/o Phadia AB, P.O. Box 6460, F35-4, SE-751 37 Uppsala, Sweden – or e-mail: [marie.lantz@phadia.com](mailto:marie.lantz@phadia.com)

**The application must be received no later than March 12, 2007**

**- 40 years of IgE and 20 years of PhARF -**

# IMMUNOLOGY



THE JOURNAL OF

## *The JI Online!*

*The Journal of Immunology is available online at:*

**[www.jimmunol.org](http://www.jimmunol.org)**

All Table of Contents, abstracts, and full-text of articles published 1998 to one year ago are available free to all viewers. Subscribers may also access the full text of articles from 1980 to the present time.

To activate your subscription and gain access, follow the complete instructions on the website by clicking on **Subscriptions**. Additional information including Editorial Policies of *The JI*, how to become a reviewer, information for authors, and purchasing a subscription can also be accessed on the website.





TEXAS A&M

HEALTH SCIENCE CENTER  
COLLEGE OF MEDICINE

## IMMUNOLOGY FACULTY POSITION

The Department of Microbial and Molecular Pathogenesis is recruiting a tenure track immunologist at the Assistant Professor level. Investigators whose research complements existing strengths in host-pathogen interactions and vaccinology are encouraged to apply. State-of-the-art animal care, biocontainment (BL-3), and other core facilities are available within the department and elsewhere on campus. Candidates are expected to establish an independent, extramurally-funded research program, to teach immunology to professional and graduate students, and to participate in an NIH pre-doctoral training grant in host-pathogen interactions. Numerous opportunities exist for collaborations in basic sciences as well as interdisciplinary programs with the College of Veterinary Medicine and other components of Texas A&M University and the Health Science Center, including the Texas Institute for Genomic Medicine. Appointments are for 12 months with a competitive start-up package and laboratory space. Applicants should provide a CV, a statement of research interests, and have letters submitted by three referees. These materials should be sent online ([dmcmurray@tamu.edu](mailto:dmcmurray@tamu.edu)) and by post to: Prof. David N. McMurray, Search Committee Chair, Dept. of Microbial and Molecular Pathogenesis, College of Medicine, Texas A&M University System Health Science Center, College Station, TX 77843-1114. *The Texas A&M University System Health Science Center is an affirmative action/equal opportunity employer and encourages applications from women and minorities.* For more information, visit our website ([http://medicine.tamhsc.edu/basic\\_sciences/mmp/](http://medicine.tamhsc.edu/basic_sciences/mmp/)).

**Department of Health and Human Services  
National Institutes of Health  
National Institute of Arthritis and Musculoskeletal and Skin Diseases, NIH**

**Health Scientist Administrator, GS-601-13/14/15  
Medical Officer, GS-602-13/14/15  
Extramural Program**

The National Institute of Arthritis and Musculoskeletal and Skin Diseases (NIAMS) is seeking experienced and highly motivated people to work with the Extramural Program (EP) staff to plan and direct the Institute's research programs in the fields of arthritis, muscle biology, bone biology and bone diseases, musculoskeletal diseases, and skin diseases and to provide independent leadership in research of National and international significance. As a Health Science Administrator in the EP at the NIAMS, the selectee will join a team of professionals responsible for advancing basic, translational and clinical research, research training, and information programs on many of the more debilitating diseases affecting the American people. Areas of research of interest to the EP include autoimmune and inflammatory systemic rheumatic and skin diseases, biology and molecular pathogenesis of connective tissues and related inheritable diseases, degenerative joint disease, orthopedics, bioengineering and biomechanics, basic bone biology and bone diseases; skin biology and pathophysiology; muscle biology and muscle diseases. Candidates with specific experience in one or more of the above listed scientific areas will compete well for these positions.

There are multiple Health Scientist Administrator and Medical Officer vacancies open within the Extramural Program in Bethesda, Maryland. Benefits of the positions include: working in a dynamic research organization and challenging environment; significant involvement in long-range scientific planning and priority-setting; and on-going opportunities for professional development through seminars, formal coursework, and attendance at National meetings.

Salary is commensurate with qualifications and professional experience, and it includes a full Federal benefits package (which includes retirement, health, life and long-term care insurance, Thrift Savings Plan participation, etc.). Physicians may also be eligible to receive a Physicians Comparability Allowance up to \$30k per year, depending on qualifications/experience.

For qualifications required, evaluation criteria, and application instructions, view the vacancy announcements at: <http://www.jobs.nih.gov/sciencejobs.asp>. Announcement Number: **NIAMS-06-139075** for the GS-13/14 Health Scientist Administrator and **NIAMS-06-144306** for the GS-15 level Health Scientist Administrator. Announcement Number: **NIAMS-06-145751** for the GS-13/14 Medical Officer and **NIAMS-06-145533** for the GS-15 level Medical Officer. For additional information on application procedures, call Lauren Carroll Tedesco at 301-594-2288. Applications must be received by **October 31, 2006**.

National Institute of Arthritis and Musculoskeletal and Skin Diseases website:  
<http://www.niams.nih.gov/>

**The DHHS and NIH are Equal Opportunity Employers**

### Assistant Professor (tenure-track), Molecular Imaging and Immunology

The Crump Institute for Molecular Imaging and the Department of Molecular & Medical Pharmacology at UCLA are recruiting a PhD, MD or MD/PhD interested in integrating *in vivo* molecular imaging and immunology. Candidates are expected to have a demonstrated commitment, expertise, and experience in both immunology and *in vivo* molecular imaging with PET to build a program for *in vivo* molecular imaging of immune system processes in health and disease.

The Crump Institute is a science and technology institute in the David Geffen School of Medicine at UCLA that focuses on integrating molecular imaging, nanotechnologies and systems biology. The Institute comprises faculty in the areas of molecular imaging employing PET, CT, optical imaging (*in vitro* and *in vivo*) and autoradiography; integrated microfluidics for chemistry and the study of systems biology of disease; and nanotechnology-based approaches for streamlining biological assays.

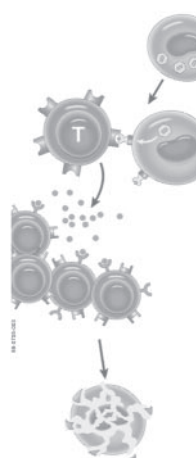
Send curriculum vitae, a two page description of research accomplishments, a two page research plan and 3 letters of recommendation to: *Imaging and Immunology* Search Committee, Crump Institute for Molecular Imaging, Geffen School of Medicine at UCLA, 700 Westwood Plaza, Box 951770, Los Angeles, CA 90095-1770. All materials must be received by December 1, 2006.

The University of California is an Equal Opportunity Employer committed to excellence through diversity. All qualified applicants are encouraged to apply, including minorities and women.

## FOCIS Announces...

**FOCIS**  
Federation of Clinical  
Immunology Societies  
[www.focisnet.org](http://www.focisnet.org)

### The Advanced Course in Basic & Clinical Immunology



- An in-depth introduction to fundamental concepts of immunology
- Emphasis on disease pathogenesis and therapeutic approaches
- Discussion of biomarkers and new technologies

**The Mondrian  
Scottsdale, Arizona  
March 7-11, 2007**

#### Course Directors

Abul K. Abbas, MD, UCSF  
P.J. Utz, MD, Stanford University

*Register Now!* ... course size is limited!

[www.focisnet.org](http://www.focisnet.org)

Registration Deadline: **February 5, 2007**

# IMMUNOLOGY



THE  
JOURNAL  
OF

### *Need to Recruit?*

Recruiting through *The Journal of Immunology* is the most economical way to reach the immunology community without wasting money. Why pay more to reach geologists and physicists when you are seeking immunologists?

A quarter-page advertisement costs \$795.00.

*For further information, contact:*

Steve West

Professional Media Group (PMG)

Tel: (856) 589-5454 ext. 14

[steve@promedgroup.net](mailto:steve@promedgroup.net)

**UNIVERSITY  
of VIRGINIA**  
HEALTH SYSTEM

### ASSISTANT PROFESSOR Rheumatology and Immunology

The University of Virginia is recruiting an Assistant Professor in the Department of Medicine, Division of Rheumatology and Immunology. The candidate should have a background in cellular and molecular immunology, the ability to design and conduct research in animal models of autoimmune diseases, work collaboratively with colleagues and complete research projects in the form of manuscripts.

The candidate must have a Ph.D. or equivalent from an accredited university, with at least 3 years of post-doctoral training in cellular and molecular immunology.

Although the position will remain open until filled, please send a letter of interest and current C.V. with three references by November 15, 2006, for immediate consideration to:

**Shyr-Te Ju, Ph.D.**

**c/o Rob Tharpe**

**P.O. Box 801337**

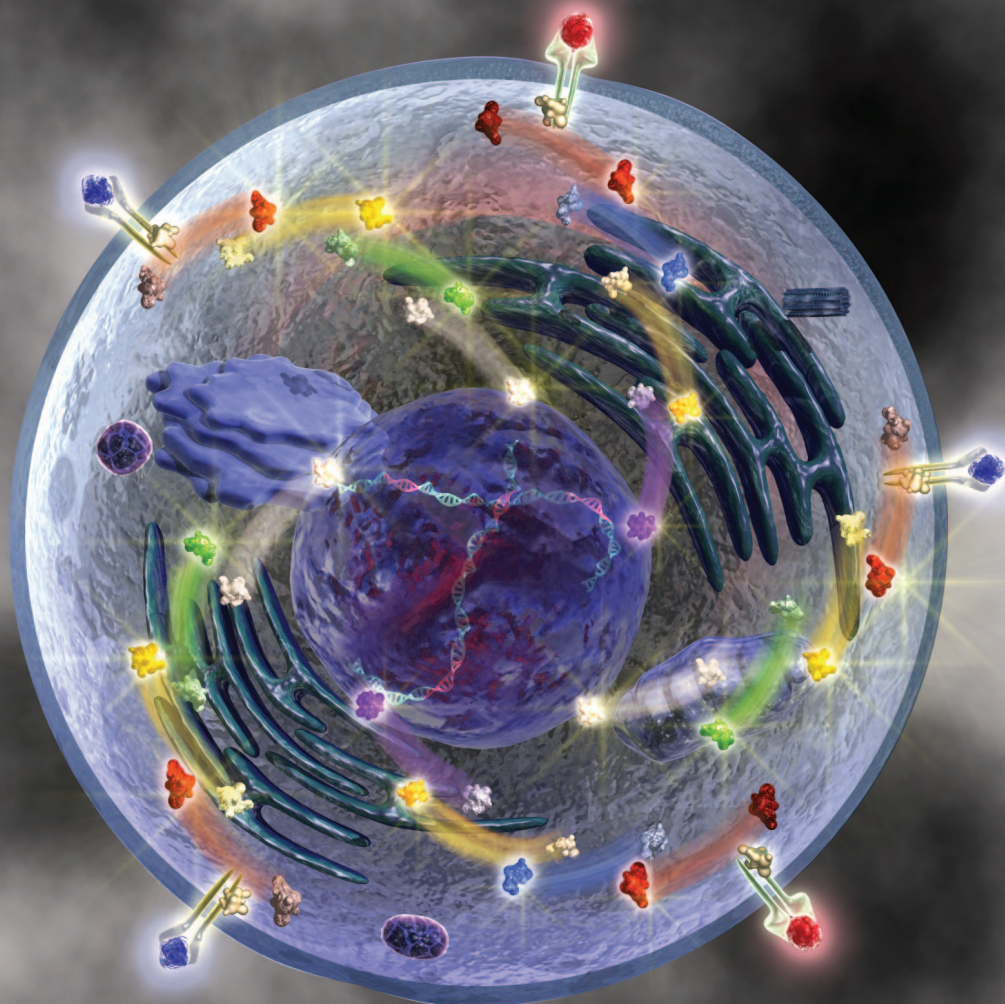
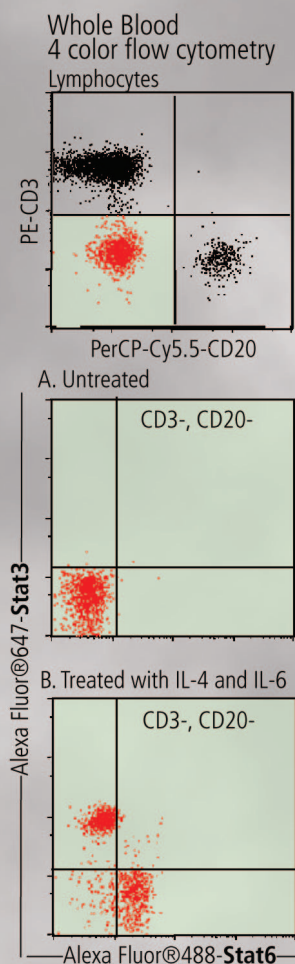
**Charlottesville, VA 22908-1337**

*The University of Virginia is an Equal Opportunity/Affirmative  
Action Employer.*



# BD™ Phosflow

## Phospho-Specific Flow Cytometry Reagents



Helping all people  
live healthy lives

## Analyze Signaling Networks in Single Cells

### BD™ Phosflow Advantages:

- Collect statistically significant data for individual cells
- Analyze the phosphorylation state of multiple proteins simultaneously
- Study rare cell types directly in complex primary samples (ie, whole blood)
- Perform rapid and scalable screens in 96-well plates using BD FACSTM flow cytometers

- Choose validated, directly conjugated cell surface marker antibodies and industry leading flow cytometry instrumentation from one source

For a list of BD™ Phosflow reagents, protocols, and sample data visit [bdbiosciences.com/phosflow](http://bdbiosciences.com/phosflow)

Shop online at [shop.bdbiosciences.com](http://shop.bdbiosciences.com)

BD flow cytometers are class I (1) laser products  
For Research Use Only. Not for use in diagnostic or therapeutic procedures. Not for resale.  
BD, BD Logo and all other trademarks are the property of Becton, Dickinson and Company. ©2006 BD  
23-8907-00

**BD Biosciences**  
2350 Qume Drive  
San Jose, CA 95131  
[bdbiosciences.com](http://bdbiosciences.com)