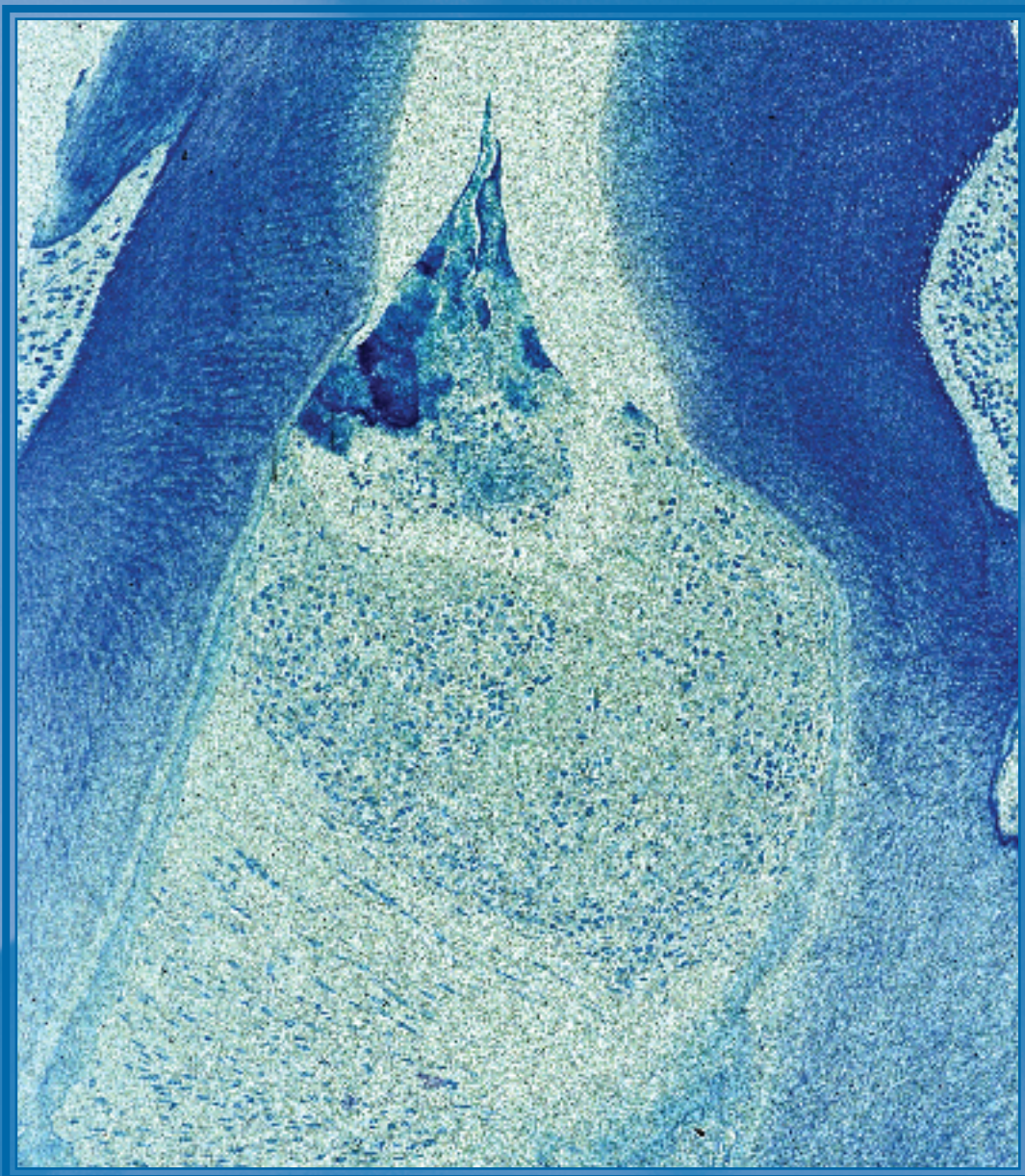


www.jimmunol.org

Volume 180 / No. 1 / January 1, 2008

IMMUNOLOGY

THE JOURNAL OF





AAI Courses in Immunology

The American Association of Immunologists

2008 Introductory Course in Immunology

June 20-26, 2008

The University of Pennsylvania, Philadelphia, PA

Don't miss the most comprehensive introduction to immunology available!

An intensive course taught by world-renowned teachers and researchers in immunology. This two-part course provides a comprehensive overview of the basics of immunology for students new to the discipline or seeking more information to complement general biology or science training. Upon completion, students will have the tools necessary to understand and discuss current topics and methods in immunology.

Part I (June 20-23) is a comprehensive introduction to the basic principles of immunology and is suitable for students with a general biology background. Part II (June 24-26) is a lecture course covering major areas of immunology and will require an understanding of basic immunology. Parts I and II may be taken independently at the discretion of the student. Registration details to be announced.

Course Director: Terri M. Laufer, M.D., University of Pennsylvania School of Medicine

The American Association of Immunologists

2008 Advanced Course in Immunology

July 19-24, 2008

The University of Minnesota, Minneapolis, MN

This intensive annual course is designed for serious students of immunology. Leading experts will present recent advances in understanding the biology of the immune system and its role in health and disease. This course is directed toward advanced trainees and scientists who wish to expand or update their understanding of the field. This is not an introductory course and attendees will need to have a firm understanding of the principles of immunology. Registration details to be announced.

Course Director: Marc K. Jenkins, Ph.D., University of Minnesota
Course Co-Director: Kristin A. Hogquist, Ph.D., University of Minnesota

FOR MORE INFORMATION VISIT:

www.aai.org/Courses.htm

If you have any questions, contact meetings@aai.org or call 301-634-7178.

Overseas applicants are advised to apply early for visas.

The American Association of Immunologists

FUTURE ANNUAL MEETINGS



EXPERIMENTAL BIOLOGY 2008

Co-Sponsored by AAI and APS, ASBMB, ASPET, ASIP, ASN, AAA

April 5-9 • San Diego, California

IMMUNOLOGY 2009^{TM*}

May 8-12 • Seattle, Washington

IMMUNOLOGY 2010^{TM*}

May 7-11 • Baltimore, Maryland

IMMUNOLOGY 2011TM

TBD

IMMUNOLOGY 2012^{TM*}

May 4-8 • Boston, Massachusetts

* Represents an AAI “stand-alone” (all immunology) meeting

SPEND MORE TIME ON SCIENCE AND LESS TIME ONLINE

You have better things to do than spend hours submitting and tracking manuscripts.

The JI's new online manuscript submission and peer-review system is designed to make manuscript submission seamless for authors and peer review simple for reviewers.

SUBMIT IN A SNAP!

Try our easy 4-step submission process.

Fast
Efficient
Easy to use

<http://ji.msubmit.net>



Sponsoring a Symposium or Conference...

You can place a quarter-, half-, or full-page advertisement in *The Journal of Immunology* for upcoming symposia or conferences.

It's a great way to spread the word about forthcoming events! You can include important information, such as registration fees, timetables, speakers, and contact information.

For space availability and pricing, please contact Steve West, Professional Media Group (PMG), at 856-795-5777 or steve@promedgroup.net



With support from
 European Union
 Government of France
 Ministry of Research

RESEARCH CONFERENCES

ESF-EMBO Symposium

B Cells 2008: Complexity, Integration and Translation

Hotel Eden Roc, Sant Feliu de Guixols, Spain
16-21 May 2008

Chair: John Gordon, University of Birmingham, UK; Vice-Chair: Rita Corselli, Bambino Gesù Children Hospital, Rome, IT

B CELLS 2008: COMPLEXITY, INTEGRATION & TRANSLATION considers B cells in all their colours. Knowledge of B-cell behaviour is a central Public Health issue; not least in relation to vaccines and therapy. B cells also contribute to autoimmune disease while B-cell tumors constitute the majority of haematological cancers. This meeting will encapsulate the very latest advances in our understanding of B-cell physiology and pathology. The highly integrated, interdisciplinary approach will ensure a broad-ranging, cutting-edge symposium. Participants will engage with the leaders in each of the fields represented during interactive sessions of talks, posters, discussions and social events.

Themes will include: • Theoretical and physical approaches for dissecting complex B-cell phenomena and for validating or adjusting prevalent biological concepts including mathematical and computerized modeling of B cell physiology together with physical considerations of BCR interactions and signals. • Control of gene expression via transcription factors in relation to B-cell differentiation and of normal B-cell regulation by endogenous small inhibitory RNAs and their impact on B-cell disease, predominantly cancer. • Consideration of B-cell dynamics and homeostasis at the molecular, cellular and population levels. • The important newly emerging aspects of B-cell as (non-antibody) effectors: both per se and autocrine. • Translation of the fundamental knowledge on B cell physiology to the treatment of disease. • Exploration of the emerging appreciation of the strong dialogue occurring between Immune & Nervous systems: this providing novel B-cell targets as well as new pathways for modulation in health and disease. • Potential impact of the above on Society with regards the widespread use/abuse of psychotropic drugs where we are beginning to learn of their deleterious consequences on normal B-cell functioning.

Application Form & Programme available from
www.esf.org/conferences/08210

Closing Date for Application **12 February 2008**

European Science Foundation | Research Conferences Unit
 149 avenue Louise | Box 14 | Tour Generali, 13th Floor | Brussels | Belgium
 Tel: +32 (0)2 533 2020 | Fax: +32 (0)2 538 5485
 Email: conferences@esf.org | www.esf.org/conferences



Today's Research:
Tomorrow's Health

April 5–9

CALL FOR LATE-BREAKING ABSTRACTS

Deadline for Submission: Wednesday, February 6, 2008

www.eb2008.org

Sponsors:

AAA

American Association of
Anatomists

AAI

The American Association of
Immunologists

APS

The American Physiological
Society

ASBMB

American Society for
Biochemistry and Molecular
Biology

ASIP

American Society for
Investigative Pathology

ASN

American Society for Nutrition

ASPET

American Society for
Pharmacology and
Experimental Therapeutics

Late-breaking abstracts will be accepted beginning the week of **December 10, 2007. The abstracts will be accepted for poster presentations only and will be scheduled on **Wednesday, April 9, 2008**.**

Late-breaking abstracts will be published online.

Late-breaking abstracts must be submitted online at www.eb2008.org with the \$90 abstract fee by **Wednesday, February 6, 2008.**

Please visit www.eb2008.org for information about the meeting, including late-breaking abstract topic categories, the preliminary program, registration and hotel information. Please contact eb@faseb.org if you have questions.

!!Save Money!!

**Register online by February 6, 2008 and
complete your hotel reservations by March 3, 2008**