

To boldly flow with Qdot® nanocrystals

Now available: Qdot® nanocrystal–conjugated primary antibodies

Researchers today are trying to maximize information from their flow cytometry experiments by looking at more parameters in one sample. Qdot® nanocrystals provide a powerful way to increase your fluor selection from your available excitation sources. Qdot® nanocrystal conjugates will allow you to add 1–6 colors to your data acquisition from a violet laser and, in addition, provide the advantages of brightness and photostability.

The fluorescence properties of Qdot® nanocrystals are different from those of typical dye molecules. Typical fluorescent dyes have excitation and emission spectra with relatively small Stokes shifts, which means that the optimal excitation wavelength is close to the emission peak. Qdot® nanocrystals have broad absorbance spectra and are optimally excited by a UV or violet (405–407 nm) laser, although usable excitation can also be obtained with other sources such as the 488 nm laser. Their emission peaks are narrow and symmetrical, and do not change with excitation (Figure 1). Because of their spectral properties, Qdot® nanocrystals are brighter than most common fluor.

Qdot® nanocrystal conjugates may be used in the same way as conventional conjugates. Because staining conditions may vary, reagents should be titrated with samples to obtain optimal staining concentrations. Figure 2 shows typical profiles of human peripheral blood leukocytes (PBLs) stained with Qdot® nanocrystal conjugates specific for CD3, CD4, CD8, and CD14 antigens. The two-color combination was analyzed with <4% compensation between channels. In addition, Qdot® nanocrystals are compatible with common lysing, fixation, and permeabilization reagents, such as Cal-Lyse™ and FIX & PERM®.

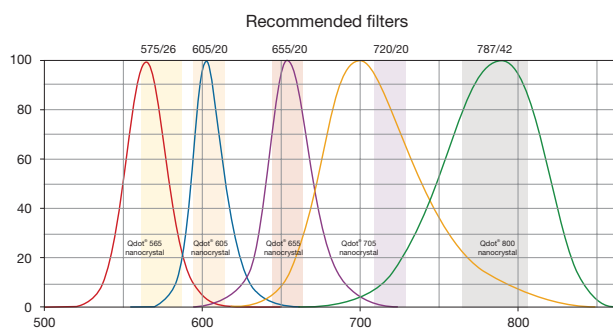


Figure 1—Recommended filter configuration and emission profiles for selected Qdot® nanocrystals. Filter diagrams and emission curves were viewed with the Fluorescence Spectra Viewer (probes.invitrogen.com/resources/spectraviewer/).

Primary antibody conjugates now available

As the exclusive provider of Qdot® nanocrystal technology for life science research, Invitrogen offers a full range of tools, from new primary antibody conjugates to secondary detection reagents, to maximize the use of your flow cytometer by combining Qdot® nanocrystal technology with existing organic fluorophores. For more information on using this new technology in flow cytometry, including detailed protocols and resources, visit www.invitrogen.com/qdotforflow.

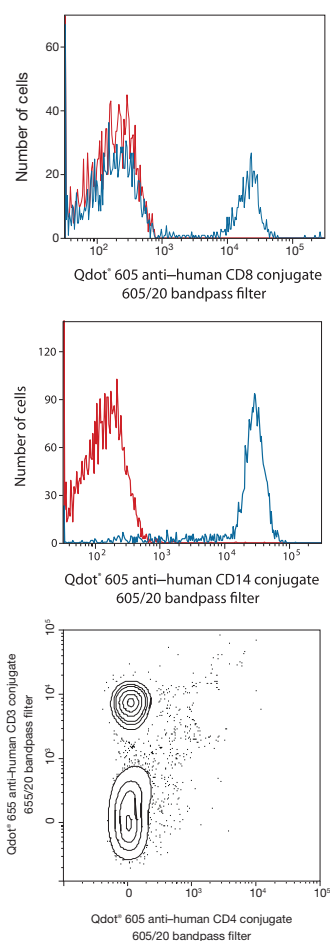


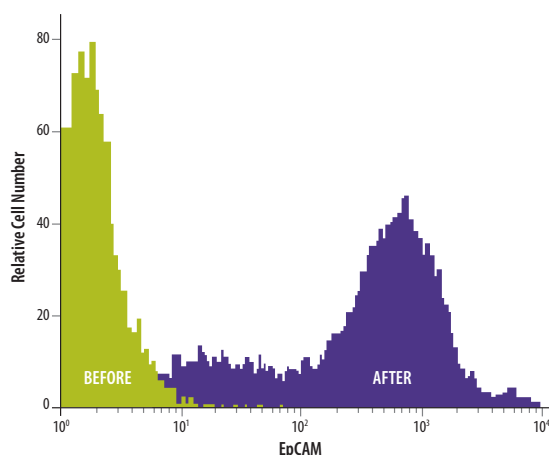
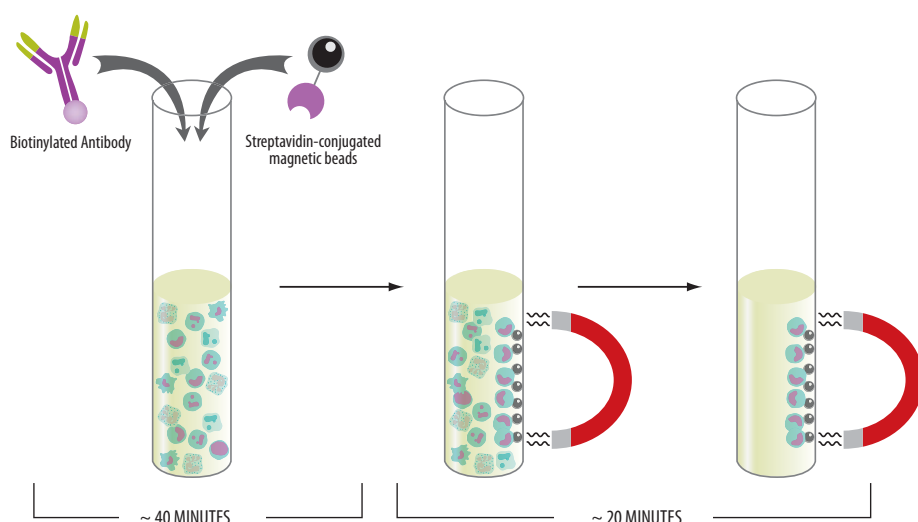
Figure 2—Staining profiles for Qdot® nanocrystal–conjugated antibodies. Human peripheral blood leukocytes were stained with the specified Qdot® conjugates. Samples were analyzed using a BD™ LSR II flow cytometer with 405 nm excitation and the specified emission filters.



R&D Systems **NEW** PlusCelect™ Kits

Positively the BEST in Cell Selection.

- ✓ Positive selection for the isolation of rare cell populations
- ✓ Flexible – compatible with several magnetic systems
- ✓ Selection and detection antibodies included
- ✓ Fast – enrichment in about 1 hour
- ✓ Specific & simple



Kits for these markers are currently available:

- | | | |
|--------------------|----------------------------|---------------------|
| • ACE/CD143 | • CXCR4 | • NCAM-1/CD56 |
| • CCR5 | • E-Cadherin | • PECAM-1/CD31 |
| • CD3 | • Endoglin/CD105 | • VE-Cadherin/CD144 |
| • CD4 | • EpCAM | • VCAM-1/CD106 |
| • CD45 | • Integrin α V/CD51 | • VEGF R2 |
| • E-Selectin/CD62E | • MCAM/CD146 | |

The human EpCAM PlusCelect Kit (Catalog # PLS960) was used to enrich for EpCAM⁺ cells in a culture containing human whole blood cells spiked with MCF-7 human breast cancer cells. Cells were stained with PE-conjugated anti-human EpCAM detection antibody both before (green) and after (purple) selection.

For more information visit our website at
www.RnDSystems.com/go/PlusCelect

For research use only. Not for use in diagnostic procedures.

R&D Systems Tools for Cell Biology Research™

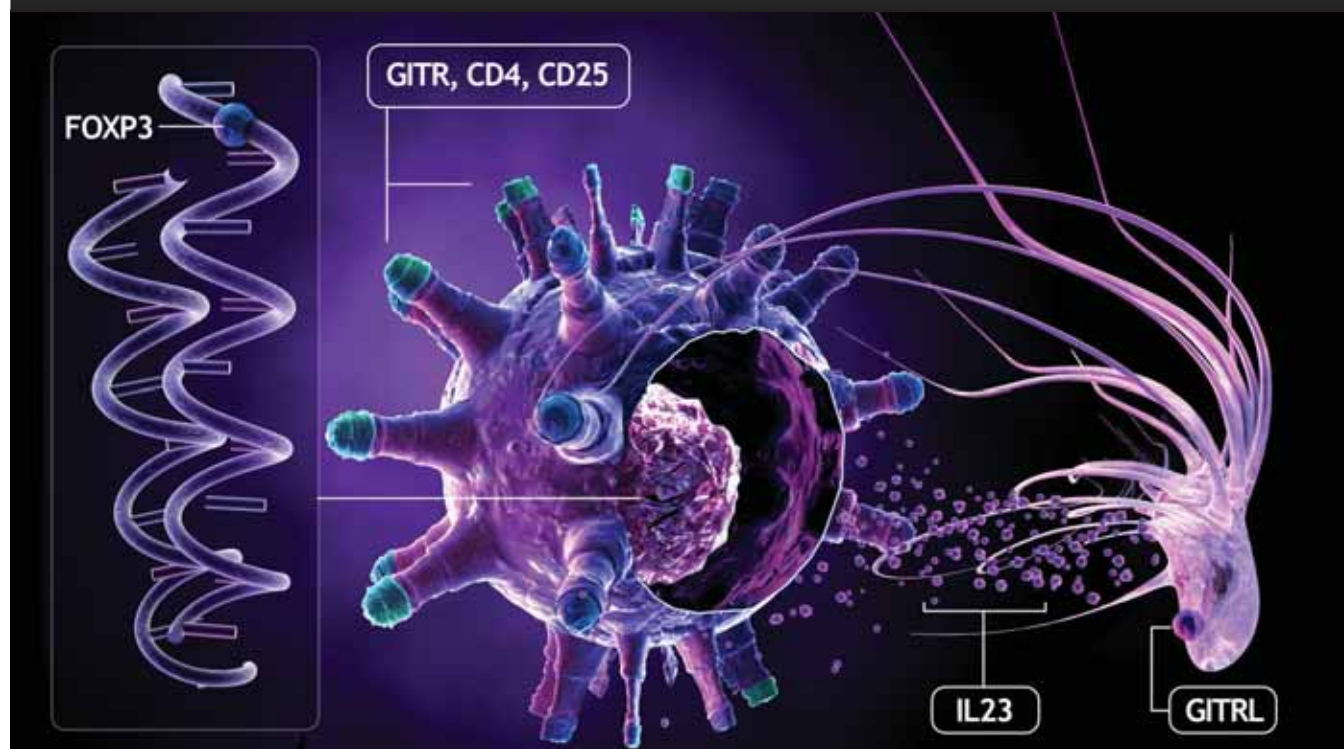
USA & Canada **R&D Systems, Inc.** Tel: (800) 343-7475 info@RnDSystems.com

Europe **R&D Systems Europe, Ltd.** Tel: +44 (0)1235 529449 info@RnDSystems.co.uk

Selection expanding weekly—visit www.RnDSystems.com to sign up for weekly new product updates.



BioLegend's FOXP3 and Treg Reagents



Greater Selection, Reliable Results.

| Anti-Human FOXP3, Clones 259D and 206D | Antibodies to FOXP3 Isoforms | Additional Treg Reagents: |
|--|---|---|
| <p>FOXP3 Reagents/Applications:</p> <ul style="list-style-type: none"> • Anti-Human FOXP3, Clone 259D for Flow Cytometry, IHC, and WB • Anti-Human FOXP3, Clone 206D for Flow Cytometry, IHC, and WB • Anti-Mouse/Rat/Human FOXP3, Clone 150D for Flow Cytometry, IHC, and WB • Anti-Human/Mouse FOXP3, Poly6238 for IHC and WB • FOXP3 Fix/Perm Buffer Set | <p>Clones 259D and 206D recognize two isoforms of FOXP3, and clone 150D recognizes one isoform.</p> | <ul style="list-style-type: none"> Anti-Human GITR, Clone 621 Anti-Mouse GITR, Clone YGITR765 Anti-Human GITR Ligand, Clone EB11-2 Anti-Mouse GITR Ligand, Clone YGL386 Anti-Human CD127 (IL-7Rα), Clone HCD127 Anti-Mouse CD127 (IL-7Rα), Clone SB/199 Anti-Human TSLPR, Clones 1B4 and 1D3 |



Toll Free Phone: 1-877-Bio-Legend (1-877-246-5343)

PH: 858-455-9588 FX: 858-455-9587

www.biolegend.com

For research use only. Not for resale. BioLegend logo and all trademarks are property of BioLegend, Inc. ©2004

World-Class Quality. Superior Customer Support. Outstanding Value.

Now more than ever.



MoFlo™ XDP Cell Sorter



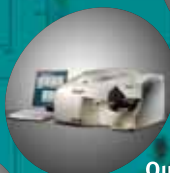
CyAn™ ADP Analyzer



FC 500 MPL Analyzer



EPICS™ XL-MCL™ Analyzer



Quanta™ SC MPL Analyzer



Vi-CELL® Cell Viability Analyzer



Z™ Series Coulter Counter



Think Beckman Coulter for flow cytometry.

No one can meet your diverse cell analysis needs like Beckman Coulter. For flexibility and reliability, depend on our expanding family of flow cytometry solutions that range from affordable analyzers to a cell sorter that sets the standard. You can always count on us—whether you're looking for instrumentation, reagents for your research and clinical needs, or the security of Beckman Coulter's global network of service and support. Discover all you need all in one place at www.beckmancoulter.com/flowcytometry



Genomics Proteomics **Cell Analysis** Centrifugation Lab Tools Particle Characterization Bioseparation Lab Automation

Simplify • Automate • Innovate

"My goal is to understand biology and technology, and marry the two."

Maurice O'Gorman, PhD, MSc, MBA Professor, Pathology and Pediatrics

Read about what inspires
Dr. O'Gorman's research
at Children's Memorial Hospital:
bdbiosciences.com/ogorman



Helping all people
live healthy lives

BD supports researchers as they make exciting new connections—offering a comprehensive flow cytometry portfolio including instrumentation, reagents, and collaborative services.