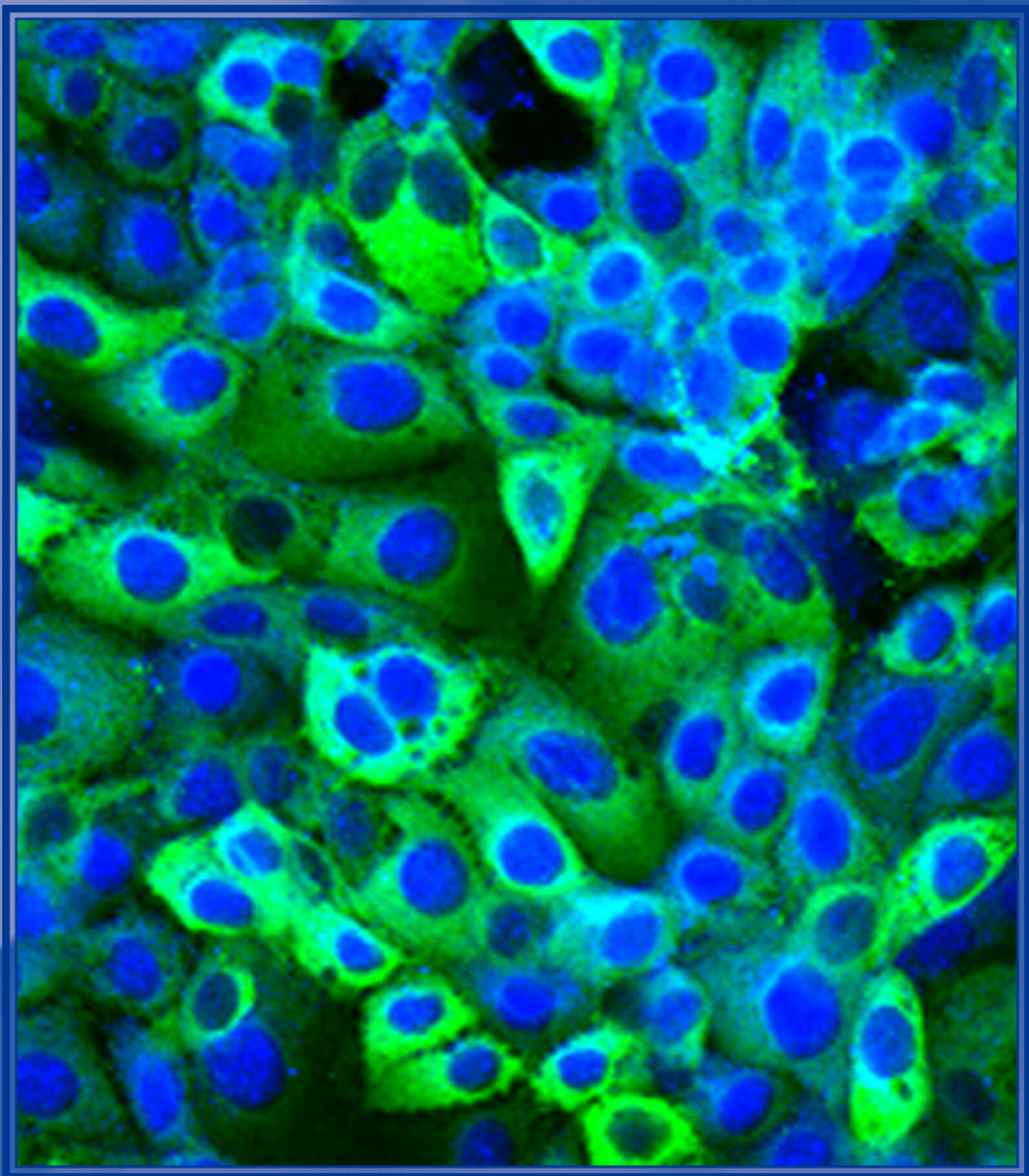


www.jimmunol.org

Volume 180 / No. 11 / June 1, 2008

# IMMUNOLOGY

THE JOURNAL OF





# The American Association of Immunologists 2008 Introductory Course in Immunology

June 20-26, 2008

The University of Pennsylvania, Philadelphia, PA

Course Director: Terri M. Laufer, M.D., University of Pennsylvania School of Medicine

## *Don't miss the most comprehensive introduction to immunology available!*

An intensive course taught by world-renowned teachers and researchers in immunology, this two-part course provides a comprehensive overview of the basics of immunology for students new to the discipline or seeking more information to complement general biology or science training. Upon completion students will have the tools necessary to understand and discuss current topics and methods in immunology.

**Part I (June 20-23)** is a comprehensive introduction to the basic principles of immunology and is suitable for students with a general biology background. **Part II (June 24-26)** is a lecture course covering major areas of immunology and will require an understanding of basic immunology. Parts I and II may be taken independently at the discretion of the student. Registration Deadline: **June 4, 2008**.

Minority Access to Research Careers (MARC) travel awards\* are available to US Citizens and permanent residents.

## Faculty

- **Terri M. Laufer**, University of Pennsylvania School of Medicine, *Welcome; Introduction to the immune system; Introduction to the MHC*
- **Kathleen E. Sullivan**, Children's Hospital of Philadelphia, *Introduction to innate immunity*
- **Judith A. Owen**, Haverford College, *Introduction to adaptive immunity*
- **Moshe J. Sadofsky**, Albert Einstein College of Medicine, *VDJ recombination*
- **John G. Monroe**, Genentech, Inc., *B cell development*
- **Laurence C. Eisenlohr**, Jefferson Medical College, *Antigen processing and presentation*
- **David L. Wiest**, Fox Chase Cancer Center, *T cell development*
- **Gary A. Koretzky**, University of Pennsylvania School of Medicine, *Signaling in the immune system*
- **A. Karolina Palucka**, Baylor Institute of Biomedical Studies, *Integration of innate and adaptive immunity: the DC*
- **Craig B. Thompson**, University of Pennsylvania School of Medicine, *Lymphocyte homeostasis*
- **Marc K. Jenkins**, University of Minnesota Center for Immunology, *The primary immune response: putting the pieces back together*
- **Andrew J. Caton**, Wistar Institute, *T and B cell tolerance*
- **Christopher A. Hunter**, University of Pennsylvania School of Veterinary Medicine, *Cytokines*
- **Cathryn Nagler**, Massachusetts General Hospital, *Mucosal immunology*
- **Antony Rosen**, Johns Hopkins University School of Medicine, *Autoimmunity*
- **Arnold I. Levinson**, University of Pennsylvania School of Medicine, *Allergy and hypersensitivity*
- **David Artis**, University of Pennsylvania School of Veterinary Medicine, *Immunity to helminth parasites: new insights into the regulation of type 2 cytokine responses*
- **E. John Wherry**, Wistar Institute, *Immunologic memory to intracellular pathogens*
- **Joel D. Ernst**, NYU School of Medicine, *Immunity to bacterial infections*
- **Barney S. Graham**, National Institute of Allergy and Infectious Diseases, NIH, *Immunization against viral diseases*
- **Wayne W. Hancock**, Children's Hospital of Philadelphia, *Transplantation*
- **Jordan S. Orange**, Children's Hospital of Philadelphia, *Primary immunodeficiency*
- **Andy Hurwitz**, National Cancer Institute, NIH, *Tumor immunology*
- **Andrew C. Chan**, Genentech, Inc., *Bench to bedside to bench: current issues in immunology*

For complete details and to register, visit: [www.aai.org/Intro\\_Course/2008.htm](http://www.aai.org/Intro_Course/2008.htm). For information or assistance in registering, contact [meetings@aai.org](mailto:meetings@aai.org) or 301-634-7178. **Note: Overseas applicants are advised to apply early for visas.**

\* Financial support for underrepresented minority scientists is available through the FASEB MARC Program: <http://marc.faseb.org/>.





# The American Association of Immunologists 2008 Advanced Course in Immunology

July 19-24, 2008

The University of Minnesota, Minneapolis, MN

**Course Director: Marc K. Jenkins, Ph.D.**, Professor and Associate Director, Center for Immunology, University of Minnesota

**Course Co-Director: Kristin A. Hogquist, Ph.D.**, Professor, Department of Laboratory Medicine and Pathology, Center for Immunology, University of Minnesota

---

*Don't miss the AAI Advanced Course in Immunology! Register Now! Limited Space Available!*

This intensive annual course is designed for serious students of immunology. Leading experts will present recent advances in understanding the biology of the immune system and its role in health and disease. This course is directed toward advanced trainees and scientists who wish to expand or update their understanding of the field. This is not an introductory course and attendees will need to have a firm understanding of the principles of immunology. Registration Deadline: **June 30, 2008**.

Minority Access to Research Careers (MARC) travel awards\* are available to US Citizens and permanent residents.

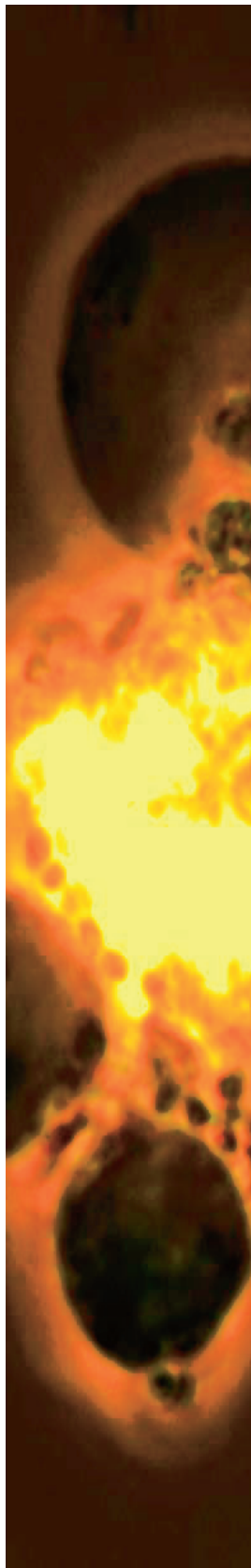
## Faculty

---

- **Marc K. Jenkins**, University of Minnesota  
Center for Immunology  
*Anatomy of the Immune Response*
- **Gabriel Nunez**, University of Michigan  
Cancer Center  
*Innate Immunity*
- **Andrea J. Tenner**, University of California, Irvine  
*Complement*
- **Andrea J. Sant**, University of Rochester  
Medical Center  
*Antigen Presentation*
- **A. Karolina Palucka**, Baylor Institute of Biomedical Studies  
*Dendritic Cells*
- **Barry P. Sleckman**, Washington University School of Medicine  
*Antigen Receptors*
- **Michael A. Farrar**, University of Minnesota Center for Immunology  
*B Cell Development*
- **Kristin A. Hogquist**, University of Minnesota Center for Immunology  
*T Cell Development*
- **Wayne M. Yokoyama**, Washington University School of Medicine  
*NK Cells*
- **Stephen C. Jameson**, University of Minnesota Center for Immunology  
*Lymphocyte Memory*
- **Christopher A. Hunter**, University of Pennsylvania School of Veterinary Medicine  
*Immune Response to Pathogens*
- **Daniel L. Mueller**, University of Minnesota Center for Immunology  
*T Cell Tolerance/Autoimmunity*
- **Mark J. Shlomchik**, Yale University School of Medicine  
*B Cell Tolerance/Autoimmunity*
- **Pamela L. Schwartzberg**, NHGRI, NIH  
*Lymphocyte Signal Transduction*
- **Yoji Shimizu**, University of Minnesota Cancer Center and Center for Immunology  
*Lymphocyte Trafficking*
- **Stephen J. McSorley**, University of Minnesota Center for Immunology  
*Mucosal Immunity*
- **Matthew F. Mescher**, University of Minnesota Center for Immunology  
*Tumor Immunology*
- **Elizabeth Ingulli**, University of California, San Diego  
*Transplant Immunology*

For complete details and to register, visit: [www.aai.org/Adv\\_Course/2008/Program.htm](http://www.aai.org/Adv_Course/2008/Program.htm).  
For information or assistance in registering, contact [meetings@aai.org](mailto:meetings@aai.org) or 301-634-7178.  
*Note: Overseas applicants are advised to apply early for visas.*

\* Financial support for underrepresented minority scientists is available through the FASEB MARC Program: <http://marc.faseb.org/>.



The seal of the American Association of Immunologists is a circular emblem. It features a large, stylized 'AAI' in the center, with the words 'AMERICAN ASSOCIATION OF IMMUNOLOGISTS' around the top and 'FOUNDED 1913' around the bottom.

# The 95th Annual Meeting of The American Association of Immunologists

*in conjunction with Experimental Biology 2008, April 5–9, San Diego, California*

## FUTURE AAI ANNUAL MEETINGS

### **IMMUNOLOGY 2009™**

May 8–12 • Seattle, Washington

### **IMMUNOLOGY 2010™**

May 7–11 • Baltimore, Maryland

### **IMMUNOLOGY 2011™**

May 13–17 • San Francisco, California

### **IMMUNOLOGY 2012™**

May 4–8 • Boston, Massachusetts

# THE JOURNAL OF IMMUNOLOGY

*Published by The American Association of Immunologists since 1916*



*If you don't know what's in The JI,  
then you don't know what's going on in immunology.*



***The JI is the 15th most cited journal of all 6,164 scientific journals.***

- ISI Science Citation Index, 2006 (Journal Citation Reports)

*The JI is the definitive record for research progress in immunology. Original peer-reviewed articles reporting studies in basic and clinical immunology include:*



- ◆ Cutting Edge (Rapid Communication)
- ◆ Cellular Immunology  
and Immune Regulation
- ◆ Molecular and Structural Immunology
- ◆ Immunogenetics
- ◆ Host Defense
- ◆ Inflammation
- ◆ Clinical Immunology

*and SPECIAL SECTIONS*

- ◆ In This Issue
- ◆ Letters to the Editor
- ◆ Pillars of Immunology
- ◆ Brief Reviews

**Editor-in-Chief**  
Robert R. Rich, M.D.

**Executive Director, AAI/Managing Editor**  
M. Michele Hogan, Ph.D.

Visit us on the Web for the latest in immunology.

**[www.jimmunol.org](http://www.jimmunol.org)**