

Spot the difference.



Ready to move from one platform to another with complete confidence? Invitrogen's BioSource™ Luminex® Assays are the only ones benchmarked to ELISA and calibrated to NIBSC standards or published intracellular cell models for phosphoprotein activity. We also test standards before and after lyophilization, so you can count on consistent performance. With more than 150 kits to choose from and expert field support ready to work by your side, Invitrogen's Luminex® Instrument and Assays can help deepen your understanding of extracellular and intracellular proteins. See how you can cross over at www.invitrogen.com/luminexassay.



IMMUNOLOGY FACULTY POSITIONS

Under the leadership of Departmental Chair Kelvin Lee M.D., Roswell Park Cancer Institute is committed to the further expansion of its Immunology program. The Department of Immunology invites applications for the position equivalent to an Associate Professor. Candidates are sought with a strong background in Immunology with special interest in Tumor Immunology, to complement and broaden the expertise of existing and three newly recruited faculty in the department, and strengthen the mission of the Institute as an NCI-designated Comprehensive Cancer Center.

Selection will be based on excellence in research and potential to maintain an outstanding independent research program. Applicants will be expected to have current peer-reviewed funding and documented ability to maintain a productive research program. The new recruit will be expected to contribute to the graduate education program at the Institute and to administrative responsibilities of the department. The Tumor Immunology Program has successfully renewed its NCI predoctoral training grant (T32). We encourage applicants who desire an environment that fosters interaction with a diverse group of scientists and clinicians, both within the Institute and the State University of New York at Buffalo.

Laboratory space in a newly opened 300,000-sq.-ft. Buffalo Life Sciences Complex provides a highly multidisciplinary environment, access to state-of-the-art core facilities, and the opportunity to interact with both research scientists and research-oriented clinicians from several departments.

Applicants should send their curriculum vitae, description of research accomplishments and of future research objectives, and the names and addresses of three references to:

Dr. Yasmin Thanavala, Search Committee Chair
Department of Immunology
Roswell Park Cancer Institute
Elm & Carlton Streets
Buffalo, NY 14263

RPCI is an M/F/D/V Affirmative Action Employer



Sultan Qaboos University (SQU), the National University of the Sultanate of Oman, has the pleasure to invite applicants for the post of:

Associate Professor or Full Professor of Immunology, in the Department of Microbiology & Immunology,

The candidate must hold a Ph.D. in Immunology or is an M.D. with a higher accredited qualification (MRCPPath or equivalent). The candidate must have been in a similar post in a recognized University, with adequate teaching experience and a substantial record of publications in internationally refereed journals.

Apart from an attractive tax-free salary, SQU offers free furnished accommodation, family free medical care in government hospitals, education allowance for schooling, end-of-service gratuity and 60 days annual leave with return air-tickets for staff, spouse and three children until the age of 18 years.

General information about the University is available on the University's Web site www.squ.edu.om.

Interested candidates are requested to include a statement of interest, a detailed curriculum vitae, and names and addresses, of three referees to the following address, quoting **Ref: ADV/MED/...../...../2008**:

The Director, Personnel Affairs
Sultan Qaboos University
P.O. Box 50, Postal Code 123, Al Khoudh,
Sultanate of Oman Fax: (+968) 2441 3255
E. mail: vacancies@squ.edu.om

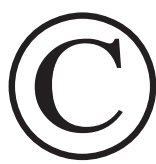
Please notice that if you have not received a reply within two months, kindly consider it as an apology from us.

SULTAN QABOOS UNIVERSITY
Sultanate of Oman



COLLEGE OF MEDICINE & HEALTH SCIENCES

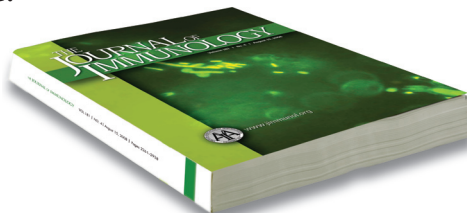
Do you need copyright permission from THE JOURNAL OF IMMUNOLOGY?



EASY ONLINE COPYRIGHT REQUEST FORM

Submit copyright requests online at:
www.aai.org/ji/copyright.html

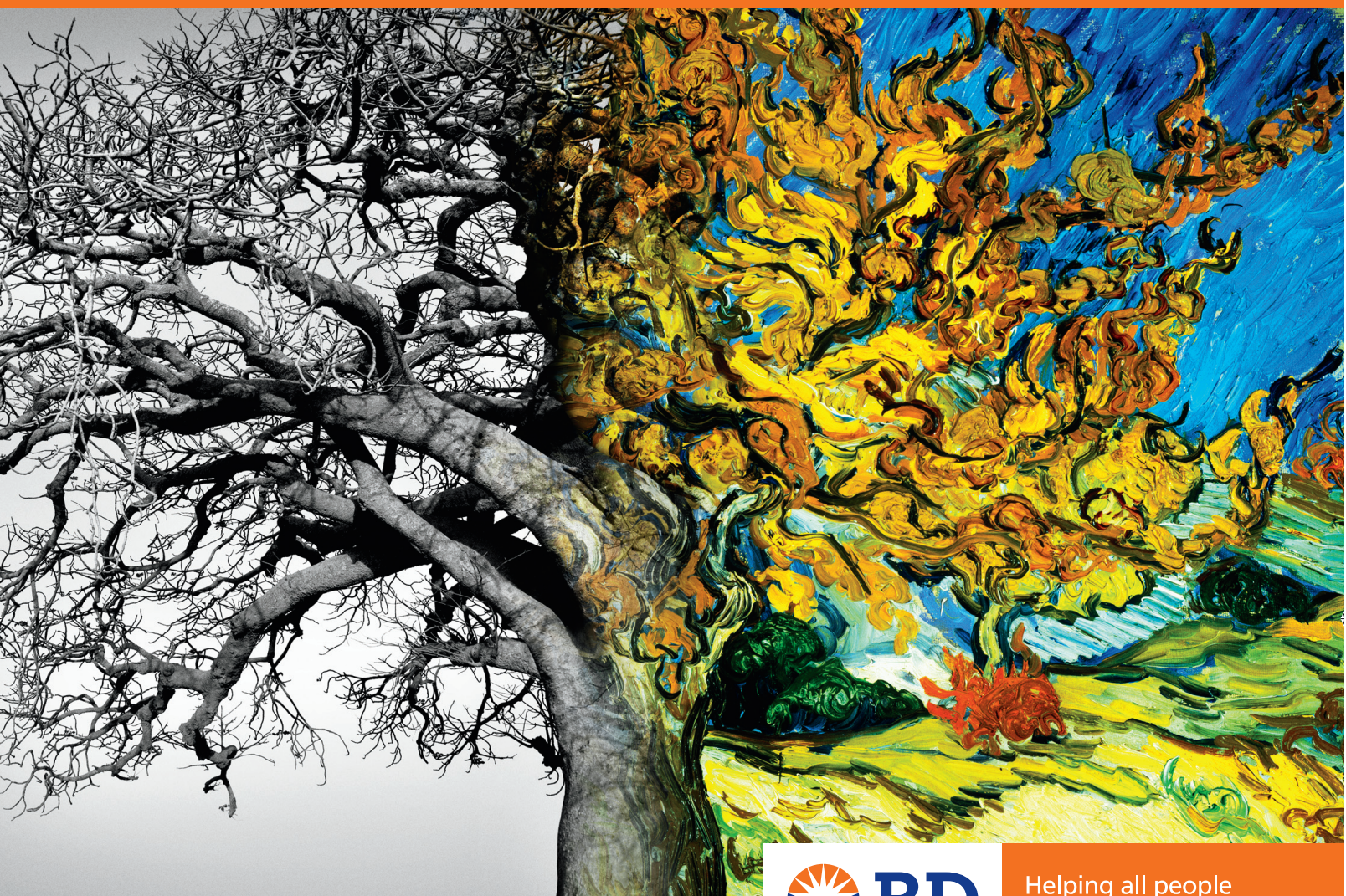
- Enter the name and institution contact information.
- Provide the citation of the original journal article.
- When adapting a figure or table, submit the request online and FAX the modified figure to 301-634-7829.
- State where the article will be reproduced and indicate the anticipated date of publication.



IT'S THAT EASY!

Welcome to a more colorful worldSM

Introducing BD HorizonTM V450 violet laser reagents



Helping all people
live healthy lives

Experience the full potential of multicolor flow cytometry

Flow cytometry allows you to analyze multiple parameters simultaneously—and by adding more colors you can open up a whole new world of information and insight. BD Biosciences makes it easy for you, with instrumentation and reagents

optimized for exceptional multicolor performance, and with expert support just a call or click away. Double your colors and your data—get started by contacting your BD representative or visiting bdbiosciences.com/colors today.

For Research Use Only. Not for use in diagnostic or therapeutic procedures.
BD, BD Logo and all other trademarks are property of Becton, Dickinson and Company. © 2008 BD
23-10233-00

BD Biosciences
2350 Qume Drive
San Jose, CA 95131
bdbiosciences.com