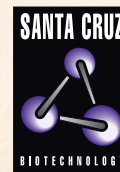
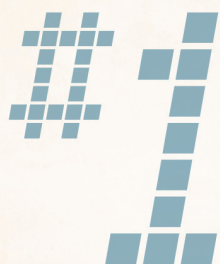


# INTRODUCING THE NEW 2009 Research Antibody Catalog



*The Power to Question*

FROM SANTA CRUZ BIOTECHNOLOGY, INC.



LEADER IN  
INNOVATION  
AND QUALITY

## Leading Worldwide Source for:

- monoclonal and polyclonal antibodies
- siRNA and shRNA (plasmid and lentivirus) products
- gene specific transfected cell lysates
- phospho-specific antibodies
- secondary antibodies and support products

Website updated daily with new antibodies, siRNA/  
shRNA products, transfected lysates, support data  
and product citations.

[www.scbt.com](http://www.scbt.com)

## Headquarters

TOLL FREE: 800.457.3801

TEL: 831.457.3800

FAX: 831.457.3801

E-MAIL: [customercare@scbt.com](mailto:customercare@scbt.com)

## European Support

TOLL FREE: +00800.4573.8000

PHONE: +49.6221.4503.0

FAX: +49.6221.4503.45

E-MAIL: [europe@scbt.com](mailto:europe@scbt.com)

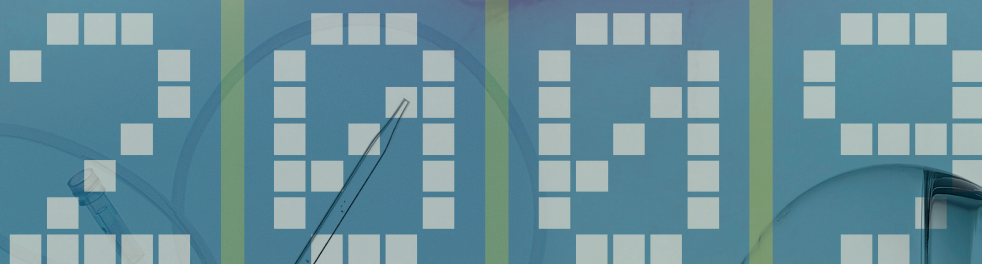
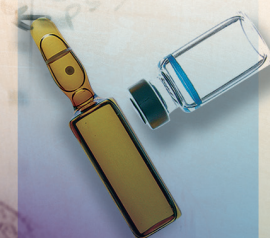
## Asian Support

JAPAN TOLL FREE: (010) 800.40402026

S. KOREA TOLL FREE: 00798.1.1.002.0297

N. CHINA TOLL FREE: 10.800.711.0752

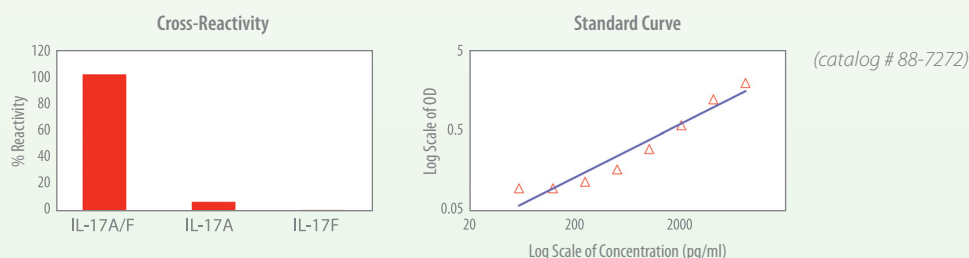
S. CHINA TOLL FREE: 10.800.110.0694



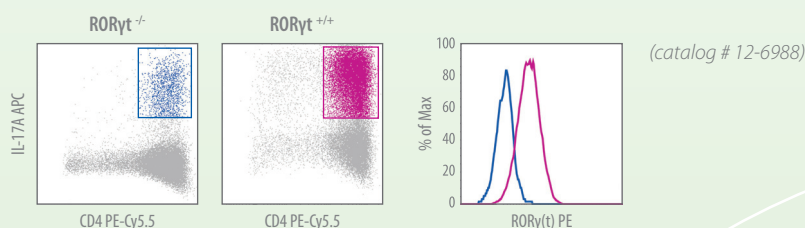
# Deciphering the Th17 Cell Lineage

## NEW innovative tools for Th17 biology

Introducing the **ONLY** ELISA that detects mouse IL-17A/F heterodimer without interference by IL-17A or IL-17F homodimers.



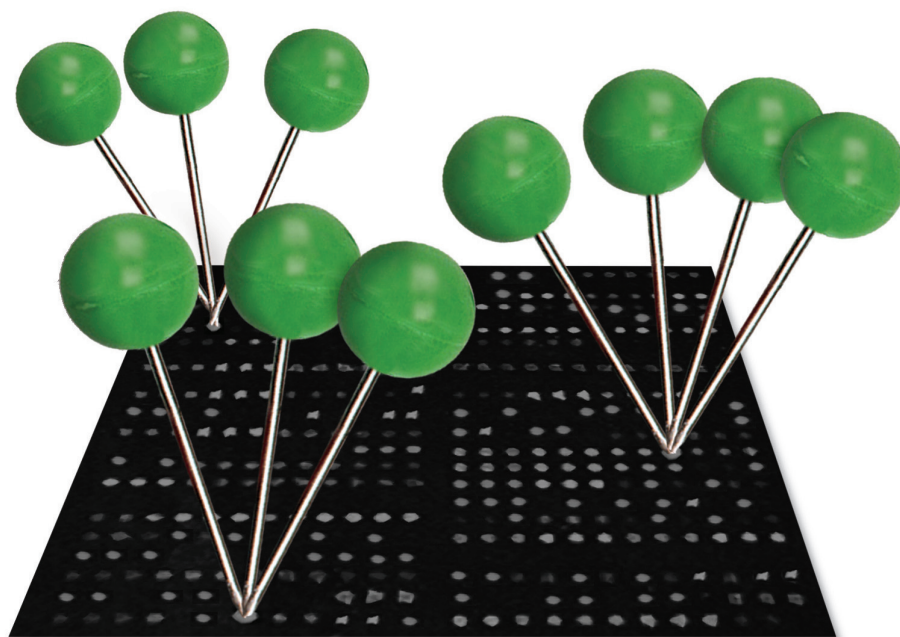
For the **FIRST** time, identify the Th17 "master regulator" ROR $\gamma$ (t) by flow cytometry.



Data provided courtesy of D.R. Littman laboratory.

full spectrum cell analysis  
**eBioscience**

*Register online and be first to receive updates on new products and promotions.*



## Absolute identification of protein biomarkers? Absolutely.

Did you know that autoantibodies can be useful indicators of many diseases including cancer? Now with 8,200 full-length proteins on every microarray, ProtoArray® Human Protein MicroArrays deliver absolute identification of novel autoantibody markers for cancer, autoimmune, or other diseases. With sensitivity in the picogram range, you can profile diseased and healthy samples with as little as 1µL of crude sample in your own lab. Or if you prefer, our Immune Response Biomarker Profiling Service offers expert profiling, data analysis, and a comprehensive report that identifies your biomarker candidates. So there's no doubt, and no waiting, because you can get results in just one day. Pinpoint what you need at [www.invitrogen.com/absolutelD](http://www.invitrogen.com/absolutelD).



# multiplexcellent.

## Improved magnetic cytokine assays, greater throughput, trusted results.

For the past eight years, you have trusted Bio-Rad's multiplex Bio-Plex® assays. And we've trusted you to tell us what we can do better. Your feedback has driven every improvement to our assays and workflow without sacrificing the reliability and reproducibility you require.

Bio-Plex Pro™ magnetic cytokine assays deliver superior assay performance and throughput so you save precious time and samples.

- Magnetic bead-based assays allow for automation and increased reproducibility
- Same proven antibodies with improved assay performance
- Bio-Plex Pro wash stations simplify separation

Please visit [www.bio-rad.com/bio-plex/](http://www.bio-rad.com/bio-plex/) for more information on over 80 Bio-Plex cytokine assays and a complete list of targets.

**Research. Together.**





# The American Association of Immunologists

## Future AAI Annual Meetings

**IMMUNOLOGY 2009™ • May 8–12 • Seattle, Washington**

**IMMUNOLOGY 2010™ • May 7–11 • Baltimore, Maryland**

**IMMUNOLOGY 2011™ • May 13–17 • San Francisco, California**

**IMMUNOLOGY 2012™ • May 4–8 • Boston, Massachusetts**

## SYSTAT IS VALUE\*

Need to be more conscious of  
your research software budget?  
SYSTAT can help.

www.**SYSTAT**.com



**ImmunoCasts** –  
*The Journal  
of Immunology  
on your schedule*

### ImmunoCasts

highlight the very best articles published in  
**THE JOURNAL OF IMMUNOLOGY (THE JI)**  
in audio format.



Listen to the journal's  
**IN THIS ISSUE** section  
during your commute,  
workout, or while on travel!

Visit **THE JI** online at  
**www.jimmunol.org** and  
click the **ImmunoCasts** icon.

**NOW AVAILABLE!**

**ImmunoCasts** are now also available  
free on **iTunes!**



## New!

### AlphaLISA immunoassay kits for research on:

- Adiponectin
- Amyloid  $\beta$  1-40
- Amyloid  $\beta$  1-42
- CHO-P
- COMP
- EGFR
- EPO
- G-CSF
- GH
- GLP-1 (7-36 amide)
- GM-CSF
- HIV-p24
- IFN- $\gamma$
- IgG
- IL10
- IL17
- IL1 $\beta$
- IL2
- IL3
- IL6
- IL8
- Insulin
- Leptin
- NSO-P
- Prolactin
- PSA
- TNF $\alpha$
- VEGF

AlphaLISA is for research purposes only, not for diagnostic procedures.

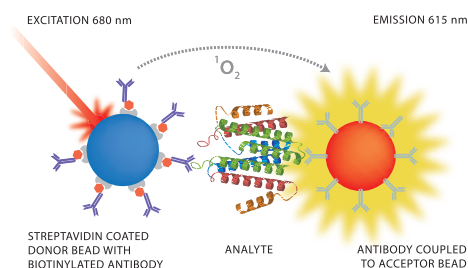
# AlphaLISA.

**Say good-bye to all those wash steps.**

Something tells us you won't miss time-consuming, labor-intense wash steps. Because AlphaLISA® is here: a homogenous alternative to conventional ELISAs, ideal for automation and miniaturization. By converting, you have a high-throughput, sensitive, reliable way to detect a wide variety of analytes – from small molecules to large protein complexes in samples such as serum and plasma. And, it delivers less assay variation than conventional ELISAs. So good-bye to washing and hello to faster, more efficient assays. You'll never look back.

[www.perkinelmer.com/nowashELISA](http://www.perkinelmer.com/nowashELISA)

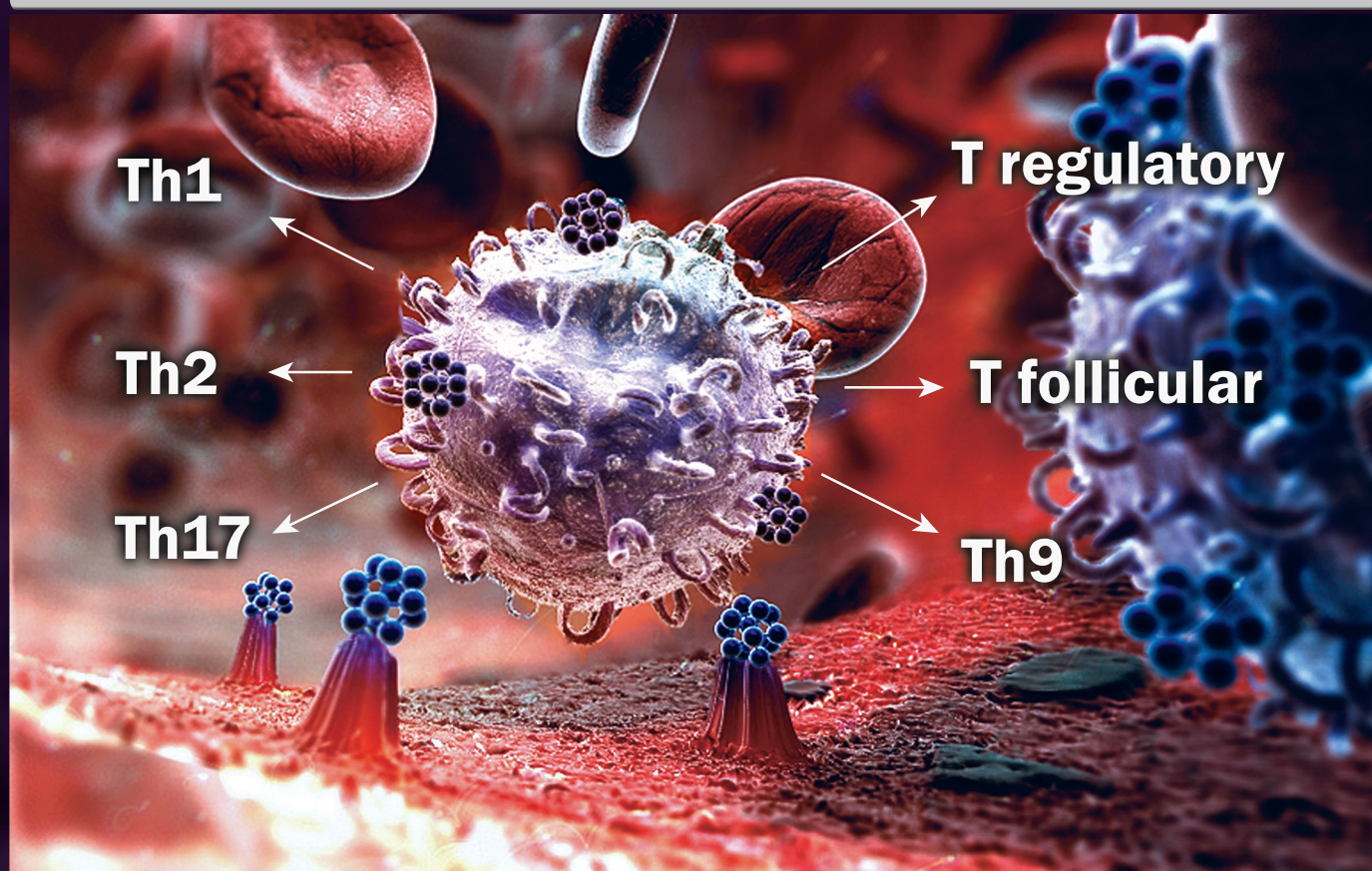
Our exclusive AlphaLISA no-wash assay platform.





# Where are your T cells going?

Follow them with quality Research Reagents and Services from BioLegend



## Biofunctional Antibodies

*For in vivo and in vitro use*

IFN- $\gamma$	CD3
IL-9	CD28
IL-17A	ICOS (CD278)
GM-CSF	IL-12/23 (p40)
MCP-1	NKG2D
VEGF-A	SLAM (CD150)

*plus many more!*

**Call for bulk pricing!**

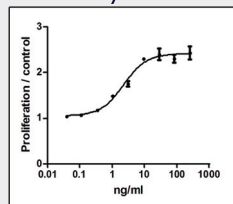
## ELISA MAX™ Sets

IL-1 $\alpha$	IL-12 (p40)
IL-1 $\beta$	IL-12 (p70)
IL-2	IL-21
IL-4	IL-25
IL-5	IL-32 $\alpha$
IL-6	IFN- $\gamma$
IL-8	TNF- $\alpha$
IL-17A	TSLP

**and more!**

## Recombinant Cytokines

*For bioassays and ELISAs*



TF-1 cell proliferation induced by mouse IL-13.

## Custom Assay Development and Testing Services

**LEGENDplex™**



**LEGENDArray™**

Flow Cytometry-based Multiplexing

**ELISA**

**AlphaLISA®**

**Call for details!**



The path to legendary discovery™

BioLegend Contact Information  
Toll-Free at 1.877.246.5343 (877-BIOLEGEND)  
International: 1.858.455.9588

[www.biolegend.com](http://www.biolegend.com)

WORLD-CLASS QUALITY. SUPERIOR CUSTOMER SUPPORT. OUTSTANDING VALUE.