

THE JOURNAL OF IMMUNOLOGY

Volume 188 | No. 11 | June 1, 2012



www.jimmunol.org



2012 Introductory Course in Immunology

July 14–19, 2012 • The University of Pennsylvania, Philadelphia, Pennsylvania

Director: Christopher A. Hunter, Ph.D., *University of Pennsylvania School of Veterinary Medicine*

Co-Director: Terri M. Laufer, M.D., *University of Pennsylvania School of Medicine*

Don't miss the most comprehensive introduction to immunology available!

This intensive two-part course, taught by world-renowned immunologists, provides a comprehensive overview of the basics of immunology. This course is for students new to the discipline or those seeking more information to complement general biology or science training. **Part I (July 14–16)** is a detailed introduction to the basic principles of immunology and is suitable for students with a general biology background. **Part II (July 17–19)** is a clinically oriented lecture series focusing on specialty areas.

Parts I and II may be taken independently at the discretion of the student.

Faculty

Christopher A. Hunter, *University of Pennsylvania School of Veterinary Medicine*

Introduction to the Immune System

Kathleen E. Sullivan, *Children's Hospital of Philadelphia*

Innate Immunity: Introduction to the Cells

Igor E. Brodsky, *University of Pennsylvania School of Veterinary Medicine*

Innate Immunity: Introduction to Pattern Recognition and Intracellular Signaling

Judith A. Owen, *Haverford College*

Introduction to Adaptive Immunity

Michael P. Cancro, *University of Pennsylvania School of Medicine*

Clonal Selection and V(D)J Recombination (B Cell Centric)

Terri M. Laufer, *University of Pennsylvania School of Medicine*

MHC Restriction and Thymic Selection

Laurence C. Eisenlohr, *Jefferson Medical College*

Antigen Processing and Presentation

Edward M. Behrens, *Children's Hospital of Philadelphia*

Dendritic Cells: The Bridge Between Innate and Adaptive Immunity

Gary A. Koretzky, *University of Pennsylvania School of Medicine*

Signaling in the Immune System

Gudrun Philomena Fiona Debes, *University of Pennsylvania School of Veterinary Medicine*

Trafficking of Immune Cells

Michael P. Cancro, *University of Pennsylvania School of Medicine*

B Cell Homeostasis, Activation, and Memory Formation

Ronald N. Germain, *NIAID, NIH*

Dynamic Intravital Imaging of the Immune System: Replacing Cartoons with Movies of the Real Thing

Andrew J. Caton, *The Wistar Institute*

T and B Cell Tolerance

Christopher A. Hunter, *University of Pennsylvania School of Veterinary Medicine*

Cytokines

Jonathan S. Maltzman, *University of Pennsylvania School of Medicine*

Solid Organ Transplantation

Cathryn Nagler, *University of Chicago*

Mucosal Immunology

David Artis, *University of Pennsylvania School of Medicine*

Type 2 Immunity and Parasite Infections

Robert H. Vonderheide, *University of Pennsylvania School of Medicine*

Tumor Immunology

Sunny Shin, *University of Pennsylvania School of Medicine*

Immunity to Bacterial Pathogens

Carolina B. Lopez, *University of Pennsylvania School of Veterinary Medicine*

Immunity to Viruses

E. John Wherry, *University of Pennsylvania School of Medicine*

Immunologic Memory

David B. Weiner, *University of Pennsylvania School of Medicine*

Vaccination

Vijay K. Kuchroo, *Brigham & Women's Hospital, Harvard Medical School*

Autoimmunity

Judy H. Cho, *Yale School of Medicine*

Genetic Approaches to Immune-Mediated Diseases

Andrew C. Chan, *Genentech, Inc.*

Bench to Bedside to Bench: Current Issues in Immunology

For complete course details and registration, visit:

www.aai.org/Education/Courses

For assistance, contact (301) 634-7178 or meetings@aai.org. Overseas applicants are advised to apply early for visas; for details, visit www.aai.org/Education/Courses/Visa. Financial support for underrepresented minority scientists is available through the FASEB MARC Program; for details, visit <http://marc.faseb.org>.



2012 Advanced Course in Immunology

July 29–August 3, 2012 • Seaport World Trade Center, Boston, Massachusetts

Course Director: Leslie J. Berg, Ph.D., *University of Massachusetts Medical School*

AAI Educational Programs Manager: Mary T. Litzinger, Ph.D.

Don't miss the premier course in immunology for research scientists!

This intensive course is directed toward advanced trainees and scientists who wish to expand or update their understanding of the field. Leading experts will present recent advances in the biology of the immune system and address its role in health and disease. This is not an introductory course; attendees will need to have a firm understanding of the principles of immunology.

Faculty

Marc K. Jenkins, *Center for Immunology,
University of Minnesota Medical School*
Anatomy of the Immune Response

Christine A. Biron, *Brown University*
Innate Immunity

Wayne M. Yokoyama, *Washington University
School of Medicine*
*NK Cells—Their Receptors and Function
in Health and Disease*

Andrea M. Cooper, *Trudeau Institute*
*Molecular and Cellular Mediators
of Inflammation*

Shannon J. Turley, *Dana Farber Cancer Institute,
Harvard Medical School*
Dendritic Cells

Eugene M. Oltz, *Washington University School
of Medicine*
*The Generation and Modification
of Lymphocyte Antigen Receptor Genes*

Shiv Pillai, *Massachusetts General Hospital
Cancer Center, Harvard Medical School*
B Cell Development

Ellen A. Robey, *University of California, Berkeley*
T Cell Development

Ulrich H. von Andrian, *Harvard Medical School*
Lymphocyte Trafficking

Kenneth L. Rock, *University of Massachusetts
Medical School*
*MHC-Restricted Antigen Presentation
to T Cells*

Susan M. Kaech, *Yale School of Medicine*
Lymphocyte Memory

Arthur Weiss, *University of California,
San Francisco*
Signaling from Antigen Receptors

Charlotte S. Kaetzel, *University of Kentucky
College of Medicine*
Mucosal Immunity

JoAnne L. Flynn, *University of Pittsburgh
School of Medicine*
Immune Response to Pathogens

Pamela S. Ohashi, *Ontario Cancer Institute,
University of Toronto*
Tolerance

Betty A. Diamond, *The Feinstein Institute
for Medical Research*
Autoimmunity

Robert Schreiber, *Washington University
School of Medicine*
Tumor Immunology

Jack A. Elias, *Yale School of Medicine*
New Concepts in the Pathogenesis of Asthma

Raif Geha, *Children's Hospital Boston,
Harvard Medical School*

Immunodeficiencies: How to Find Them

Mary Collins, *Pfizer (ret.)*
Immunotherapeutics

Dan H. Barouch, *Beth Israel Deaconess
Medical Center, Harvard Medical School*
Vaccines

For complete course details and registration, visit:
www.aai.org/Education/Courses

For assistance, contact (301) 634-7178 or meetings@aai.org.

Overseas applicants are advised to apply early for visas; for details, visit www.aai.org/Education/Courses/Visa.html. Financial support for underrepresented minority scientists is available through the FASEB MARC Program; for details, visit <http://marc.faseb.org>.

IMMUNOLOGY 2013™

THE AMERICAN ASSOCIATION OF IMMUNOLOGISTS

Celebrating *100 Years*



Save the Date!



AAI Annual Meeting

May 3–7, 2013 ■ Honolulu, Hawaii

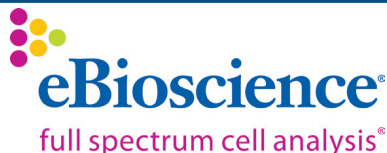
www.IMMUNOLOGY2013.org

Thank you to our sponsors

PLATINUM SPONSORS



- IMMUNOLOGY 2012™ Gala
- President's Service Appreciation Reception



- Chambers-eBioscience Memorial Award
- Lustgarten-eBioscience Memorial Award
- Opening Night Welcome Reception
- Meeting Bags

GOLD SPONSOR



MARC: Maximizing Access to Research Careers

- AAI Minority Scientist Travel Awards
- Support for Minority Affairs Committee Guest Lecture
- Program Support

SILVER SPONSORS



- AAI-BD Biosciences Investigator Award
- AAI Early Career Faculty Travel Grants
- AAI Trainee Abstract Awards
- Careers in Science Lecture and Roundtable



- AAI-Life Technologies Meritorious Career Award
- AAI-Life Technologies Trainee Achievement Awards

SUPPORTING SPONSORS

DARTMOUTH JOURNAL SERVICES



- The JI Editorial Board Dinner and Meeting

Genentech
A Member of the Roche Group

- General Meeting Support

Immunity Cell Press

- Cyber Café
- Literature

CONTRIBUTING SPONSORS



- Support for AAI Trainee Abstract Awards
- Support for AAI Laboratory Travel Grants



- Support for AAI Trainee Abstract Awards



- Refreshment Cart



- Support for AAI Early Career Faculty Travel Grants



- Literature



- Cyber Café



- Refreshment Cart



National Multiple Sclerosis Society

- Support for AAI Trainee Abstract Awards



- Literature

Henry J. Showell

- Pfizer-Showell Travel Award

OTHER SUPPORTERS

Genocea Biosciences

- Support for AAI Trainee Abstract Awards

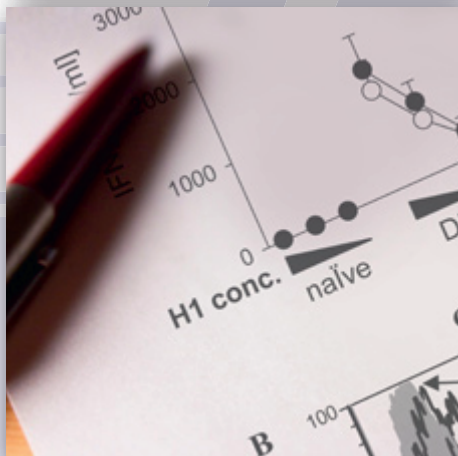
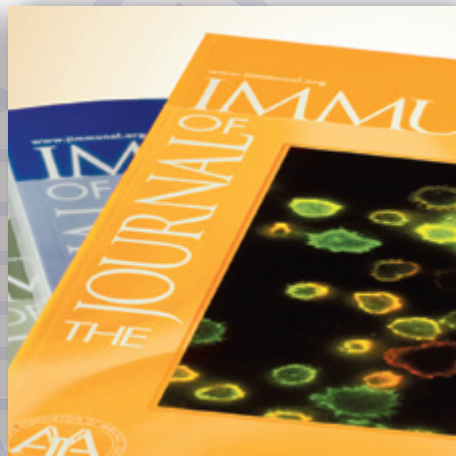
IMGENEX Corporation

- Support for AAI Trainee Abstract Awards

Mickie and Leon Berg, Eric Berg

- Meeting Support in Honor of AAI President Leslie J. Berg

Scientific Publishing



Dos and Don'ts for Authors and Reviewers

*Collected articles based upon presentations given
at a special session of the AAI Publications Committee
at IMMUNOLOGY 2009™ in Seattle, Washington
May 10, 2009*

Reprinted from the AAI Newsletter, November 2009–May 2010

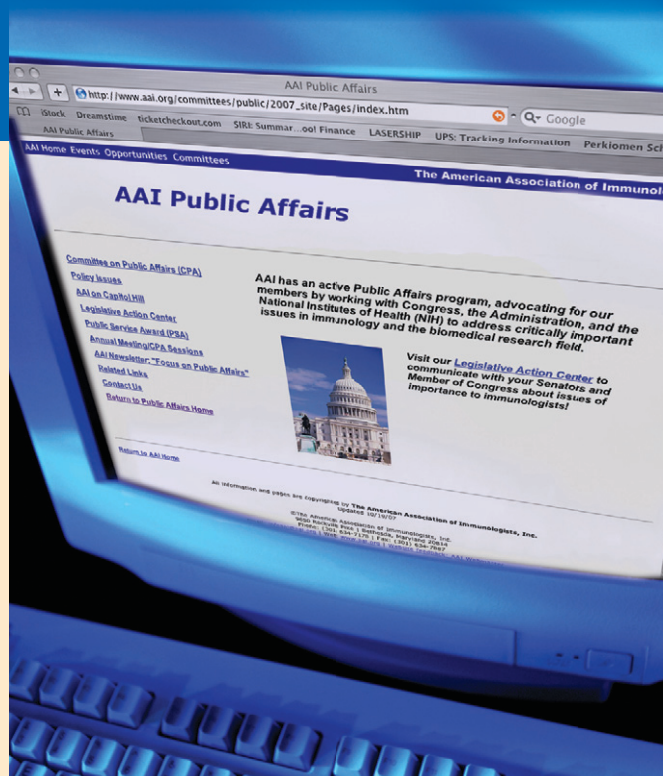


AAI Public Affairs ONLINE

Visit us to

- Learn about NIH funding
- Keep current on key policy issues
- Discover how you can help AAI in its advocacy initiatives

Go to www.aai.org
and click on
Public Affairs.



INTRODUCING

The Journal of Immunology **MOBILE**

<http://m.jimmunol.org>

**Immunology's most-cited*
journal at your fingertips!**

The Journal of Immunology (*The JI*) now offers a streamlined web-browsing experience on iPhone, BlackBerry, and Android mobile devices that is optimized for easy navigation and viewing on small screens. *The JI* Mobile includes tables of contents, abstracts, articles in full text XHTML and PDF formats, figures, tables and supplemental data, and citation links.

For information on how to access *The JI* Mobile, please contact mgr.subs@aai.org.

* Journal Citation Reports®; 2010

