

A fluorescence microscopy image of a mouse head, showing internal structures like the brain and eyes. The image is primarily green, with red and yellow spots indicating specific cellular or molecular markers. The mouse's eyes are particularly bright yellow.

# *The Journal of* Immunology



VOLUME 195, NUMBER 5 • SEPTEMBER 1, 2015 • [WWW.JIMMUNOL.ORG](http://WWW.JIMMUNOL.ORG)





# Important Dates for Two AAI Awards Programs

*AAI Programs to Benefit Your Lab's Current or Future Research*

## AAI Careers in Immunology Fellowship

KEY DATES	APPLICATIONS OPEN	APPLICATIONS CLOSE
	<b>JANUARY 15</b>	<b>MARCH 16</b>

These fellowships provide AAI member PIs with one year of salary support for a graduate student or postdoctoral fellow in their labs. Member PIs in good standing with less than \$250,000 (excluding PI's salary) in annual direct costs are eligible to apply.

Selection is based on the potential of the trainee, merit of the project, quality of the training environment, and financial need.

Direct inquiries to [fellowships@aai.org](mailto:fellowships@aai.org).

## AAI Travel for Techniques Award Program

AWARDS CYCLE	APPLICATIONS OPEN	APPLICATIONS CLOSE
<b>WINTER</b>	<b>DECEMBER 15</b>	<b>FEBRUARY 15</b>
<b>SPRING</b>	<b>APRIL 15</b>	<b>JUNE 15</b>
<b>FALL</b>	<b>AUGUST 15</b>	<b>OCTOBER 15</b>

The Travel for Techniques Award is given to member PIs, reimbursing up to \$1,500 in expenses for travel to learn a new technique. Member PIs in good standing with less than \$250,000 (excluding PI's salary) in annual direct costs are eligible to apply.

Direct inquiries to [tft@aai.org](mailto:tft@aai.org).

These two exciting awards programs were launched by the American Association of Immunologists in 2014, adding significantly to its already robust support for scientists through fellowships, career awards, and travel grants. For more information, visit [www.aai.org/awards](http://www.aai.org/awards).



# AAI Career Advisory Board

Starting your first lab? Facing new and puzzling issues? If so, you probably wish to turn to a more senior scientist for guidance—but perhaps not one at your own institution. The AAI Career Advisory Board (CAB) is tailored specifically for you.

The CAB is a referral service to match early faculty who submit requests for guidance on specific career issues with more senior PIs having experience and insight in those areas, excluding members of your own faculty. You may also specify individuals not to be contacted on your behalf.

**Eligibility:** Although the CAB is sponsored by the Committee on the Status of Women, it is open to all early-faculty AAI members, both men and women.

**Advisors:** A pool of senior scientists—men and women—are volunteering to be “on call.” Topics include recruiting, handling personnel issues, timing for first grant submissions, building networks, teaching, balancing family and work, serving on NIH study sections, and more.



Visit [www.aai.org/About/Leadership/Committees/CSOW/Career-Advisory-Board.html](http://www.aai.org/About/Leadership/Committees/CSOW/Career-Advisory-Board.html) to submit a request.





# You have the power.

Your membership in the American Association of Immunologists helps advance the field—and your career.

Being a part of AAI enables you to take an active role in helping to shape the future of immunology and attain your professional goals. You'll stand with members representing immunological research concerns on Capitol Hill. Plus, you gain access to:

- The best and brightest minds today.
- The world's largest annual all-immunology meeting.
- *The Journal of Immunology*, the pre-eminent peer-reviewed journal in the field.
- Many occasions and opportunities to present your research.
- Awards/fellowships/grants to support talented scientists in every career stage.

To learn more about how your professional life is enriched by membership in AAI, call 301.634.7195 or visit [www.aai.org](http://www.aai.org) today.





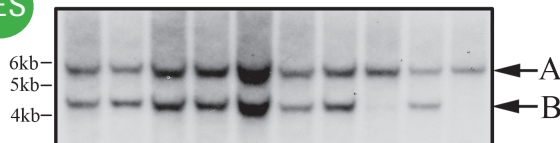
# Digital Image Dos and Don'ts



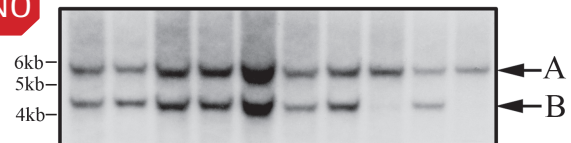
Before preparing manuscript figures, please read the Information for Authors at <http://www.jimmunol.org/site/misc/authorinstructions.xhtml#mspreparation>

## 1. Do not erase any part of the image, including the background.

YES

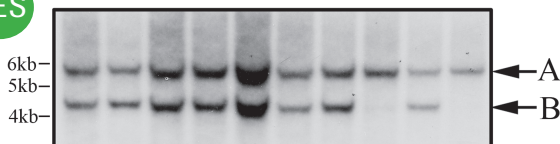


NO

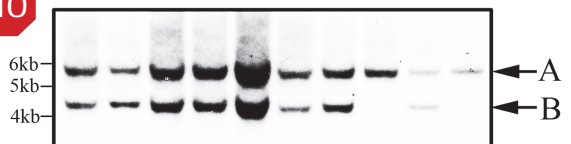


## 2. Do not use excessive contrast that removes background.

YES

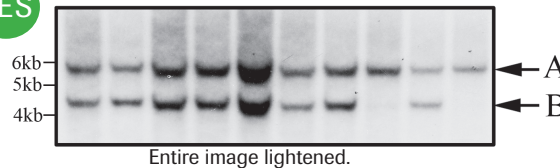


NO



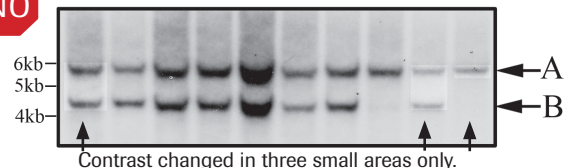
## 3. Make any adjustments to brightness or contrast equally across the entire image.

YES



Entire image lightened.

NO

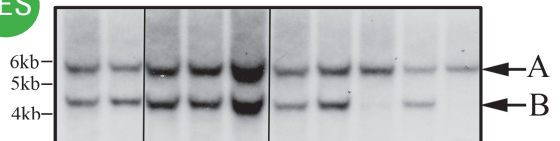


Contrast changed in three small areas only.

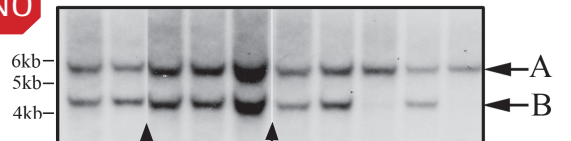
## 4. Indicate any splicing of data from a single experiment by contrasting (black or white) lines; state the manipulation in the legend.

Images from different experiments should not be spliced to form a new single image.

YES



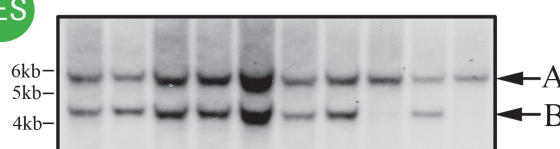
NO



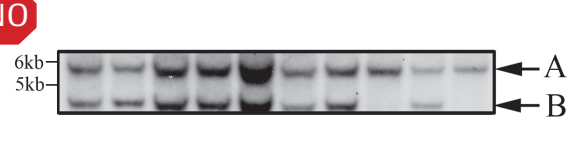
Splicing not marked.

## 5. Crop gels and blots conservatively, retaining important bands.

YES



NO



- All images submitted to *The Journal of Immunology* must accurately represent the original data.
- Original data (digital files, autoradiographs, films, etc.) for all experiments should be fully annotated, secured, and retrievable for up to 10 years.
- The original image file (raw data file) should be kept in an unprocessed and non-compressed file format.
- Figures that are compiled into multi-figure panels should be kept individually.



# Chronicling the AAI Legacy

1913–2014



## THE SCIENTISTS BEHIND THE SCIENCE

### AAI Oral History Project Available Online

To provide contemporary investigators and the public a rare view into the lives and times of influential immunologists, AAI arranged for the award-winning Oral Historian Brien Williams, Ph.D., to interview past AAI presidents, beginning in the spring of 2012. Interviewees were asked about their family backgrounds, early interest in science, reasons for studying immunology, career and research highlights, challenges faced, balancing professional and private life, hobbies outside of the laboratory, major changes in immunology over the course of their careers, and the future of immunology and science in the United States. The sessions, typically one and one-half to two hours in length, were professionally recorded and edited in high-definition video.

“Scientific contributions live on as researchers continue to build upon the work of the past, yet present-day investigators often know little about the scientists responsible for them,” said AAI Historian John Emrich, Ph.D., who first conceived of the Oral History Project in 2011. “The ‘Pillars of Immunology’ series in *The Journal of Immunology* makes the connections between past and present science more explicit than they otherwise would be, but investigators rarely have the opportunity to hear about their predecessors’ motivations, their hardships suffered and overcome, their lives outside of the laboratory, or even their candid thoughts on the state of the field.”

To date, 25 past presidents have been interviewed. Their presidential terms span five decades, from that of Herman Eisen (AAI '51, president 1968–69, now deceased) to Leslie Berg (AAI '94, president 2011–12). Included in this group were two past presidents in their 90s, Eisen and David Talmage (AAI '54, president 1978–79, now deceased); six in their 80s; and four in their 70s.

The memories and reflections contained in these interviews constitute an important facet of the history of immunology that would likely be lost to future generations if not preserved in the AAI Oral History Project. As AAI continues to conduct interviews with additional presidents and other influential immunologists, members and the general public are invited to view the oral histories already recorded. Video clips and the full-length interviews, which have been optimized for playback on TVs, computers, and mobile devices, are available at [www.aai.org/ohp](http://www.aai.org/ohp).



#### Oral History Interviews Currently Available:

- |                              |                                   |                                  |
|------------------------------|-----------------------------------|----------------------------------|
| ■ Herman N. Eisen (1968–69)  | ■ Irving L. Weissman (1994–95)    | ■ Susan L. Swain (2004–05)       |
| ■ K. Frank Austen (1977–78)  | ■ Richard W. Dutton (1995–96)     | ■ Paul M. Allen (2005–06)        |
| ■ David W. Talmage (1978–79) | ■ Katherine L. Knight (1996–97)   | ■ Lewis L. Lanier (2006–07)      |
| ■ Jonathan W. Uhr (1983–84)  | ■ Roger M. Perlmutter (1999–2000) | ■ Olivera J. Finn (2007–08)      |
| ■ William E. Paul (1986–87)  | ■ Philippa Marrack (2000–01)      | ■ Arthur Weiss (2008–09)         |
| ■ Max D. Cooper (1988–89)    | ■ James P. Allison (2001–02)      | ■ Betty A. Diamond (2009–10)     |
| ■ Henry Metzger (1991–92)    | ■ Paul W. Kincade (2002–03)       | ■ Jeffrey A. Frelinger (2010–11) |
| ■ Frank W. Fitch (1992–93)   | ■ Laurie H. Glimcher (2003–04)    | ■ Leslie J. Berg (2011–12)       |
| ■ Ellen S. Vitetta (1993–94) |                                   |                                  |