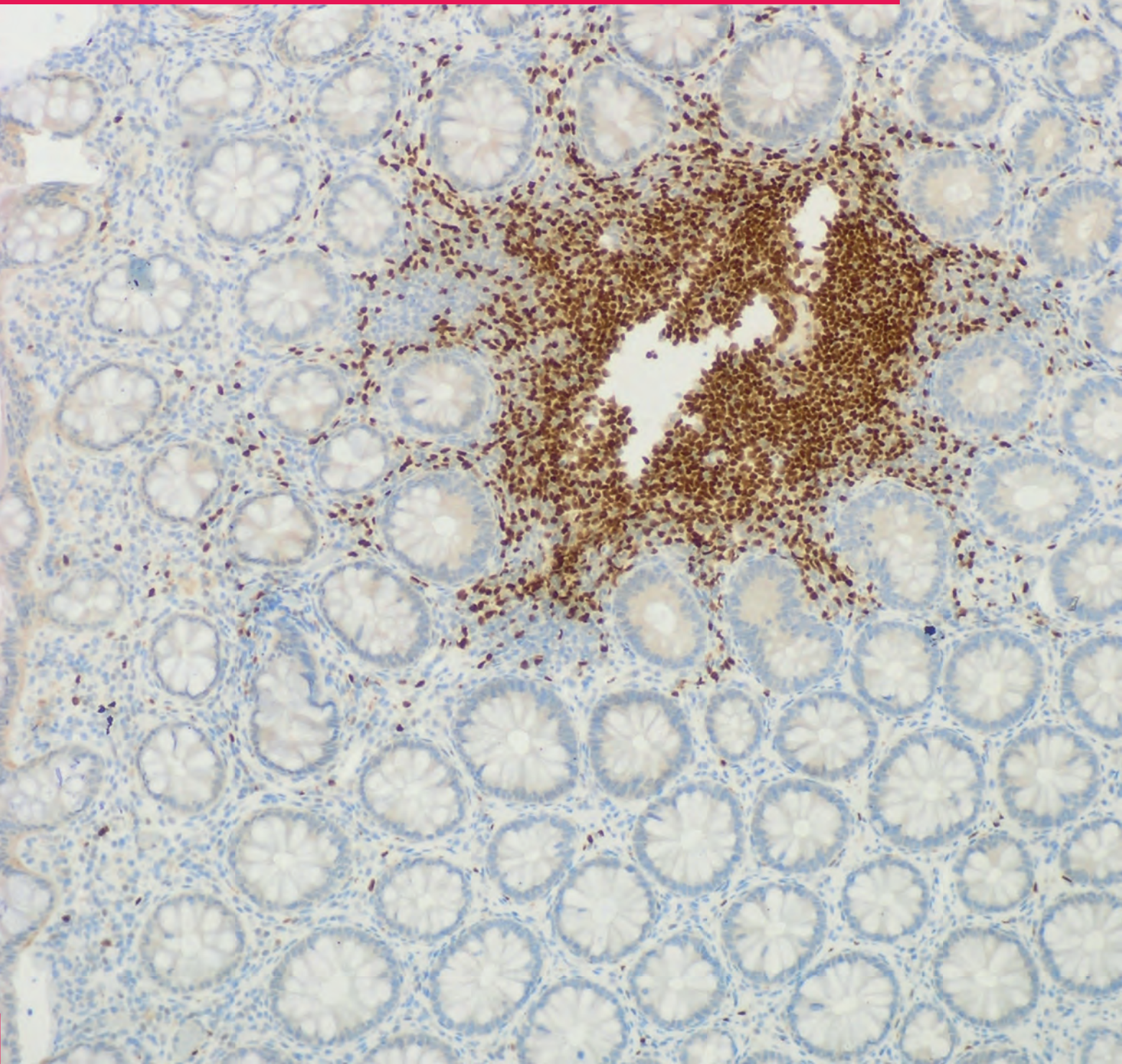




The Journal of Immunology

VOLUME 200, NUMBER 10 • MAY 15, 2018 • WWW.JIMMUNOL.ORG





2018 INTRODUCTORY COURSE IN IMMUNOLOGY

July 10–15, 2018 | UCLA Luskin Conference Center | Los Angeles, California

Director: Juan Carlos Zúñiga-Pflücker, Ph.D.

University of Toronto and Sunnybrook Research Institute

Don't miss the most comprehensive introduction to immunology available!

This intensive two-part course, taught by world-renowned immunologists, provides a comprehensive overview of the basics of immunology. This course is for students new to the discipline or those seeking more information to complement general biology or science training. **Part I (July 10–12)** is a detailed introduction to the basic principles of immunology and is suitable for students with a general biology background. **Part II (July 13–15)** is a clinically oriented lecture series focusing on specialty areas.

Parts I and II may be taken independently at the discretion of the student.

Faculty

Juan Carlos Zúñiga-Pflücker, University of Toronto
and Sunnybrook Research Institute
Introduction to the Immune System

Lewis L. Lanier, University of California, San Francisco
Innate Immunity: Introduction to the Cells

Deborah A. Fraser, California State University
Long Beach
Complement

Helen S. Goodridge, Cedars-Sinai Medical Center
*Innate Immunity: Introduction to Pattern
Recognition and Intracellular Signaling*

Julie M. Jameson, California State University
San Marcos
Introduction to Adaptive Immunity

David Nemazee, The Scripps Research Institute
B Cell Development and Maturation

Nilabh Shastri, University of California, Berkeley
Antigen Processing and Presentation

Juan Carlos Zúñiga-Pflücker, University of Toronto
and Sunnybrook Research Institute
MHC Restriction and Thymic Selection

Shannon J. Turley, Genentech, Inc.
*Dendritic Cells: The Bridge Between Innate and
Adaptive Immunity*

Michael Croft, La Jolla Institute for Allergy
and Immunology
Effector T Cell Differentiation and Response

Shane Crotty, La Jolla Institute for Allergy
and Immunology
B Cell Activation and Humoral Immunity

M. Carrie Miceli, University of California
Los Angeles
Signaling in the Immune System

Stephen M. Hedrick, University of California, San Diego
*Host-Pathogen Co-evolution in Human Beings:
the Red Queen and the Grim Reaper*

Lisa Osborne, University of British Columbia
Cytokines

Megan K. Levings, University of British Columbia
T and B Cell Tolerance

Matthias G. von Herrath, La Jolla Institute
for Allergy and Immunology
Autoimmunity

Jonathan S. Maltzman, Stanford University
Solid Organ Transplantation

Peter B. Ernst, University of California, San Diego
Mucosal Immunology

Marion Pepper, University of Washington
Type 2 Immunity

Martin Prlic, Fred Hutchinson Cancer Research Center
Immunologic Memory

Robert L. Modlin, University of California, Los Angeles
David Geffen School of Medicine
Immunity to Bacterial Pathogens

Elina Zuniga, University of California, San Diego
Immunity to Viruses

Antoni Ribas, University of California, Los Angeles
Tumor Immunology

Jennifer Puck, University of California, San Francisco
Genetic Approaches to Immune-Mediated Diseases

Nicole Frahm, Fred Hutchinson Cancer Research Center
Vaccination

Andrew C. Chan, Genentech, Inc.
*Bench to Bedside to Bench: Current Issues
in Immunology*

For complete course details and registration, visit: www.aai.org/Education/Courses

For assistance, contact (301) 634-7178 or meetings@aai.org. Overseas applicants are advised to apply early for visas; for details, see Visa Information tab at www.aai.org/Education/Courses/Introductory.

Financial support for underrepresented minority scientists is available through the FASEB MARC Program; for details, visit www.faseb.org/Professional-Development-and-Diversity-Resources/Travel-Awards.aspx.



The Journal of Immunology Influence Statement

Comprehensive • Authoritative • Foundational

The largest and oldest journal in the field offers unparalleled reporting of major advances in immunology research. Fully peer-reviewed by working scientists, reports are rapidly published and broadly cited.

Comprehensive

- Your “first stop” for major advances
- No triage! Every manuscript is peer-reviewed.
- All editorial decisions made by practicing scientists
- Submission to first decision: 28 days
- Average time to online publication: 4 weeks
- Fourth most frequently used journal for NIH-supported publications⁵

Authoritative

- Cited more than any other immunology journal¹
- 5-year Impact Factor of 5.185, top 20% of immunology journals¹
- Ranked #1 for Eigenfactor² among immunology journals¹
- Google Scholar h5-index is 95, sixth in the Immunology category³
- Scimago H-index is 328, fourth amongst 200 Immunology journals⁴

Foundational

- At 9.6 years¹, the cited half-life is one of the longest in the field!
- Committed to rigorously performed research that moves the field forward
- Over 1.5 million page views and 330,000 PDF downloads per month

The Journal of Immunology (*The JI*) is owned and published by The American Association of Immunologists, Inc., a non-profit association founded in 1913 that is dedicated to advancing the careers of scientists and promoting the field of immunological research.

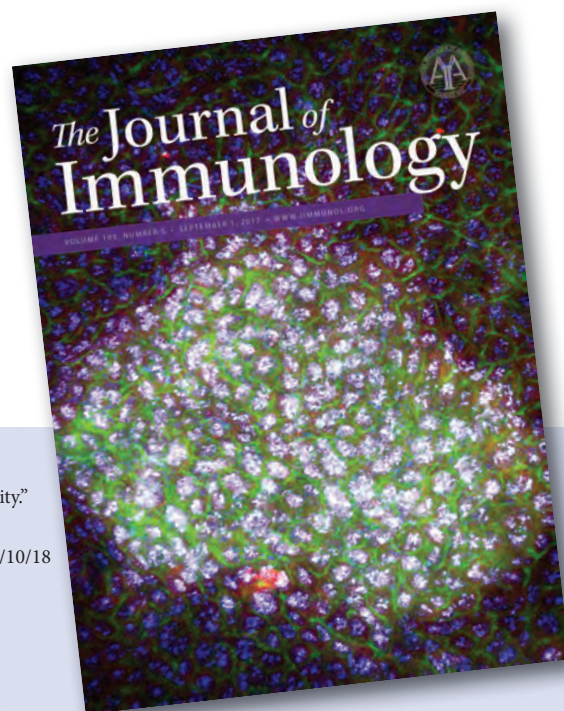
1. 2016 Journal Citation Reports

2. “A journal’s Eigenfactor score is our measure of the journal’s total importance to the scientific community.” <http://www.eigenfactor.org/about.php>, accessed 01/10/18

3. https://scholar.google.com/citations?view_op=top_venues&hl=en&vq=med_immunology, accessed 01/10/18

4. <http://www.scimagojr.com/journalrank.php?category=2403&area=2400&order=h&ord=desc>, accessed 01/10/18

5. <http://nexus.od.nih.gov/all/2016/03/02/nih-publication-impact-a-first-look/>, accessed 01/10/18



AAI Fellowship Program for Career Reentry



Fellowship Overview

This fellowship program provides one year of salary support to postdoctoral fellows who have taken a leave of absence of one year or more due to military obligations, personal or family medical leave, or other related family circumstances. These reasons may include recovering from a serious illness; providing elder or child care; fulfilling a military obligation; or relocating due to a spousal career transition.

Eligibility

- An applicant must have a tentative written offer of appointment as a postdoctoral fellow.
- The fellowship must be in immunology or a related field.

Award consideration is based on a combination of the merit of the research project, quality of the training environment, research and career accomplishments, and career potential.

APPLICATIONS OPEN JUNE 1
APPLICATIONS CLOSE SEPTEMBER 1



For more information or to apply: www.aai.org/Reentry
Direct inquiries to fellowships@aai.org



AAI Intersect Fellowship Program for Computational Scientists and Immunologists

Fellowship Overview

Recognizing the vital role cross-trained scientists play in furthering immunology research, this fellowship program is intended to promote understanding and communication between immunology researchers and computational scientists. A PI may apply for a one-year fellowship which will support a postdoctoral fellow trained in basic bench research to train in computational science, or a postdoctoral fellow in computational science to train in an immunology research lab to learn basic immunological principles and laboratory techniques. Reciprocal 6-month exchanges between labs will also be considered.

APPLICATIONS OPEN	JUNE 1
APPLICATIONS CLOSE	SEPTEMBER 1

Eligibility

One of the collaborating PIs must be an AAI member in good standing. If the PI is a research immunologist, he/she must be independent. Applicants may request salary support for a maximum of one postdoctoral fellow for one year, or two postdocs for six months each.

Trainees must be in years 1–5 of postdoctoral training in the physical/mathematical/computational sciences, immunology, or related fields. Postdoctoral fellows who have completed five years of training and transitioned into a second postdoctoral position will be considered on a case-by-case basis.

Review Process

Award consideration is based on a combination of the qualifications of the applicant, the merit of the PI's proposed project, potential of the trainee, and the quality of the training environment.

For more information or to apply: www.aai.org/Intersect
Direct inquiries to fellowships@aai.org